



**\*NOTE:**  
 APPROXIMATELY 129 TREES ARE GOING TO BE REMOVED AND THE MINIMUM DIAMETER SIZE IS 0.1M.  
 36 TREES ARE BEING REPLANTED ALONG WITH THE DEVELOPMENT.

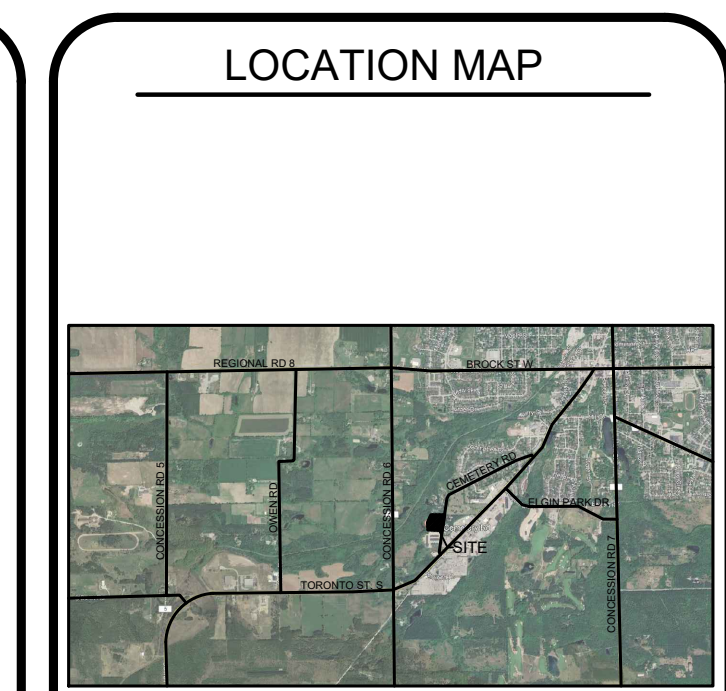
TREE PROTECTION FENCE OF GROUP 52B AND 51B TO BE ALIGNED WITH THE LIMIT OF DISTURBANCE.  
 MINIMUM TREE PROTECTION ZONE TO BE CONSISTENT WITH RETAINED TREE DRIPLINE AS PER DETAIL ON L-TP2.

ANY GRADING OR EXCAVATION WORK TO BE DONE WITHIN THE TPZ IS TO BE DONE BY HAND OR HYDROVAC TO LIMIT POTENTIAL DAMAGE TO THE EXISTING ROOTS SYSTEM.

TIMING FOR TREE AND VEGETATION REMOVAL TO ADHERE TO THE RECOMMENDATIONS OF THE APPROVED NATURAL HERITAGE EVALUATION REPORT. REMOVALS SHOULD BE DONE OUTSIDE OF THE PEAK BREEDING BIRD SEASON (APRIL 15TH - AUGUST 15TH) AS PER ENVIRONMENTAL AND CLIMATE CHANGE CANADA'S GUIDELINES.

**LEGEND**

- 123 TREES TO BE REMOVED
- 123 TREES TO BE RETAINED
- TREE PRESERVATION FENCE
- 123 TREES TO BE PARTIALLY REMOVED



**GENERAL NOTES**

THE LOCATION OF PROPERTY LINES, ELEVATIONS AND FACILITIES ON THIS PLAN WERE DRAWN ON THE BASIS OF A DIGITAL SITE PLAN OR SURVEY DATA PROVIDED BY OTHER CONSULTANTS.

IT IS THE RESPONSIBILITY OF THE CLIENT AND HIS CONTRACTORS TO CONFIRM THE ACCURACY OF THE SETBACKS, LOCATIONS AND GRADES ETC. ANY VARIATIONS BETWEEN EXISTING CONDITIONS AND THIS PLAN SHOULD BE ADJUSTED ON SITE AND REPORTED TO THE CONSULTING LANDSCAPE ARCHITECT TO DETERMINE THE IMPACT OF THE VARIATIONS ON THE SUITABILITY OF THE PROPOSED DEVELOPMENT.

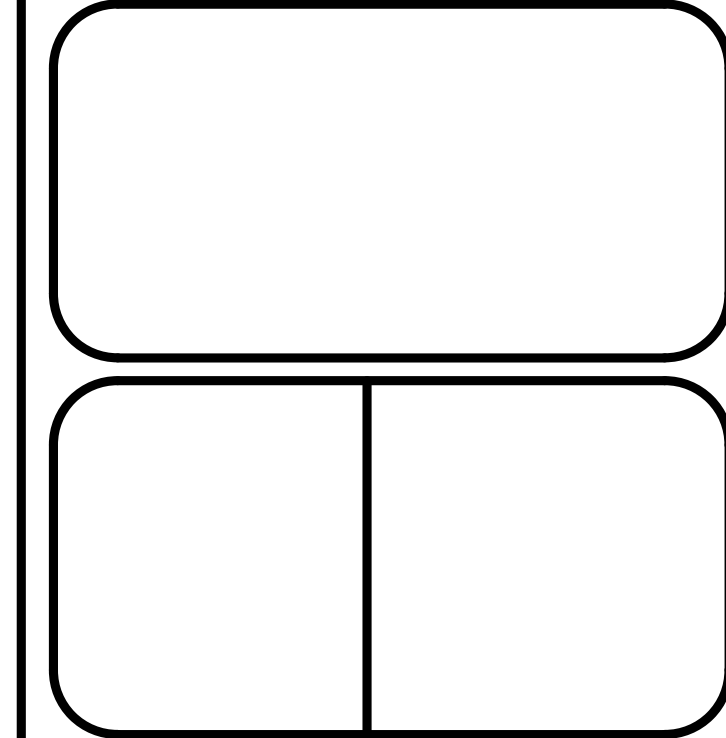
CONSTRUCTION MUST CONFORM TO ALL CODES AND REQUIREMENTS OF AUTHORITIES HAVING JURISDICTION.

**REVISIONS**

NO.	DATE	NOTES	BY
3	2024-05-06	Update Plan	CT
2	2023-09-13	TREE PRESERVATION	YW
1	2022-02-17	Boulevard Plan	CT

THESE LANDSCAPE DRAWINGS SHALL ONLY BE USED FOR THE PURPOSES INDICATED BELOW AS NOTED AND WHEN SIGNED BY THE CONSULTING LANDSCAPE ARCHITECT.

	CONCEPTUAL		TENDER
	PRELIMINARY		CONTRACT
	SITE PLAN		CONSTRUCTION
	PERMIT		AS-BUILT



THESE DRAWINGS ARE INSTRUMENTS OF SERVICE AND THE LANDSCAPE ARCHITECT RETAINS OWNERSHIP OF THESE DRAWINGS. THEY ARE FOR SITE PLAN APPROVAL ONLY AND MAY REQUIRE FURTHER CONSTRUCTION DETAILING AND COORDINATION WITH OTHER ASSOCIATED PROFESSIONAL DESIGN SERVICES BEFORE ACTUAL TENDER AND CONSTRUCTION COMMENCES. DIMENSIONS ARE TO BE VERIFIED PRIOR TO CONSTRUCTION. DRAWINGS ARE NOT TO BE SCALED. IT IS ADVISED THAT CONTRACTORS CONTACT THE LANDSCAPE ARCHITECT PRIOR TO CONSTRUCTION TO ENSURE THE USE OF THE LATEST REVISED DRAWINGS. THE LANDSCAPE ARCHITECT IS NOT LIABLE FOR ERRORS OR OMISSIONS ARISING FROM UTILIZATION OF THESE PLANS BEFORE THE SAID DRAWINGS ARE SCALED, SIGNED AND DATED. AND THE LANDSCAPE ARCHITECT IS CONTRACTED TO PROVIDE CONSTRUCTION ADMINISTRATION AND CERTIFICATION SERVICES BY THE OWNER. ALL APPARENT DISCREPANCIES ARE TO BE REPORTED IN WRITING TO THE LANDSCAPE ARCHITECT BEFORE CONSTRUCTION COMMENCES.

PROJECT: 150 CEMETERY RD. UXBURGE, ON

DRAWING: TREE PRESERVATION

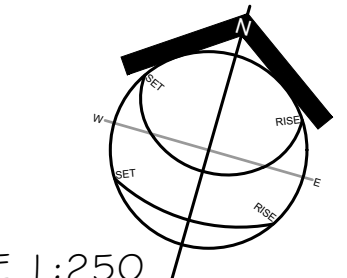
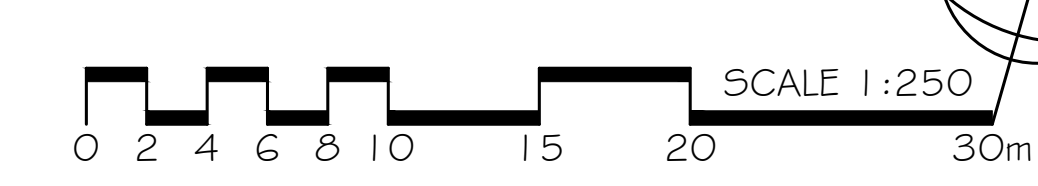
DRAWN BY: KL SCALE: 1:250

CHECKED BY: HJK DATE: 2021-08-27

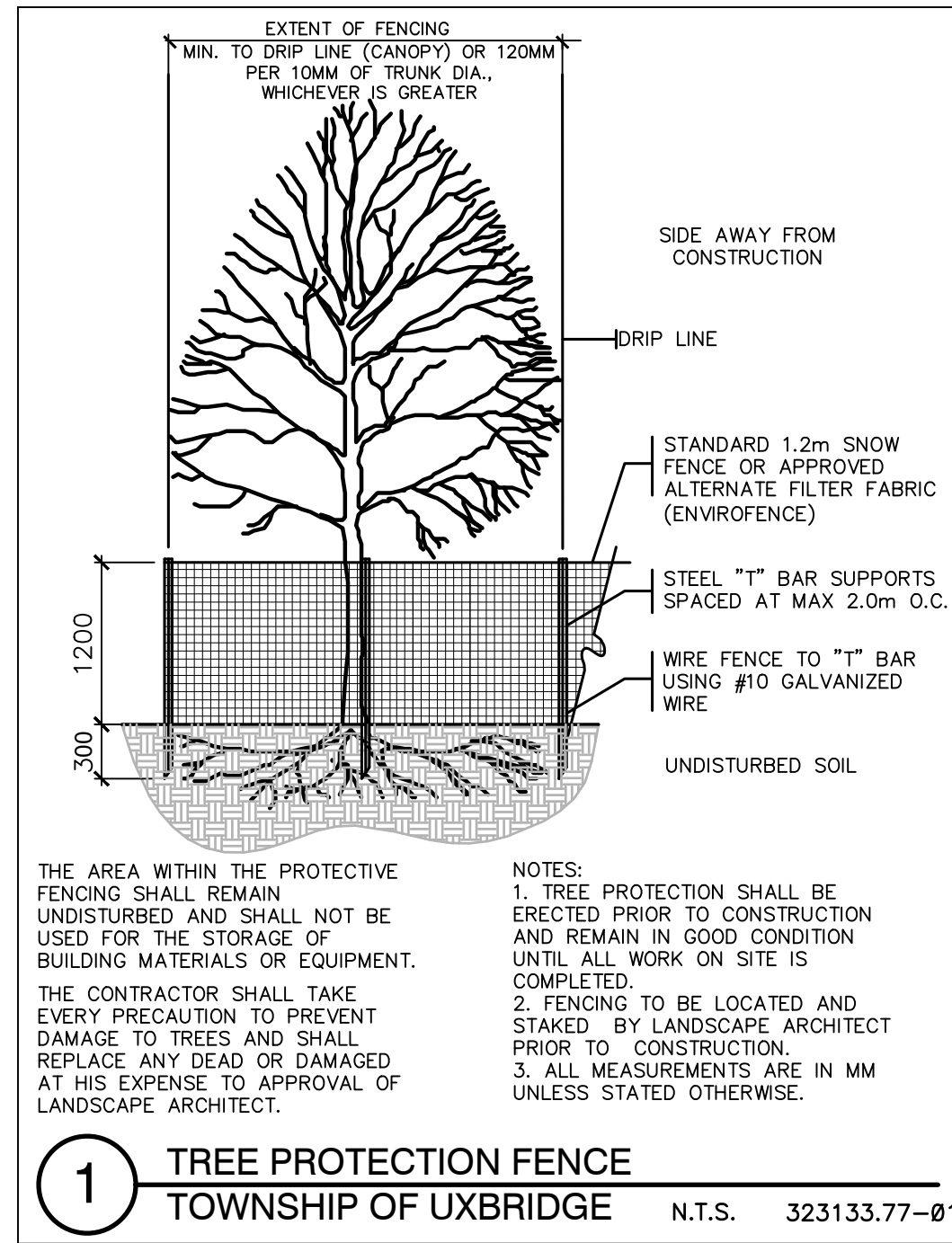
JOB NO.: 2021-082

File #2021-082

**L-TP1**  
DRAWING 1 of 5







**Tree Inventory**

Project: 150 Cemetery Road

HKA Job #: 2021-082

Date: Aug.25.2023

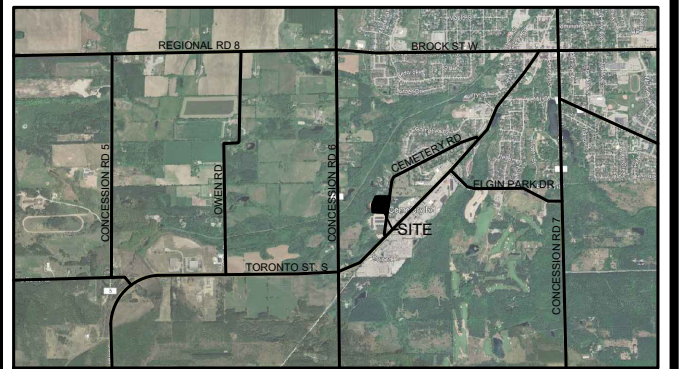
Conditions:

Inventory Done By: KL

CODES		
DBH	Diameter at breast height	(mm)
SPR	Spread	(m)
HT	Height	(m)
TI	Trunk Integrity	(G,F,P)
CS	Crown Structure	(G,F,P)
CV	Crown Vigor	(G,F,P)
CDB	Crown Die Black	(%)
SPP	Species Potential	(L,M,H)
SIP	Site Potential	(L,M,H)
PHY	Physical Condition	(text)
~ = Estimate (L)=low (M)=moderate (H)=high (G) = Good, (F)		

Tree Tag #	Common Name	Scientific Name	DBH	SP	HT	TI	CS	CV	CDB	SPP	SIP	PHY	Notes	Recommendation (REMOVE/RETAIN)
47	Common spruce	Picea abies	42	9	16	F	F	F	10%	#NA				REMOVE FOR DEVELOPMENT
48	Black pine	Pinus nigra	37	6	15	F	F	F	15%	#NA		Broken branches		REMOVE FOR DEVELOPMENT
48B	Black pine	Pinus nigra	26	4	12	F	P	F-P	20%	#NA		Broken branches		REMOVE FOR DEVELOPMENT
48C	Black pine	Pinus nigra	17	2	12	F	P	F-P	20%	#NA		Vine along trunk		REMOVE FOR DEVELOPMENT
49	Common spruce	Picea abies	47,48	7	20	F	F	F	5%	#NA		2 leaders. Some understory. Maintenance to lower branches		REMOVE FOR DEVELOPMENT
50	Manitoba maple	Acer negundo	40,100	14	15	F	F	F	10%	L		Rhamnus. Maintenance to branches. Broken branches. Spalding bark, Wide spreading canopies. Socking. Torsion. Hollow portion of trunk		REMOVE FOR DEVELOPMENT
50B	Common spruce, Silver maple, Black pine, White pine, Norway maple, Buckthorn	Picea abies, Acer saccharinum, Pinus nigra, Pinus strobus, Acer platanoides, Rhamnus cathartica	15-43	3 to 10	10 to 18	F	F	F-P	15%	#NA		12+ trees in group. Thick rhamnus understory. Broken branches, Competing canopies. Naturally regenerating		REMOVE FOR DEVELOPMENT
51	Common spruce	Picea abies	54	9	17	F	G	F	10%	#NA		Low growing spruce. Shrub adjacent. Snag adjacent		REMOVE FOR DEVELOPMENT
51B	Trembling aspen, Malus spp, White pine, American beech, Rhamnus, Norway maple	Populus tremuloides, Malus spp, Pinus strobus, Fagus grandifolia, Rhamnus, Acer platanoides	8 to 30	3 to 8	9 to 20	F	F	F	15%	#NA		Stand of primary Trembling aspen. Naturally regenerating. 45+ trees. Standing snags through area		PARTIALLY REMOVED
51C	Northern red oak	Quercus rubra	48	12	20	G	F	F	15%	#NA		Surrounded by snags/naturally regenerating species. Some spalding bark/Broken branches		REMOVE FOR DEVELOPMENT
51D	Poplar	Populus spp.	53	8	20	F	F	F	20%	L		Lean to east. Rhamnus understory. Some broken branches. On slope		RETAIN & PROTECT
52	Common spruce, White pine	Picea abies, Pinus strobus	20 to 30	5 to 7	11 to 15	F	F	F	20%	#NA		4 trees		REMOVE FOR DEVELOPMENT
52B	Common spruce	Picea abies	18 to 38	3 to 7	12 to 18	F	F	F-P	15%	#NA		60+ trees. Scarce interior canopies. Along P.L. Some buckthorn/Cedar understory		PARTIALLY REMOVED
53	Common spruce	Picea abies	32 to 42	3 to 6	18-20	G	F	F	10%	#NA		7 trees. Some broken branches/maintenance to lower branches		REMOVE FOR DEVELOPMENT
53B	Common spruce, White pine, Norway maple, Red oak	Picea abies, Pinus strobus, Acer platanoides, Quercus rubra	15 to 35	4 to 8	10 to 18	F	F-P	F-P	20%	#NA		Thick understory of Rhamnus/naturally regenerating species. 23+ trees in group. Snags adjacent		REMOVE FOR DEVELOPMENT
53C	Cedar, White pine	Cedrus, Pinus strobus	12 to 42	4 to 8	8 to 17	F	F	F	10%	#NA		Dense grouping of Cedar. Buckthorn. Shed adjacent. 25+ trees. Scarce interior canopies		REMOVE FOR DEVELOPMENT
54	White birch	Betula papyrifera	36,35,33,23	13	18	F	F-P	F	20%	#NA		Spalding bark/Broken branches. 4 leader		REMOVE FOR DEVELOPMENT
54B	Cedar, White pine, White birch, Norway maple	Cedrus, Pinus strobus, Betula papyrifera, Acer platanoides	8 to 28	2 to 9	8 to 13	F	F	F	15%	#NA		Rhamnus. 50+ stems		REMOVE FOR DEVELOPMENT
54C	Poplar	Populus spp.	57	11	20	F	F	F	10%	L		Undergrowth of Cedar/Rhamnus		REMOVE FOR DEVELOPMENT
55	Silver maple	Acer saccharinum	86	13	19	F	F	F-P	25%	M		Spalding bark. Maintenance to leader		RETAIN & PROTECT
56	Honey locust	Gleditsia triacanthos	49	13	13	F-P	F-P	F	20%	M		Leader broken. Broken branches		REMOVE FOR DEVELOPMENT
57	Crimson King Norway maple	Acer platanoides 'Crimson King'	13,34	7	9	F-P	G	G	5%	#NA		Suckering at base. Peeling bark		REMOVE FOR DEVELOPMENT
58	Birch	Betula	20, 29, 20, 24	6	11	F	F	F	5%	#NA		Multileader		REMOVE FOR DEVELOPMENT
59	Common spruce	Picea abies	25	5	10	G	F	F	5%	#NA				REMOVE FOR DEVELOPMENT
55B	Col. Blue spruce	Picea pungens	30	5	9	G	G	G	5%	#NA				REMOVE FOR DEVELOPMENT

**LOCATION MAP**



**GENERAL NOTES**

THE LOCATION OF PROPERTY LINES, ELEVATIONS AND FACILITIES ON THIS PLAN WERE DRAWN ON THE BASIS OF A DIGITAL SITE PLAN OR SURVEY DATA PROVIDED BY OTHER CONSULTANTS.

IT IS THE RESPONSIBILITY OF THE CLIENT AND HIS CONTRACTORS TO CONFIRM THE ACCURACY OF THE SETBACKS, LOCATIONS AND GRADES ETC. ANY VARIATIONS BETWEEN EXISTING CONDITIONS AND THIS PLAN SHOULD BE ADJUSTED ON SITE AND REPORTED TO THE CONSULTING LANDSCAPE ARCHITECT TO DETERMINE THE IMPACT OF THE VARIATIONS ON THE SUITABILITY OF THE PROPOSED DEVELOPMENT.

CONSTRUCTION MUST CONFORM TO ALL CODES AND REQUIREMENTS OF AUTHORITIES HAVING JURISDICTION.

**REVISIONS**

NO.	DATE	NOTES	BY
3	2024-05-06	Update Plan	CT
2	2023-09-13	TREE PRESERVATION	YW
1	2022-02-17	Boulevard Plan	CT

THESE LANDSCAPE DRAWINGS SHALL ONLY BE USED FOR THE PURPOSES INDICATED BELOW AS NOTED AND WHEN SIGNED BY THE CONSULTING LANDSCAPE ARCHITECT.

CONCEPTUAL  TENDER  
 PRELIMINARY  CONTRACT  
 SITE PLAN  CONSTRUCTION  
 PERMIT  AS-BUILT



THESE DRAWINGS ARE INSTRUMENTS OF SERVICE AND THE LANDSCAPE ARCHITECT RETAINS OWNERSHIP OF THESE DRAWINGS. THEY ARE FOR SITE PLAN APPROVAL ONLY AND MAY REQUIRE FURTHER CONSTRUCTION DETAILING AND COORDINATION WITH OTHER ASSOCIATED PROFESSIONAL DESIGN SERVICES BEFORE ACTUAL TENDER AND CONSTRUCTION COMMENCES. DIMENSIONS ARE TO BE VERIFIED PRIOR TO CONSTRUCTION. DRAWINGS ARE NOT TO BE SCALED. IT IS ADVISED THAT CONTRACTORS CONTACT THE LANDSCAPE ARCHITECT PRIOR TO CONSTRUCTION TO ENSURE THE USE OF THE LATEST REVISED DRAWINGS. THE LANDSCAPE ARCHITECT IS NOT LIABLE FOR ERRORS OR OMISSIONS ARISING FROM UTILIZATION OF THESE PLANS BEFORE THE SAID DRAWINGS ARE SCALED, SIGNED AND DATED, AND THE LANDSCAPE ARCHITECT IS CONTRACTED TO PROVIDE CONSTRUCTION ADMINISTRATION AND CERTIFICATION SERVICES BY THE OWNER. ALL APPARENT DISCREPANCIES ARE TO BE REPORTED IN WRITING TO THE LANDSCAPE ARCHITECT BEFORE CONSTRUCTION COMMENCES.

PROJECT: **150 CEMETERY RD. UXBRIDGE, ON**

DRAWING: **TREE PRESERVATION**

DRAWN BY: KL SCALE: 1:250

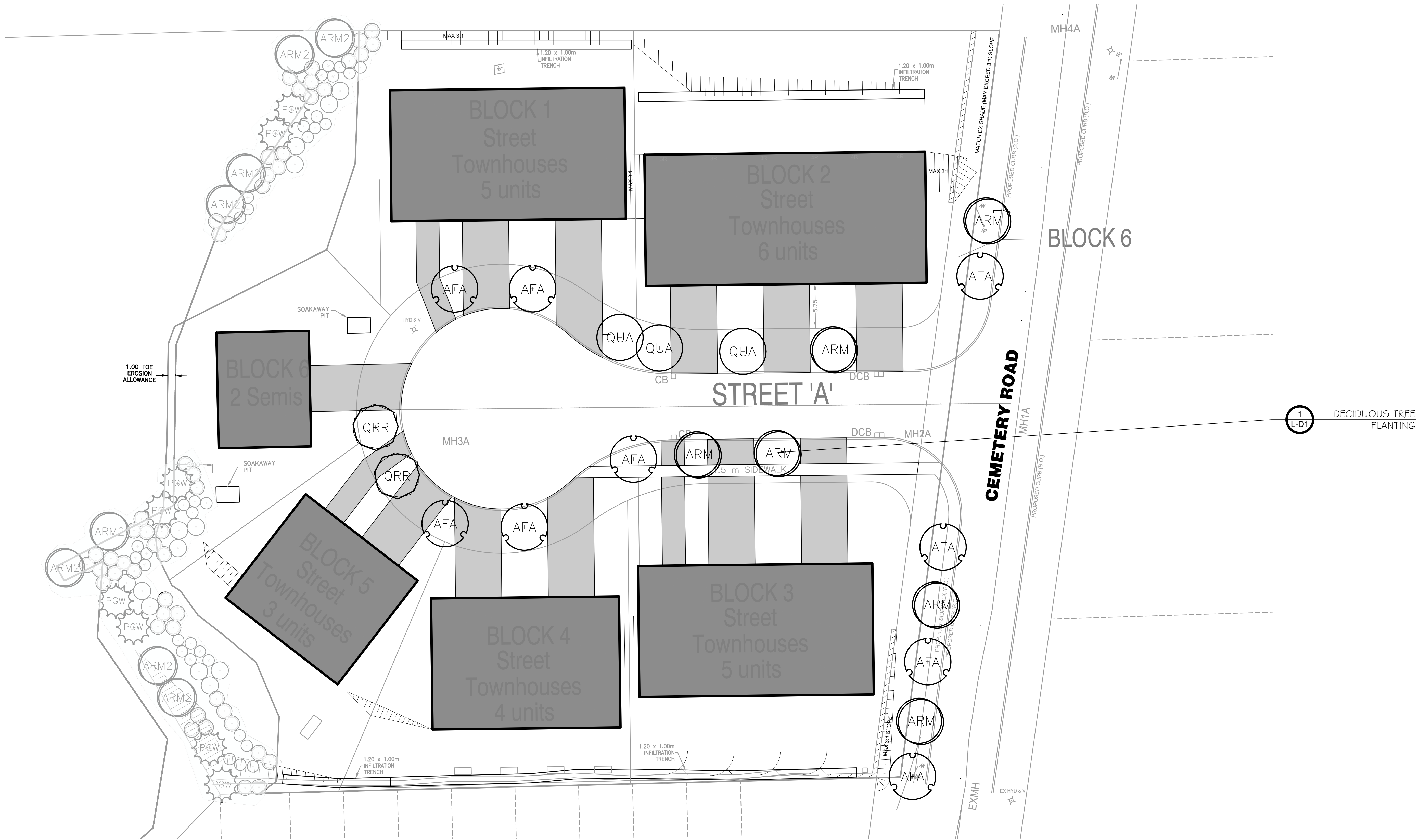
CHECKED BY: HJK DATE: 2021-08-27

JOB NO.: 2021-082

**L-TP2**  
DRAWING 2 of 5

File #2021-082

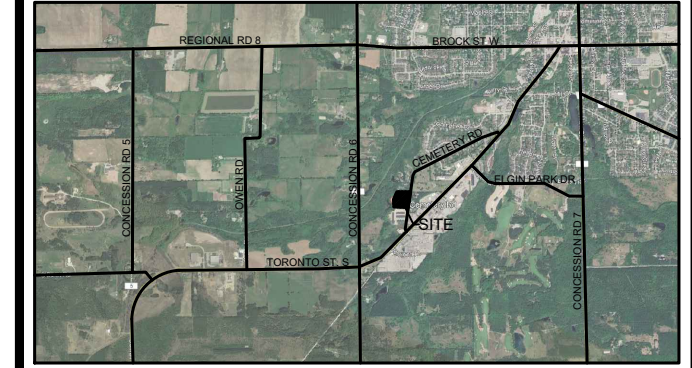




**PLANT SCHEDULE BOULEVARD PLANTING**

TREES	QTY	BOTANICAL NAME	COMMON NAME	SIZE	CONT	REMARKS
AFA	9	<i>Acer freemanii</i> 'Autumn Blaze'	Autumn Blaze Maple	60mm Cal.	W.B.	
ARM	6	<i>Acer rubrum</i>	Red Maple	60mm Cal.	W.B.	spring dug
QUA	3	<i>Quercus alba</i>	White Oak	50mm Cal.	W.B.	
QRR	2	<i>Quercus rubra</i>	Red Oak	60mm Cal.	W.B.	

**LOCATION MAP**



**GENERAL NOTES**

THE LOCATION OF PROPERTY LINES, ELEVATIONS AND FACILITIES ON THIS PLAN WERE DRAWN ON THE BASIS OF A DIGITAL SITE PLAN OR SURVEY DATA PROVIDED BY OTHER CONSULTANTS.

IT IS THE RESPONSIBILITY OF THE CLIENT AND HIS CONTRACTORS TO CONFIRM THE ACCURACY OF THE SETBACKS, LOCATIONS AND GRADES ETC. ANY VARIATIONS BETWEEN EXISTING CONDITIONS AND THIS PLAN SHOULD BE ADJUSTED ON SITE AND REPORTED TO THE CONSULTING LANDSCAPE ARCHITECT TO DETERMINE THE IMPACT OF THE VARIATIONS ON THE SUITABILITY OF THE PROPOSED DEVELOPMENT.

CONSTRUCTION MUST CONFORM TO ALL CODES AND REQUIREMENTS OF AUTHORITIES HAVING JURISDICTION.

**REVISIONS**

NO.	DATE	NOTES	BY
3	2024-05-06	Update Plan	CT
2	2023-09-13	TREE PRESERVATION	YW
1	2022-02-17	Boulevard Plan	CT

THESE LANDSCAPE DRAWINGS SHALL ONLY BE USED FOR THE PURPOSES INDICATED BELOW AS NOTED AND WHEN SIGNED BY THE CONSULTING LANDSCAPE ARCHITECT.

- CONCEPTUAL
- PRELIMINARY
- SITE PLAN
- PERMIT
- TENDER
- CONTRACT
- CONSTRUCTION
- AS-BUILT



THESE DRAWINGS ARE INSTRUMENTS OF SERVICE AND THE LANDSCAPE ARCHITECT RETAINS OWNERSHIP OF THESE DRAWINGS. THEY ARE FOR SITE PLAN APPROVAL ONLY AND MAY REQUIRE FURTHER CONSTRUCTION DETAILING AND COORDINATION WITH OTHER ASSOCIATED PROFESSIONAL DESIGN SERVICES BEFORE ACTUAL TENDER AND CONSTRUCTION COMMENCES. DIMENSIONS ARE TO BE VERIFIED PRIOR TO CONSTRUCTION. DRAWINGS ARE NOT TO BE SCALED. IT IS ADVISED THAT CONTRACTORS CONTACT THE LANDSCAPE ARCHITECT PRIOR TO CONSTRUCTION TO ENSURE THE USE OF THE LATEST REVISED DRAWINGS. THE LANDSCAPE ARCHITECT IS NOT LIABLE FOR ERRORS OR OMISSIONS ARISING FROM UTILIZATION OF THESE PLANS BEFORE THE SAID DRAWINGS ARE SCALED, SIGNED AND DATED, AND THE LANDSCAPE ARCHITECT IS CONTRACTED TO PROVIDE CONSTRUCTION ADMINISTRATION AND CERTIFICATION SERVICES BY THE OWNER. ALL APPARENT DISCREPANCIES ARE TO BE REPORTED IN WRITING TO THE LANDSCAPE ARCHITECT BEFORE CONSTRUCTION COMMENCES.

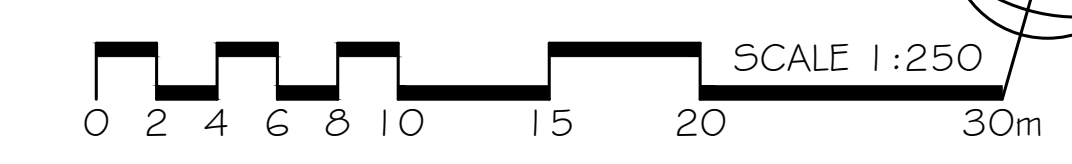
PROJECT: **150 CEMETERY RD. UXBURGE, ON**

DRAWING: **BOULEVARD PLANTING**

DRAWN BY: KL  
 CHECKED BY: HJK  
 JOB NO.: 2021-082

SCALE: SCALE  
 DATE: 2021-08-27

**L1**  
 DRAWING  
 3 of 5





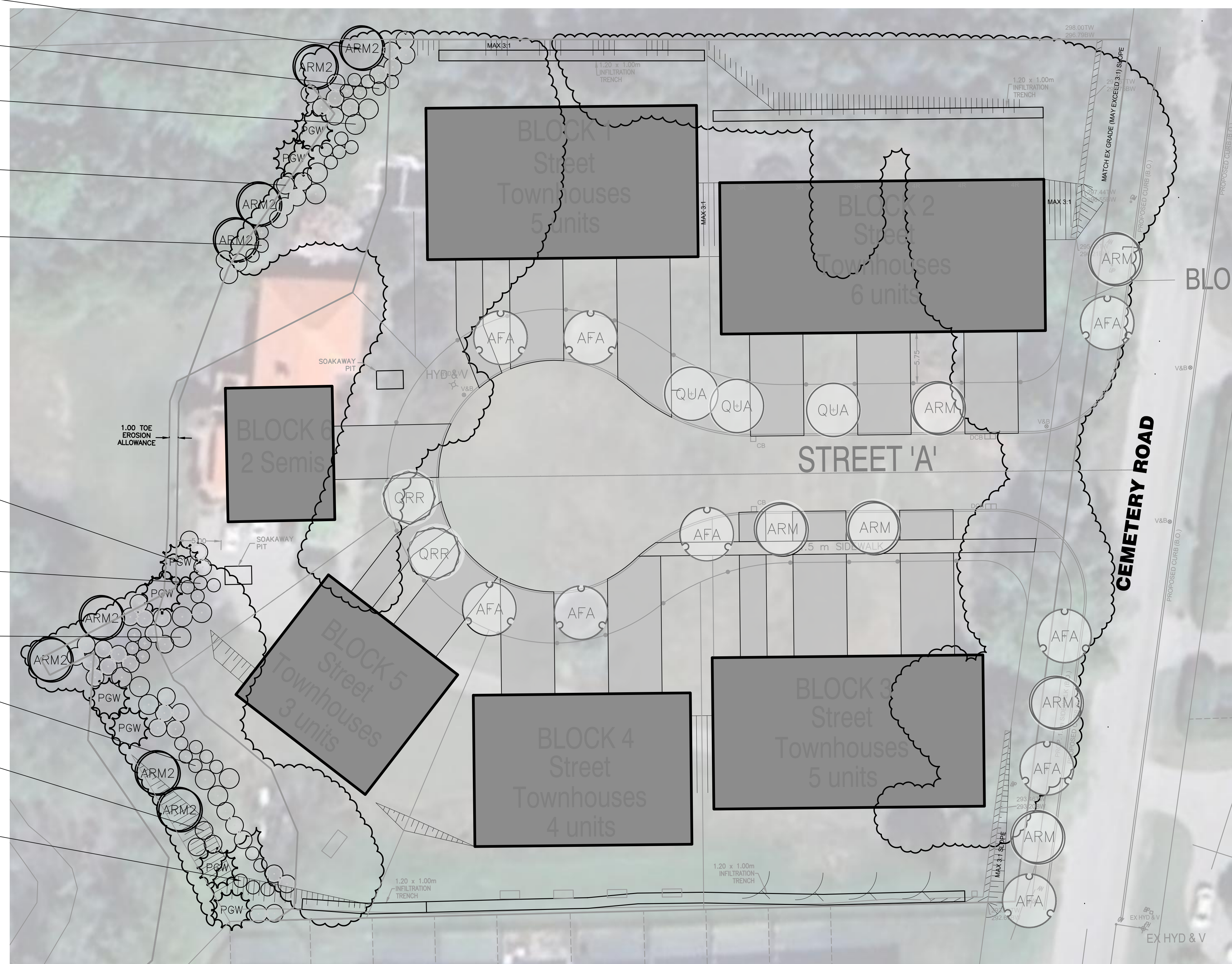
DECIDUOUS TREE PLANTING  
1 L-D1

- (8) ROS PAL  
30cm Ht.
- (5) VIB LEN  
50cm Ht.
- (19) THU OCC  
150cm Ht.
- (6) RIB AME  
50cm Ht.

CONIFEROUS TREE PLANTING  
3 L-D1

- (12) ROS PAL  
30cm Ht.
- (9) VIB LEN  
50cm Ht.
- (7) RIB AME  
50cm Ht.
- (32) THU OCC  
150cm Ht.

STANDARD SHRUB PLANTING  
2 L-D1



**LEGEND**

EXISTING VEGETATION TO BE REMOVED

**LOCATION MAP**

**GENERAL NOTES**

THE LOCATION OF PROPERTY LINES, ELEVATIONS AND FACILITIES ON THIS PLAN WERE DRAWN ON THE BASIS OF A DIGITAL SITE PLAN OR SURVEY DATA PROVIDED BY OTHER CONSULTANTS.

IT IS THE RESPONSIBILITY OF THE CLIENT AND HIS CONTRACTORS TO CONFIRM THE ACCURACY OF THE SETBACKS, LOCATIONS AND GRADES ETC. ANY VARIATIONS BETWEEN EXISTING CONDITIONS AND THIS PLAN SHOULD BE ADJUSTED ON SITE AND REPORTED TO THE CONSULTING LANDSCAPE ARCHITECT TO DETERMINE THE IMPACT OF THE VARIATIONS ON THE SUITABILITY OF THE PROPOSED DEVELOPMENT.

CONSTRUCTION MUST CONFORM TO ALL CODES AND REQUIREMENTS OF AUTHORITIES HAVING JURISDICTION.

**REVISIONS**

NO.	DATE	NOTES	BY
3	2024-05-06	Update Plan	CT
2	2023-09-13	TREE PRESERVATION	YW
1	2022-02-17	Boulevard Plan	CT

THESE LANDSCAPE DRAWINGS SHALL ONLY BE USED FOR THE PURPOSES INDICATED BELOW AS NOTED AND WHEN SIGNED BY THE CONSULTING LANDSCAPE ARCHITECT.

	CONCEPTUAL		TENDER
	PRELIMINARY		CONTRACT
	SITE PLAN		CONSTRUCTION
	PERMIT		AS-BUILT

**PLANT SCHEDULE EDGE MANAGEMENT**

	CODE	QTY	BOTANICAL NAME	COMMON NAME	SIZE	CONT	REMARKS
<b>TREES</b>	ARM2	8	Acer rubrum	Red Maple	40mm Cal.	W.B.	spring dug
	PGW	8	Picea glauca	White Spruce	200cm Ht.	W.B.	
<b>SYMBOL</b>	CODE	QTY	BOTANICAL NAME	COMMON NAME	SIZE	CONT	REMARKS
<b>SHRUBS</b>	RIB AME	13	Ribes americanum	American Black Currant	50cm Ht.	Potted	
	ROS PAL	20	Rosa palustris	Swamp Rose	30cm Ht.	Potted	
	THU OCC	51	Thuja occidentalis	Eastern White Cedar	150cm Ht.	Native Field Cedar	
	VIB LEN	13	Viburnum lentago	Nannyberry	50cm Ht.	Potted	

**SCALE 1:250**

**SCALE 1:250**

**KL**  
Landscape Architects & Consulting Arborists  
230 Westney Road 5 Unit 308, Ajax, ON L1S 7J5  
O (905) 838-5599 | Email: info@kl.ca | Web: www.kl.ca

THESE DRAWINGS ARE INSTRUMENTS OF SERVICE AND THE LANDSCAPE ARCHITECT RETAINS OWNERSHIP OF THESE DRAWINGS. THEY ARE FOR SITE PLAN APPROVAL ONLY AND MAY REQUIRE FURTHER CONSTRUCTION DETAILING AND COORDINATION WITH OTHER ASSOCIATED PROFESSIONAL DESIGN SERVICES BEFORE ACTUAL TENDER AND CONSTRUCTION COMMENCES. DIMENSIONS ARE TO BE VERIFIED PRIOR TO CONSTRUCTION. DRAWINGS ARE NOT TO BE SCALED. IT IS ADVISED THAT CONTRACTORS CONTACT THE LANDSCAPE ARCHITECT PRIOR TO CONSTRUCTION TO ENSURE THE USE OF THE LATEST REVISED DRAWINGS. THE LANDSCAPE ARCHITECT IS NOT LIABLE FOR ERRORS OR OMISSIONS ARISING FROM UTILIZATION OF THESE PLANS BEFORE THE SAID DRAWINGS ARE SCALED, SIGNED AND DATED, AND THE LANDSCAPE ARCHITECT IS CONTRACTED TO PROVIDE CONSTRUCTION ADMINISTRATION AND CERTIFICATION SERVICES BY THE OWNER. ALL APPARENT DISCREPANCIES ARE TO BE REPORTED IN WRITING TO THE LANDSCAPE ARCHITECT BEFORE CONSTRUCTION COMMENCES.

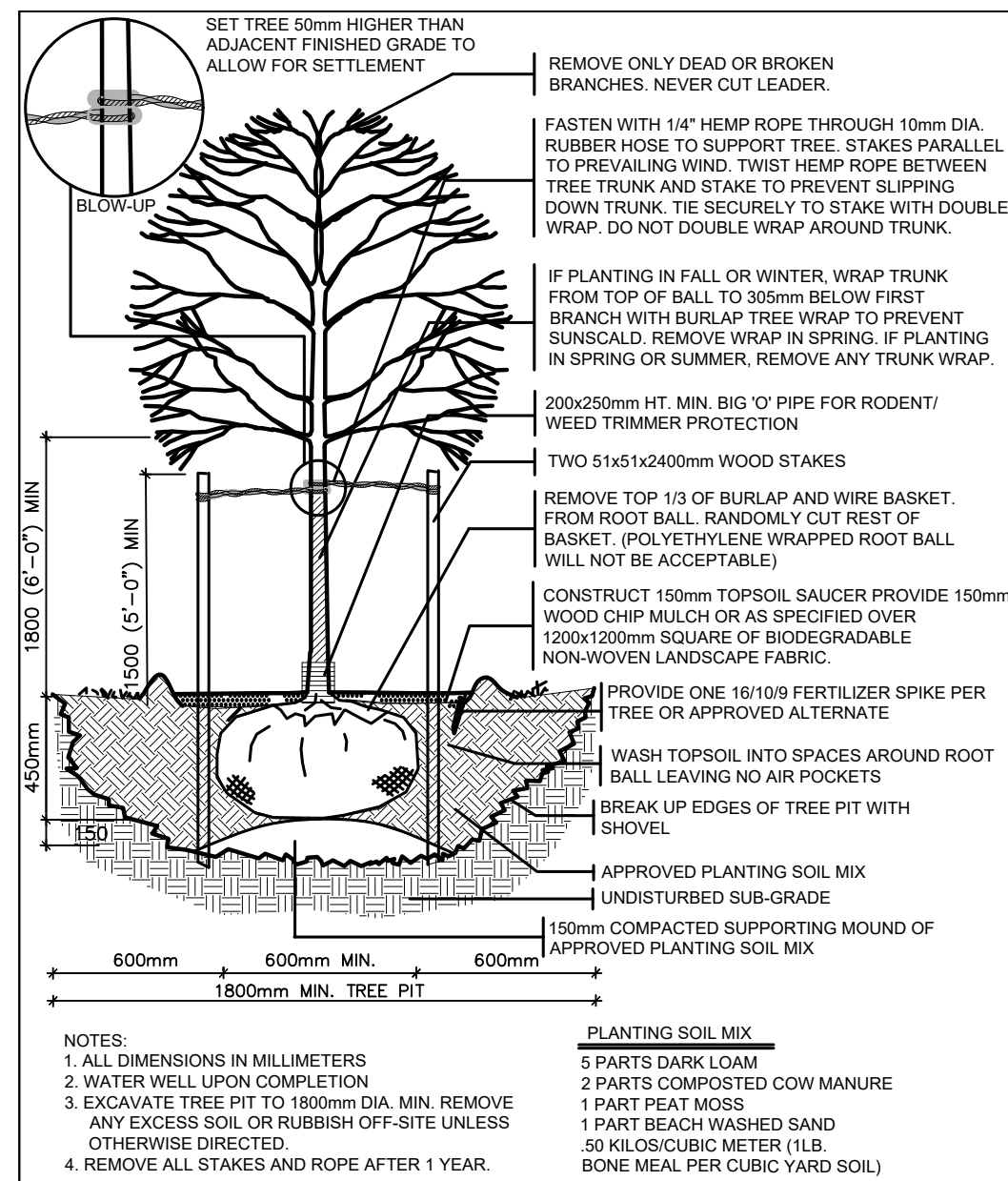
PROJECT: **150 CEMETERY RD. UXBURGE, ON**

DRAWING: **EDGE MANAGEMENT / VEGETATION MANAGEMENT AND ENHANCEMENT**

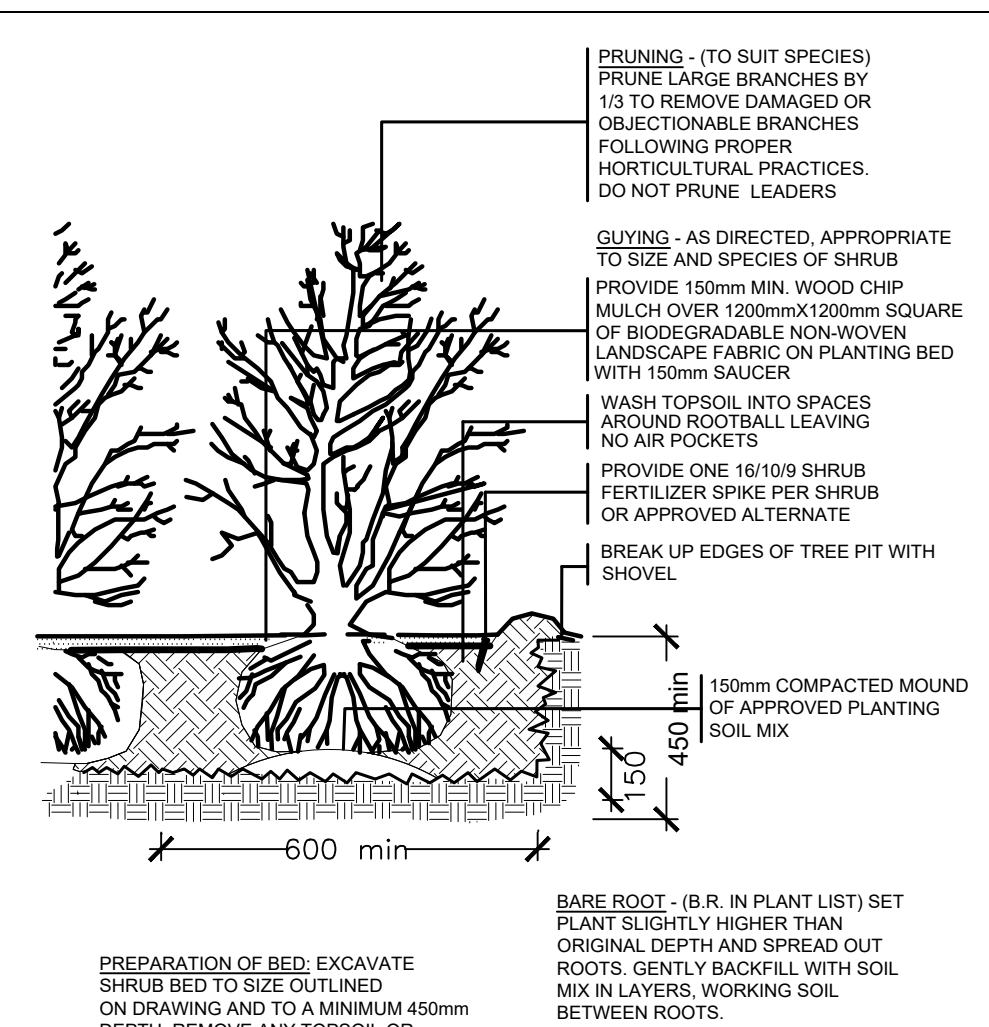
DRAWN BY: KL	SCALE: 1:250	<b>L2</b> DRAWING 4 of 5
CHECKED BY: HJK	DATE: 2021-08-27	
JOB NO.: 2021-082		

File #2021-082

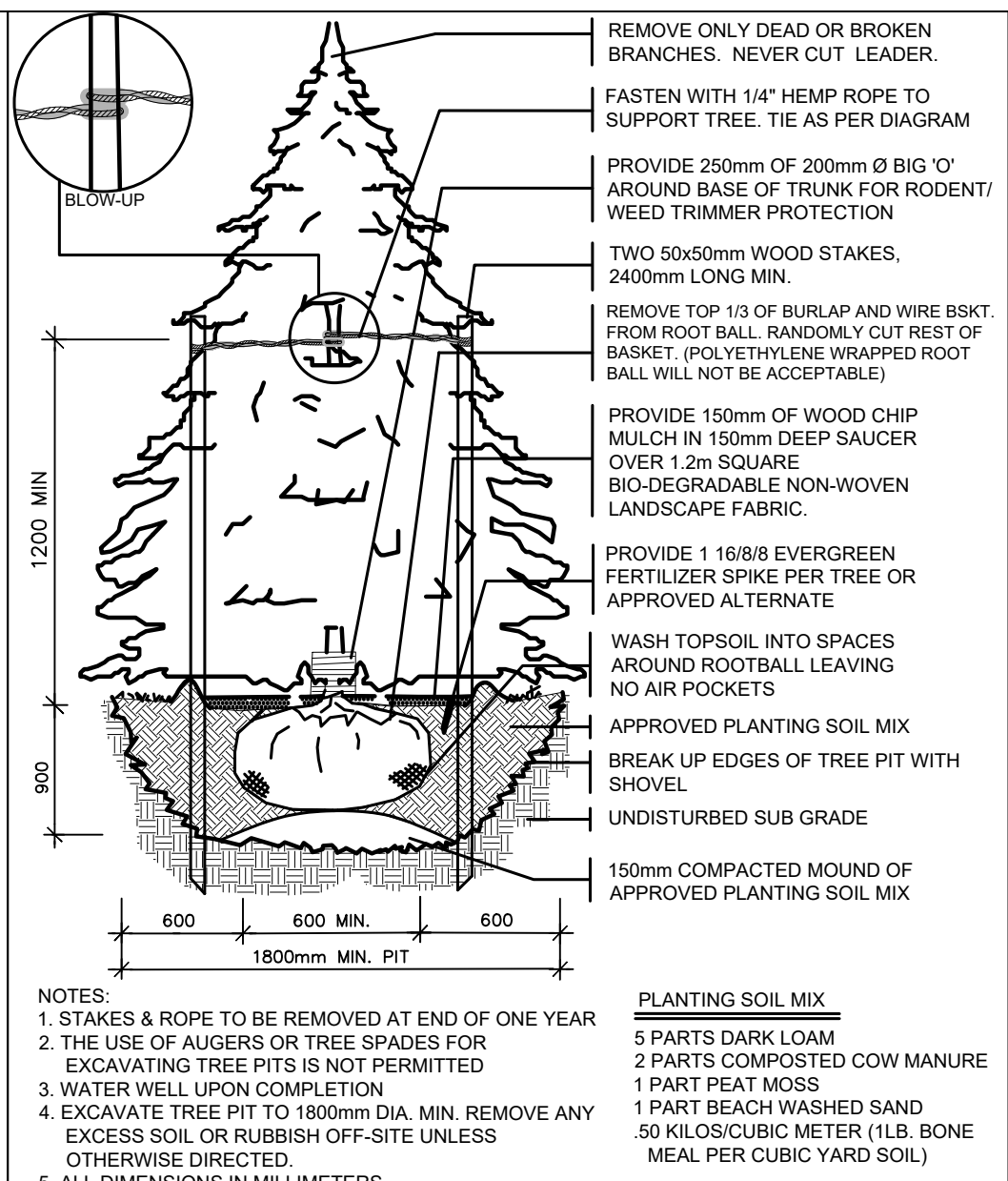




**1 DECIDUOUS TREE PLANTING**  
N.T.S. WOOD STAKE AND HEMP ROPE 329343.01-09

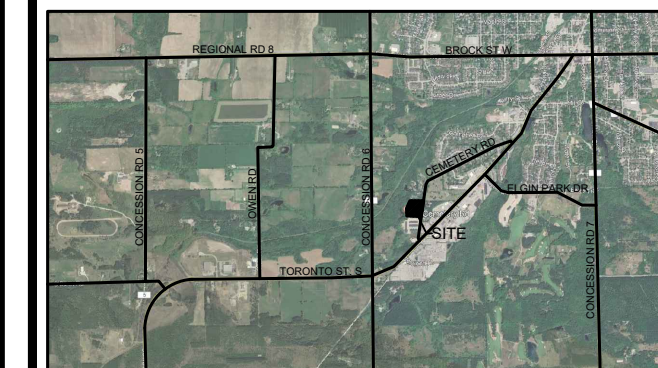


**2 STANDARD SHRUB PLANTING**  
N.T.S. 329333.01-01



**3 CONIFEROUS TREE PLANTING**  
N.T.S. WOOD STAKE AND HEMP ROPE 329344.01-01

LOCATION MAP



GENERAL NOTES

THE LOCATION OF PROPERTY LINES, ELEVATIONS AND FACILITIES ON THIS PLAN WERE DRAWN ON THE BASIS OF A DIGITAL SITE PLAN OR SURVEY DATA PROVIDED BY OTHER CONSULTANTS.

IT IS THE RESPONSIBILITY OF THE CLIENT AND HIS CONTRACTORS TO CONFIRM THE ACCURACY OF THE SETBACKS, LOCATIONS AND GRADES ETC. ANY VARIATIONS BETWEEN EXISTING CONDITIONS AND THIS PLAN SHOULD BE ADVISED ON SITE AND REPORTED TO THE CONSULTING LANDSCAPE ARCHITECT TO DETERMINE THE IMPACT OF THE VARIATIONS ON THE SUITABILITY OF THE PROPOSED DEVELOPMENT.

CONSTRUCTION MUST CONFORM TO ALL CODES AND REQUIREMENTS OF AUTHORITIES HAVING JURISDICTION.

REVISIONS

NO.	DATE	NOTES	BY
3	2024-05-06	Update Plan	CT
2	2023-09-13	TREE PRESERVATION	YW
1	2022-02-17	Boulevard Plan	CT

THESE LANDSCAPE DRAWINGS SHALL ONLY BE USED FOR THE PURPOSES INDICATED BELOW AS NOTED AND WHEN SIGNED BY THE CONSULTING LANDSCAPE ARCHITECT.

<input checked="" type="checkbox"/>	CONCEPTUAL	<input type="checkbox"/>	TENDER
<input type="checkbox"/>	PRELIMINARY	<input type="checkbox"/>	CONTRACT
<input type="checkbox"/>	SITE PLAN	<input type="checkbox"/>	CONSTRUCTION
<input type="checkbox"/>	PERMIT	<input type="checkbox"/>	AS-BUILT



THESE DRAWINGS ARE INSTRUMENTS OF SERVICE AND THE LANDSCAPE ARCHITECT RETAINS OWNERSHIP OF THESE DRAWINGS. THEY ARE FOR SITE PLAN APPROVAL ONLY AND MAY REQUIRE FURTHER CONSTRUCTION DETAILING AND COORDINATION WITH OTHER ASSOCIATED PROFESSIONAL DESIGN SERVICES BEFORE ACTUAL TENDER AND CONSTRUCTION COMMENCES. DIMENSIONS ARE TO BE VERIFIED PRIOR TO CONSTRUCTION. DRAWINGS ARE NOT TO BE SCALED. IT IS ADVISED THAT CONTRACTORS CONTACT THE LANDSCAPE ARCHITECT PRIOR TO CONSTRUCTION TO ENSURE THE USE OF THE LATEST REVISED DRAWINGS. THE LANDSCAPE ARCHITECT IS NOT LIABLE FOR ERRORS OR OMISSIONS ARISING FROM UTILIZATION OF THESE PLANS BEFORE THE SAID DRAWINGS ARE SCALED, SIGNED AND DATED, AND THE LANDSCAPE ARCHITECT IS CONTRACTED TO PROVIDE CONSTRUCTION ADMINISTRATION AND CERTIFICATION SERVICES BY THE OWNER. ALL APPARENT DISCREPANCIES ARE TO BE REPORTED IN WRITING TO THE LANDSCAPE ARCHITECT BEFORE CONSTRUCTION COMMENCES.

PROJECT: 150 CEMETERY RD. UXBRIDGE, ON

DRAWING: DETAILS

DRAWN BY: KL	SCALE: AS SHOWN	<b>L-D1</b> DRAWING 5 of 5
CHECKED BY: HJK	DATE: 2021-08-27	
JOB NO.: 2021-082		