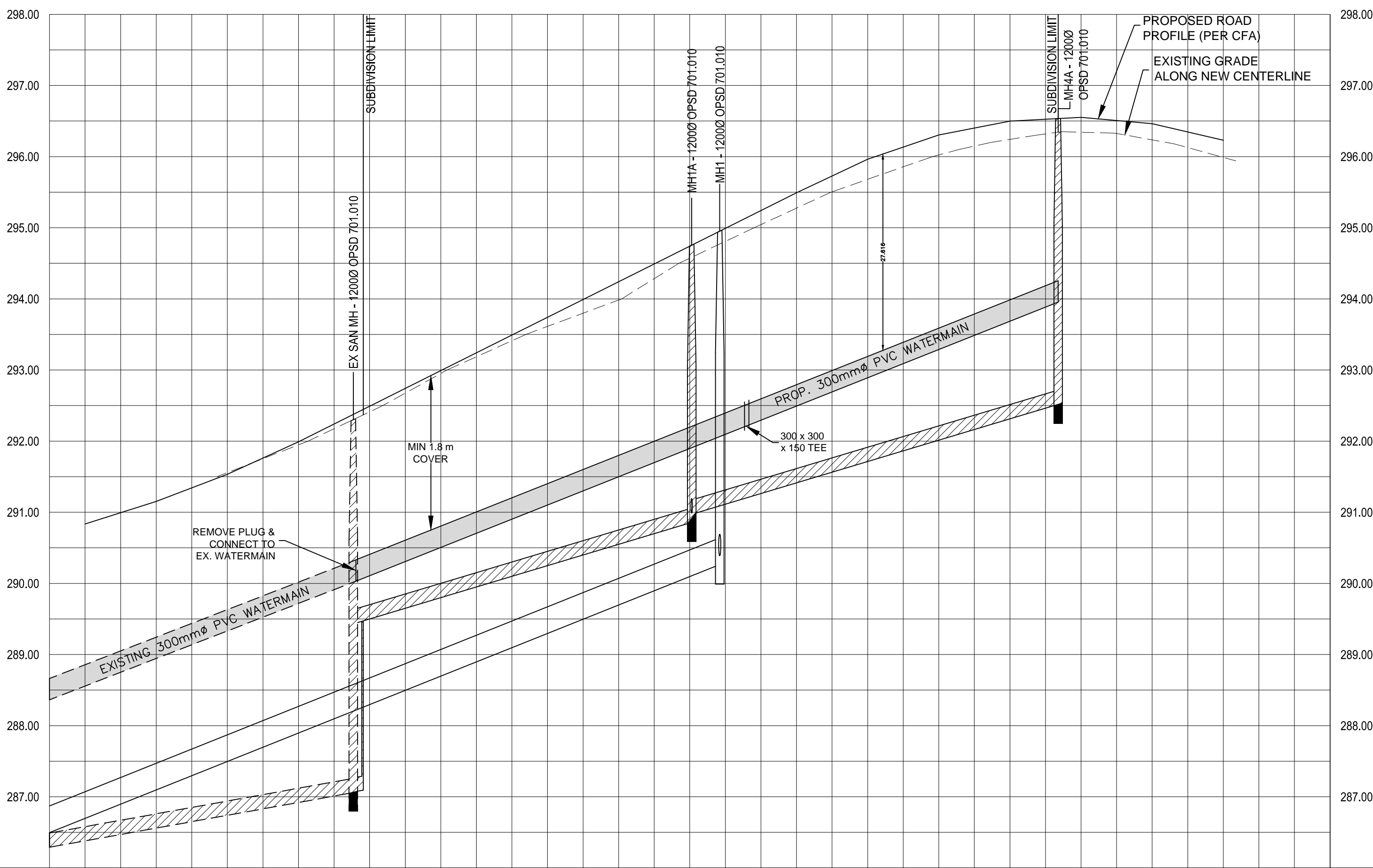
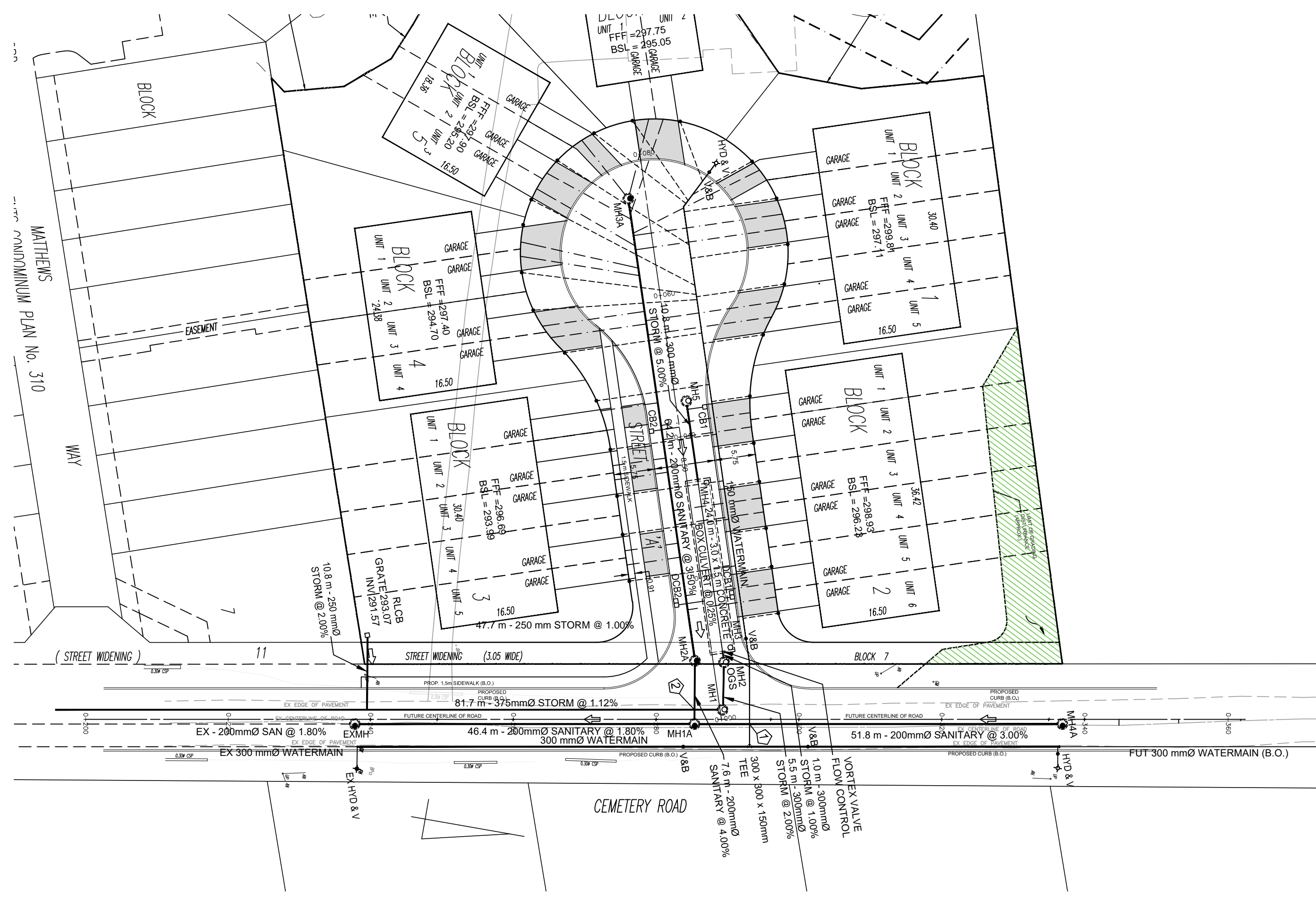
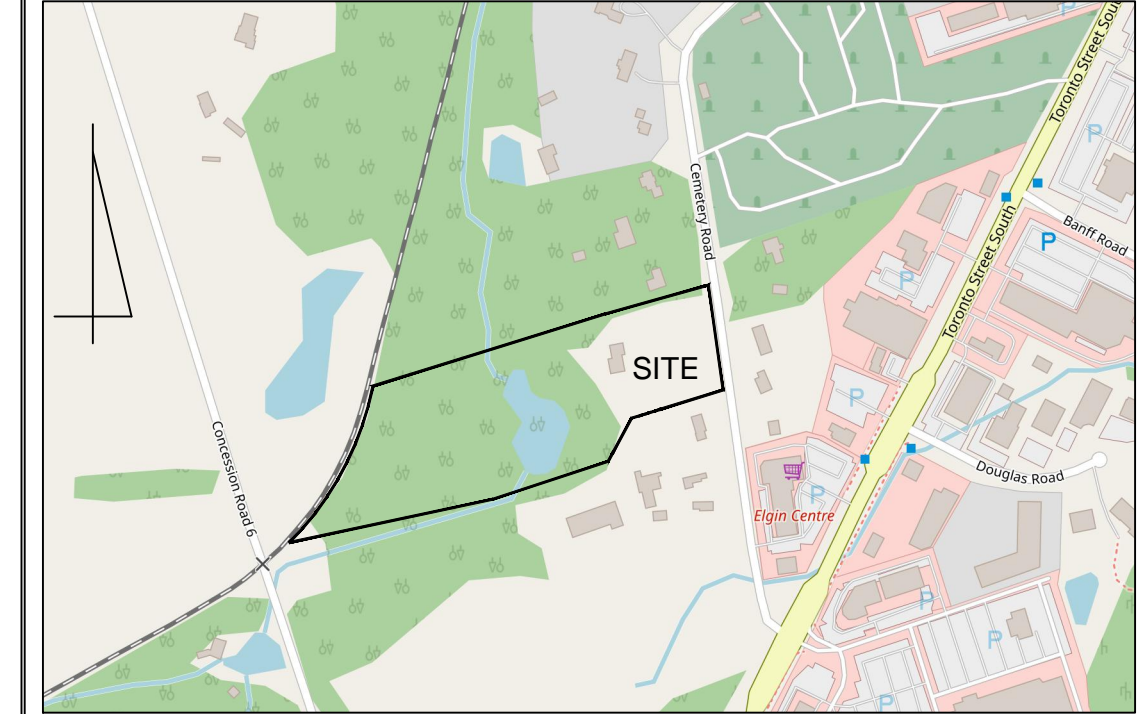


PIPE CROSSING DATA			
	PIPE 1	PIPE 2	CLEARANCE
1	200 ϕ SAN INV = 291.20	150 ϕ WTR TOP = 293.34	1.75 m
2	375 ϕ STM INV = 290.18	200 ϕ SAN INV = 290.89	0.31 m



PIPE	START STATION	END STATION	INVERT	GRADE	LENGTH	INVERT	CHAINAGE
SANITARY SEWER	0+200.00	0+240.00	291.20	1.80%	40.00	290.88	0+240.00
STORM SEWER	0+240.00	0+260.00	290.18	4.00%	20.00	289.98	0+260.00
SANITARY SEWER	0+260.00	0+300.00	290.89	3.00%	40.00	290.59	0+300.00
STORM SEWER	0+300.00	0+340.00	290.18	4.00%	40.00	289.78	0+340.00
SANITARY SEWER	0+340.00	0+380.00	290.89	3.00%	40.00	290.59	0+380.00
STORM SEWER	0+380.00	0+420.00	290.18	4.00%	40.00	289.78	0+420.00
SANITARY SEWER	0+420.00	0+460.00	290.89	3.00%	40.00	290.59	0+460.00
STORM SEWER	0+460.00	0+500.00	290.18	4.00%	40.00	289.78	0+500.00
SANITARY SEWER	0+500.00	0+540.00	290.89	3.00%	40.00	290.59	0+540.00
STORM SEWER	0+540.00	0+580.00	290.18	4.00%	40.00	289.78	0+580.00
SANITARY SEWER	0+580.00	0+620.00	290.89	3.00%	40.00	290.59	0+620.00
STORM SEWER	0+620.00	0+660.00	290.18	4.00%	40.00	289.78	0+660.00
SANITARY SEWER	0+660.00	0+700.00	290.89	3.00%	40.00	290.59	0+700.00
STORM SEWER	0+700.00	0+740.00	290.18	4.00%	40.00	289.78	0+740.00
SANITARY SEWER	0+740.00	0+780.00	290.89	3.00%	40.00	290.59	0+780.00
STORM SEWER	0+780.00	0+820.00	290.18	4.00%	40.00	289.78	0+820.00



- ### LEGEND
- DENOTES LIMIT OF PROPERTY
 - 296.81 DENOTES PROPOSED GRADE
 - 296.81SW DENOTES PROPOSED SWALE GRADE
 - 296.81HP DENOTES PROPOSED SWALE HIGH POINT GRADE
 - 296.81G DENOTES PROPOSED GUTTER GRADE
 - [299.81] DENOTES FUTURE GRADE
 - 296.79 DENOTES EXISTING ELEVATION
 - (296.79) DENOTES INTERPOLATED EXISTING ELEVATION
 - S DENOTES SPLIT DRAINING LOT TYPE
 - B/S DENOTES BACK-SPLIT LOT TYPE
 - W/O DENOTES WALKOUT LOT TYPE
 - ⊙ DENOTES PROPOSED STORM MANHOLE
 - ⊙ DENOTES PROPOSED SANITARY MANHOLE
 - ⊠ DENOTES PROPOSED CATCHBASIN
 - ⊠ DENOTES PROPOSED PUP CATCHBASIN
 - ⊠ DENOTES PROPOSED DOUBLE CATCHBASIN
 - ⊙ DENOTES PROPOSED VALVE & BOX
 - ⊙ DENOTES PROPOSED HYDRANT & VALVE
 - DENOTES PROPOSED DRAINAGE DIRECTION
 - DENOTES PROPOSED DRAINAGE DIRECTION
 - DENOTES EXISTING DRAINAGE DIRECTION
 - DENOTES EMERGENCY OVERLAND FLOW ROUTE
 - 4.0 m OFFSET FROM FOUNDATION WALLS

NOTE: NO STORM CONNECTIONS ARE PROVIDED SINCE THE STORM SYSTEM IS DESIGNED TO SURCHARGE. DWELLINGS WILL BE PROVIDED WITH SUMP PUMPS.

OCS NOTE: MH2 IS TO BE A HYDROWORKS HYDRODOME MODEL HD4.

NO.	DESCRIPTION	DATE
REVISION		

DATE _____

PROJECT TITLE
**PROPOSED RESIDENTIAL SUBDIVISION
 150 CEMETERY ROAD
 UXBRIDGE, ONTARIO**

SHEET TITLE
**CEMETERY ROAD
 PLAN & PROFILE**

POLITIS ENGINEERING LTD.
 PH302 - 133 WYNFORD DRIVE
 TORONTO ONTARIO M3C 0J5
 TEL. (416) 429 - 8645
 FAX. (416) 429 - 8951

DESIGNED BY: T.P. CHECKED BY: T.P.
 DATE: DECEMBER 2021 PROJECT No.: 21575
 SCALES: HORIZ. = 1:500 DWG. No. **202**
 VERT. = 1:50