

**NOTES**

The following notes shall apply to all drawings and associated documents.

Copyright of this drawing and design is reserved by the Designer. The drawing and all associated documents are an instrument of service by the Designer. The drawing and all associated documents are an instrument of service by the Designer. The drawing and all associated documents are an instrument of service by the Designer. The drawing and all associated documents are an instrument of service by the Designer.

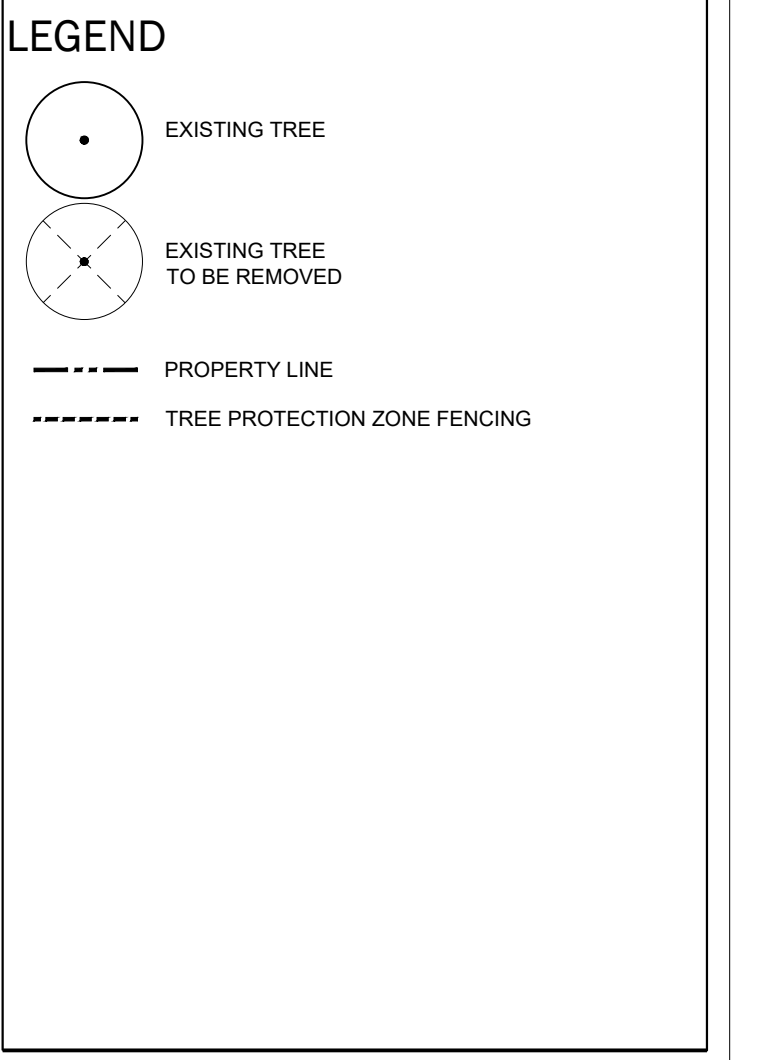
These Contract Documents are the property of the Landscape Architect. The Landscape Architect bears no responsibility for the interpretation of these documents by the Contractor. Upon written application the Landscape Architect will provide written clarification or supplementary information regarding the intent of the Contract Documents. The Landscape Architect will review Shop Drawings submitted by the Contractor for design conformance only.

Drawings are not to be scaled for construction. Contractor to verify all existing conditions and dimensions required to perform the work and report any discrepancies with the Contract Documents to the Landscape Architect before commencing work.

Positions of exposed or finished mechanical or electrical devices, fittings, and fixtures are indicated on Landscape Architectural drawings. The locations shown on the Landscape Architectural drawings govern over the Mechanical and Electrical drawings. Those items not clearly located will be located as directed by the Landscape Architect. These drawings are not to be used for construction unless noted below as "Issued for Construction".

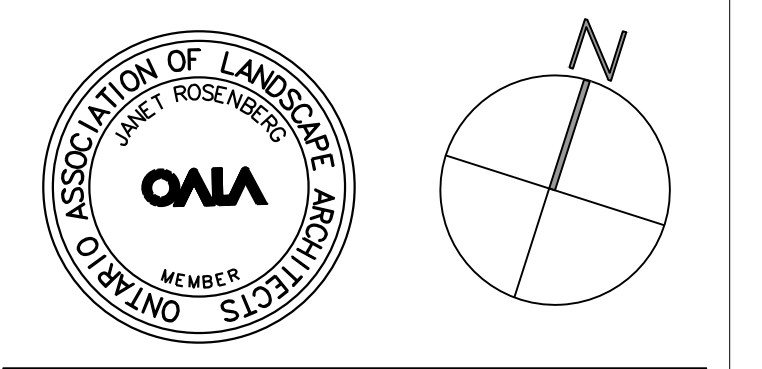
All work to be carried out in conformance with the Code and Bylaws of the authorities having jurisdiction.

The Designer of these plans and specifications gives no warranty or representation to any party about the constructability of the represented by them. All contractors or subcontractors must satisfy themselves when bidding and at all times that they can properly construct the work represented by these plans.



**ISSUE**

3	2024-06-26	ISSUED FOR SPA
2	2024-03-15	REISSUED FOR 100% SD
1	2023-12-20	ISSUED FOR REVIEW & COORDINATION



**Janet Rosenberg & Studio**

**KINDRED WORKS**

20 First Avenue, Uxbridge, ON, LSP-1M4

**TRINITY UXBRIDGE**

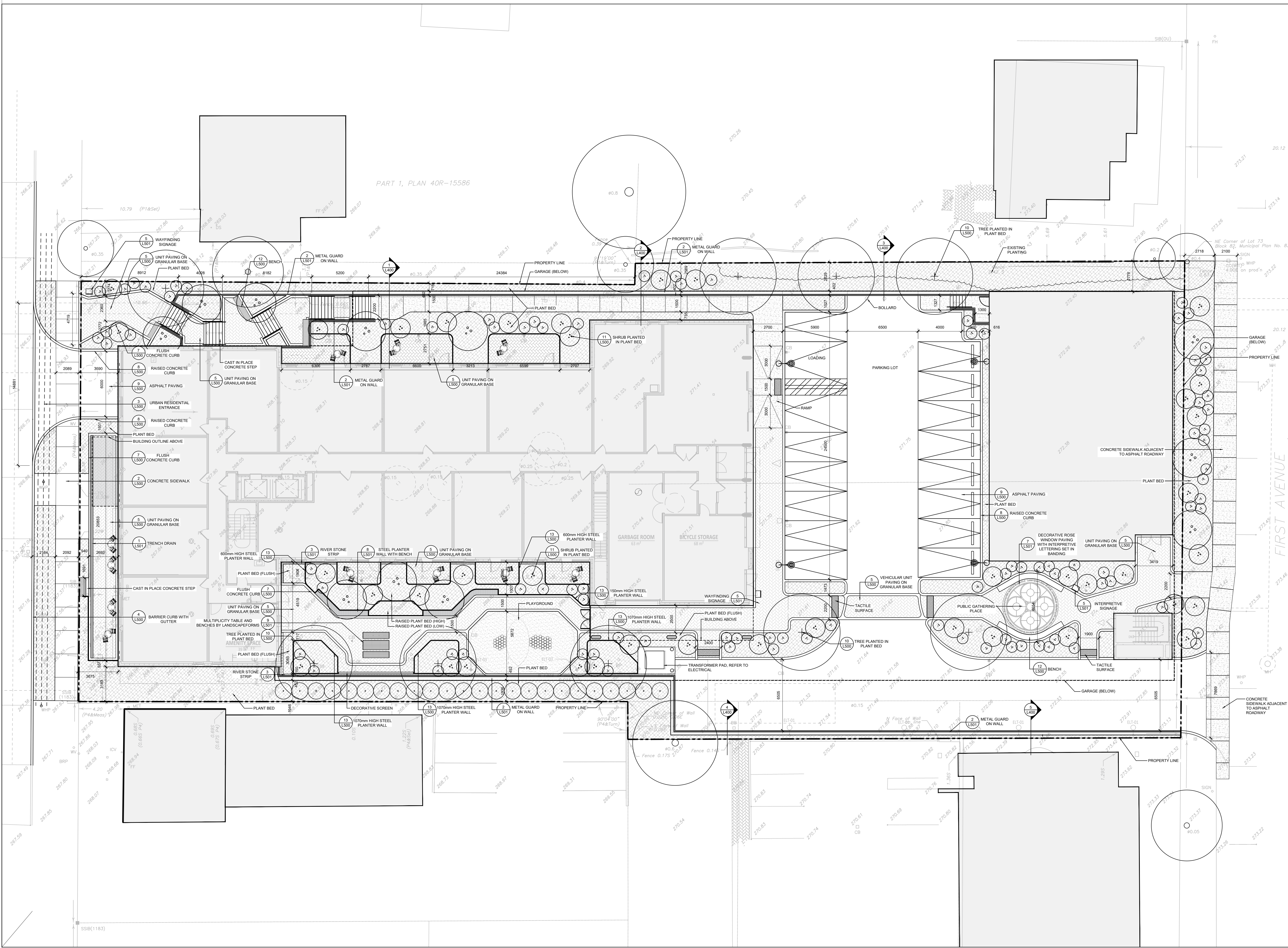
20 First Avenue, Uxbridge, ON, LSP-1M4

**TREE PRESERVATION PLAN**

SCALE: 1:150  
 DRAWN: RM  
 CHECKED: WS  
 PROJECT NUMBER: 23-076  
 DRAWING DATE: 2023-12-20

**L001**





PART 1, PLAN 40R-15586

**NOTES**

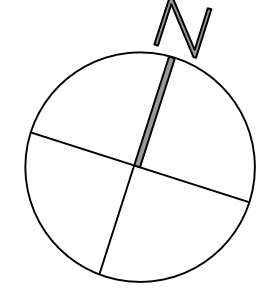
The following notes shall apply to all drawings and associated documents.  
 Copyright of this drawing and design is reserved by the Designer. The drawing and all associated documents are an instrument of service by the Designer. The drawing and all associated documents are not to be reproduced in whole or in part without prior written permission of the Designer.  
 These Contract Documents are the property of the Landscape Architect. The Landscape Architect bears no responsibility for the interpretation of these documents by the Contractor. Upon written application the Landscape Architect will provide written clarification or supplementary information regarding the intent of the Contract Documents. The Landscape Architect will review Shop Drawings submitted by the Contractor for design conformance only.  
 Drawings are not to be scaled for construction. Contractor to verify all existing conditions and dimensions required to perform the work and report any discrepancies with the Contract Documents to the Landscape Architect before commencing work.  
 Positions of exposed or finished mechanical or electrical devices, fittings, and fixtures are indicated on Landscape Architectural drawings. The locations shown on the Landscape Architectural drawings govern over the Mechanical and Electrical drawings. Those items not clearly located will be located as directed by the Landscape Architect.  
 These drawings are not to be used for construction unless noted below as "Issued for Construction".  
 All work to be carried out in conformance with the Code and Bylaws of the authorities having jurisdiction.  
 The Designer of these plans and specifications gives no warranty or representation to any party about the constructability of the represented by them. All contractors or subcontractors must satisfy themselves when bidding and at all times that they can properly construct the work represented by these plans.

**LEGEND**

- EXISTING TREE
- NEW TREE
- NEW MULTI-STEM TREE
- PERENNIAL PLANT BED
- UNIT PAVING
- PROPERTY LINE
- UNDERGROUND GARAGE OUTLINE

**ISSUE**

- 7
- 6
- 5
- 4
- 3 2024-06-26 ISSUED FOR SPA
- 2 2024-03-15 ISSUED FOR 100% SD
- 1 2023-12-20 ISSUED FOR REVIEW & COORDINATION



**Janet Rosenberg & Studio**

**KINDRED WORKS**

**TRINITY UXBRIDGE**

20 First Avenue, Uxbridge, ON, LSP-1144

**LANDSCAPE LAYOUT PLAN**

SCALE: 1:150  
 DRAWN: RM  
 CHECKED: WS  
 PROJECT NUMBER: 23-076  
 DRAWING DATE: 2023-12-20

**L100**