

1 ELECTRICAL SITE PLAN - EARLY WORKS - DEMOLITION WORK
E101E / SCALE: 1:300

DRAWING LIST - EARLY WORKS

SHEET #	DESCRIPTION	SCALE
E101E	ELECTRICAL SITE PLAN - EARLY WORKS	AS INDICATED
E102E	ELECTRICAL DETAILS & SINGLE LINE DIAGRAM - EARLY WORKS	N.T.S.

ELECTRICAL LEGEND	
	EXISTING FEEDER TO BE DEMOLISHED
	EXISTING EQUIPMENT TO BE DEMOLISHED
	EXISTING FEEDER TO REMAIN
	EXISTING EQUIPMENT TO REMAIN
	NEW FEEDER
	NEW EQUIPMENT
< R >	EXISTING TO BE REMOVED
< RL >	EXISTING TO BE RELOCATED
< EX >	EXISTING TO REMAIN
< NL >	EXISTING - NEW LOCATION
	MOTOR, SUBSCRIPT 'X' DENOTES MOTOR DESIGNATION
	DIRECT CONNECTION
	DISCONNECT SWITCH
	FIRE ALARM RELAY

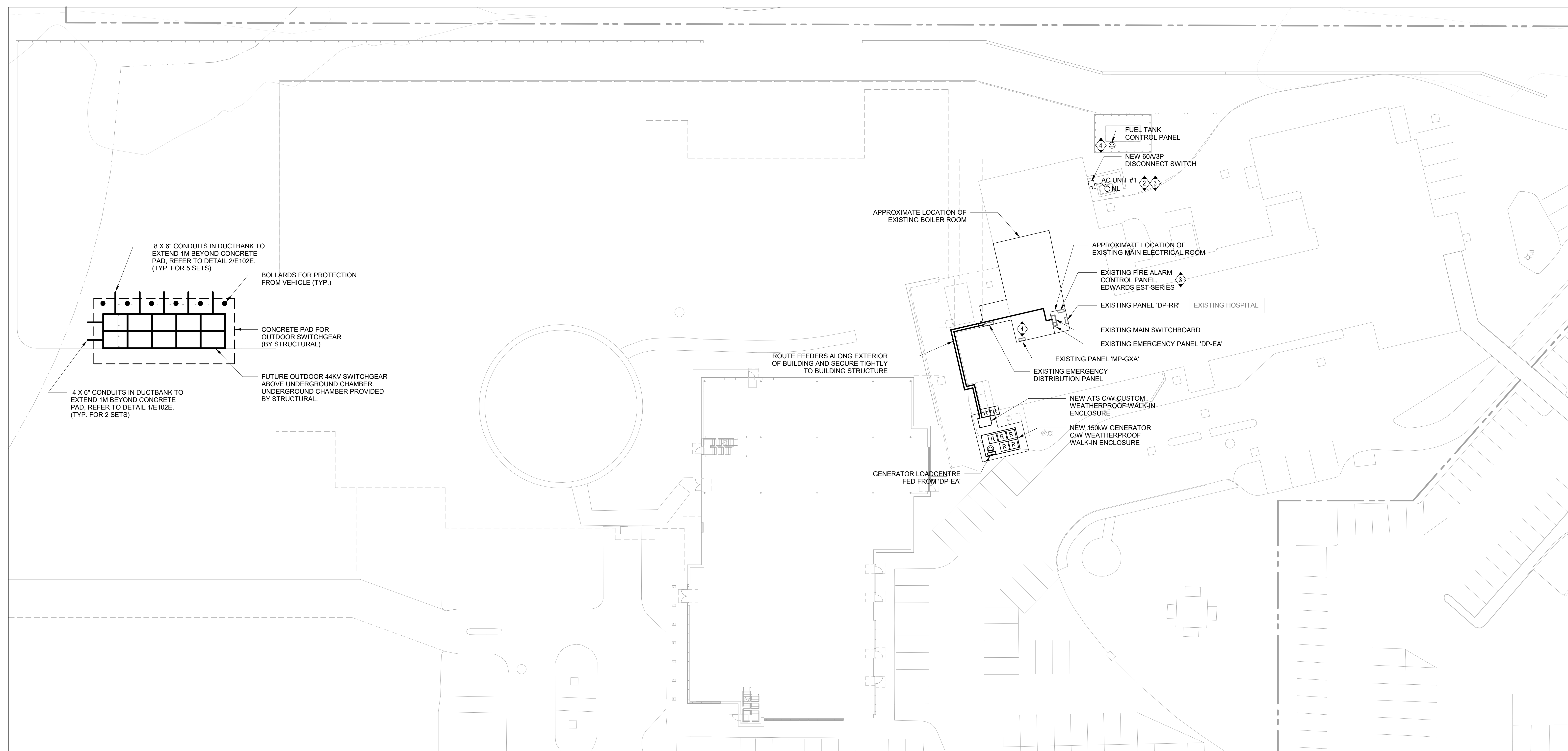
GENERAL NOTES:

- ELECTRICAL DOCUMENTS SHALL BE READ IN CONJUNCTION WITH OTHER CONSULTANT'S DESIGN DOCUMENTS, INCLUDING ARCHITECTURAL, CIVIL AND MECHANICAL.
- THE ROUTING OF SERVICES SHOWN ARE DIAGRAMMATIC TO SHOW DESIGN INTENT.
- PROVIDE ELECTRICAL COORDINATION WITH MECHANICAL EQUIPMENT SELECTION AND LOCATION. REFER TO MECHANICAL DRAWINGS FOR DETAILS. PROVIDE CONNECTIONS TO VFDs, STARTERS, SWITCHES, AND CONTROL BASED ON MECHANICAL DOCUMENTS. VERIFY THE FINAL LOCATION OF MECHANICAL EQUIPMENT PRIOR TO INSTALLATION.
- FOR EQUIPMENT AND DEVICES NOTED TO BE REMOVED, REMOVE ALL ASSOCIATED FEEDERS, CONDUITS, AND SUPPORTS BACK TO SOURCE.
- COORDINATE HOUSEKEEPING PAD AND NEW OUTDOOR EQUIPMENT INSTALLATION, INCLUDING GENERATOR ENCLOSURE AND ATS ENCLOSURE.
- PROVIDE PENETRATIONS AS REQUIRED TO ACCOMMODATE ROUTING OF FEEDERS AND CONDUITS, INCLUDING PENETRATION THROUGH EXISTING HOSPITAL EXTERIOR WALL AND MAIN ELECTRICAL ROOM.
- FOR EXISTING BUILDING/WING TO BE DEMOLISHED, REMOVE ALL EXISTING ELECTRICAL EQUIPMENT AND DEVICES, INCLUDING AND NOT LIMITED TO LIGHT FIXTURES, WIRING DEVICES, CONDUITS, WIRING, AND JUNCTION BOXES, UNLESS NOTED OTHERWISE. COORDINATE EXACT DEMOLITION SCOPE OF WORK WITH GENERAL CONTRACTOR.
- PROVIDE ONE (1) NEW 100A/3P BREAKER IN EXISTING PANEL 'DP-EA' IN MAIN ELECTRICAL ROOM FOR GENERATOR LOADCENTRE.
- PROVIDE POWER CONNECTIONS FOR UNIT HEATERS, LIGHT FIXTURE, AND OTHER EQUIPMENT AND DEVICES WITHIN GENERATOR AND ATS WALK-IN ENCLOSURES. COORDINATE WITH GENERATOR AND ATS SUPPLIERS AS REQUIRED. POWER PROVISIONS FOR EQUIPMENT AND DEVICES WITHIN GENERATOR AND ATS WALK-IN ENCLOSURES SHALL BE FED FROM GENERATOR LOADCENTRE. PROVIDE BREAKERS TO SUIT.
- PROVIDE SEVEN (7) NEW FIRE ALARM CONTACTS FOR THE FOLLOWING ZONES:
 - GENERATOR RUNNING
 - GENERATOR TROUBLE
 - GENERATOR LOW FUEL
 - GENERATOR LOW BATTERY
 - ATS NOT IN AUTO
 - GENERATOR ENCLOSURE
 - ATS ENCLOSURE
 MODIFY EXISTING FIRE ALARM SYSTEM, INCLUDING FIRE ALARM CONTROL PANEL AND FIRE ALARM ANNUNCIATOR TO INCLUDE SEVEN (7) NEW FIRE ALARM ZONES.

Issued	No.	Date	Description
	1	2024-07-11	OWNER REVIEW
	2	2024-11-28	ISSUED FOR SITE PLAN APPROVAL

KEY NOTES:

- EXISTING AC UNIT #1 TO BE DISCONNECTED AND MADE SAFE FOR RELOCATION BY OTHERS. ALL EXISTING WIRING AND CONDUIT SHALL BE MADE SAFE FOR RECONNECTION TO RELOCATED AC UNIT. PROVIDE NEW OUTDOOR DISCONNECT SWITCH AND NEW WIRING AND CONDUIT AS REQUIRED TO SUIT NEW AC UNIT LOCATION.
- PROVIDE NEW OUTDOOR DISCONNECT SWITCH AND NEW WIRING AND CONDUIT AS REQUIRED TO SUIT NEW AC UNIT LOCATION.
- PROVIDE NEW FIRE ALARM TIE-IN FROM EXISTING FIRE ALARM CONTROL PANEL TO RELOCATED AC UNIT #1. MODIFY EXISTING FIRE ALARM SYSTEM, INCLUDING FIRE ALARM CONTROL PANEL AND FIRE ALARM ANNUNCIATOR TO INCLUDE NEW AUXILIARY CONTACT FOR AC UNIT #1 EMERGENCY SHUTDOWN UPON FIRE ALARM. COORDINATE EXACT REQUIREMENT AND SEQUENCE OF OPERATION WITH MECHANICAL CONTRACTOR.
- PROVIDE POWER CONNECTION FOR NEW FUEL TANK CONTROL PANEL. COORDINATE WITH MECHANICAL CONTRACTOR FOR EXACT CONTROL PANEL LOCATION AND POWER REQUIREMENT. PROVIDE ONE (1) NEW 15A/1P BREAKER IN EXISTING PANEL 'MP-GXA' IN BOILER ROOM FOR NEW FUEL TANK CONTROL PANEL CIRCUIT.



2 ELECTRICAL SITE PLAN - EARLY WORKS - NEW WORK
E101E / SCALE: 1:300

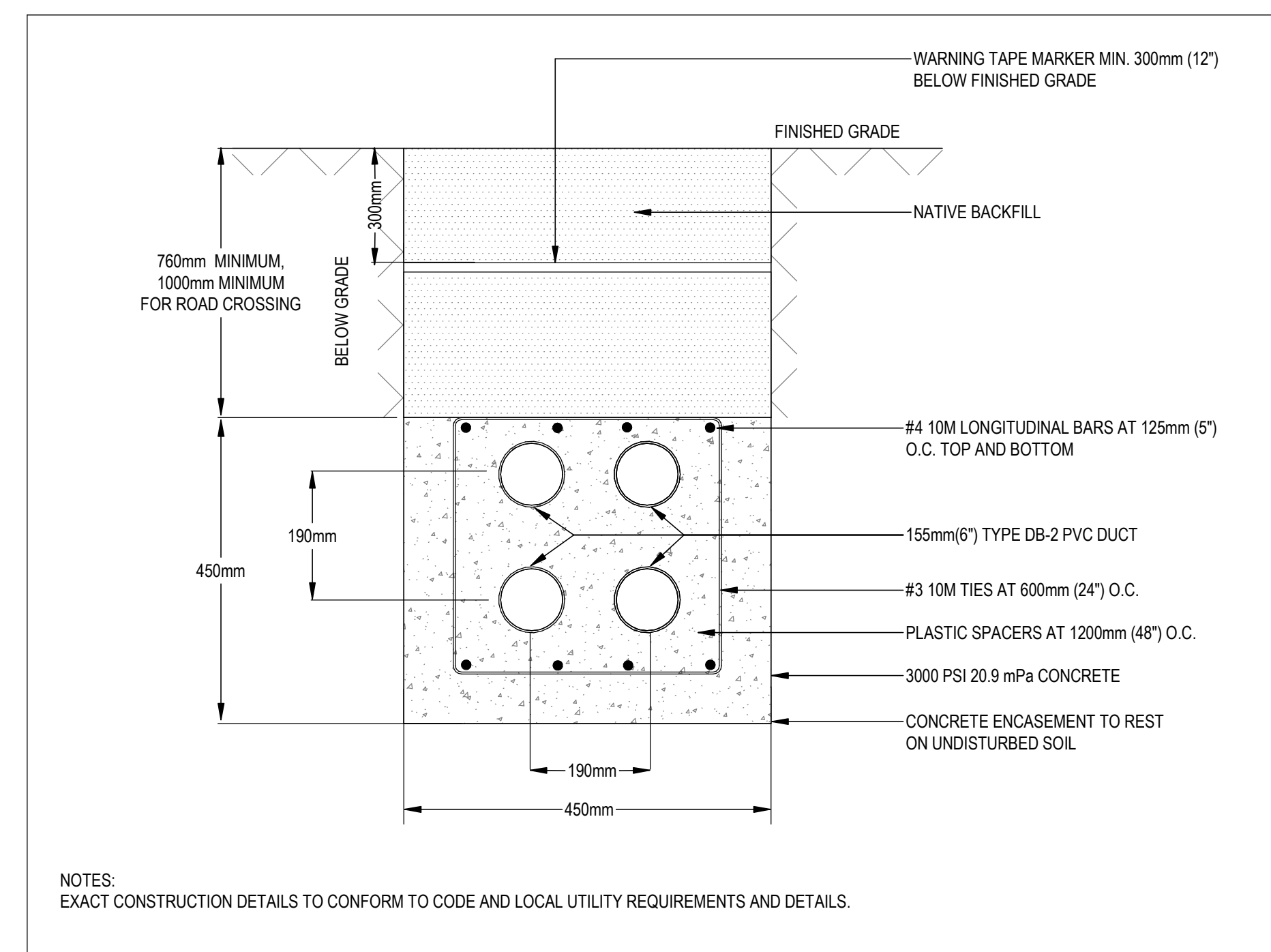
GENERAL NOTES:

1. CONDUIT AND FEEDER SIZES INDICATED ON THE DRAWINGS ARE MINIMUM SIZES AND SHALL BE INCREASED AS REQUIRED TO SUIT LENGTH OF RUN AND VOLTAGE DROP.

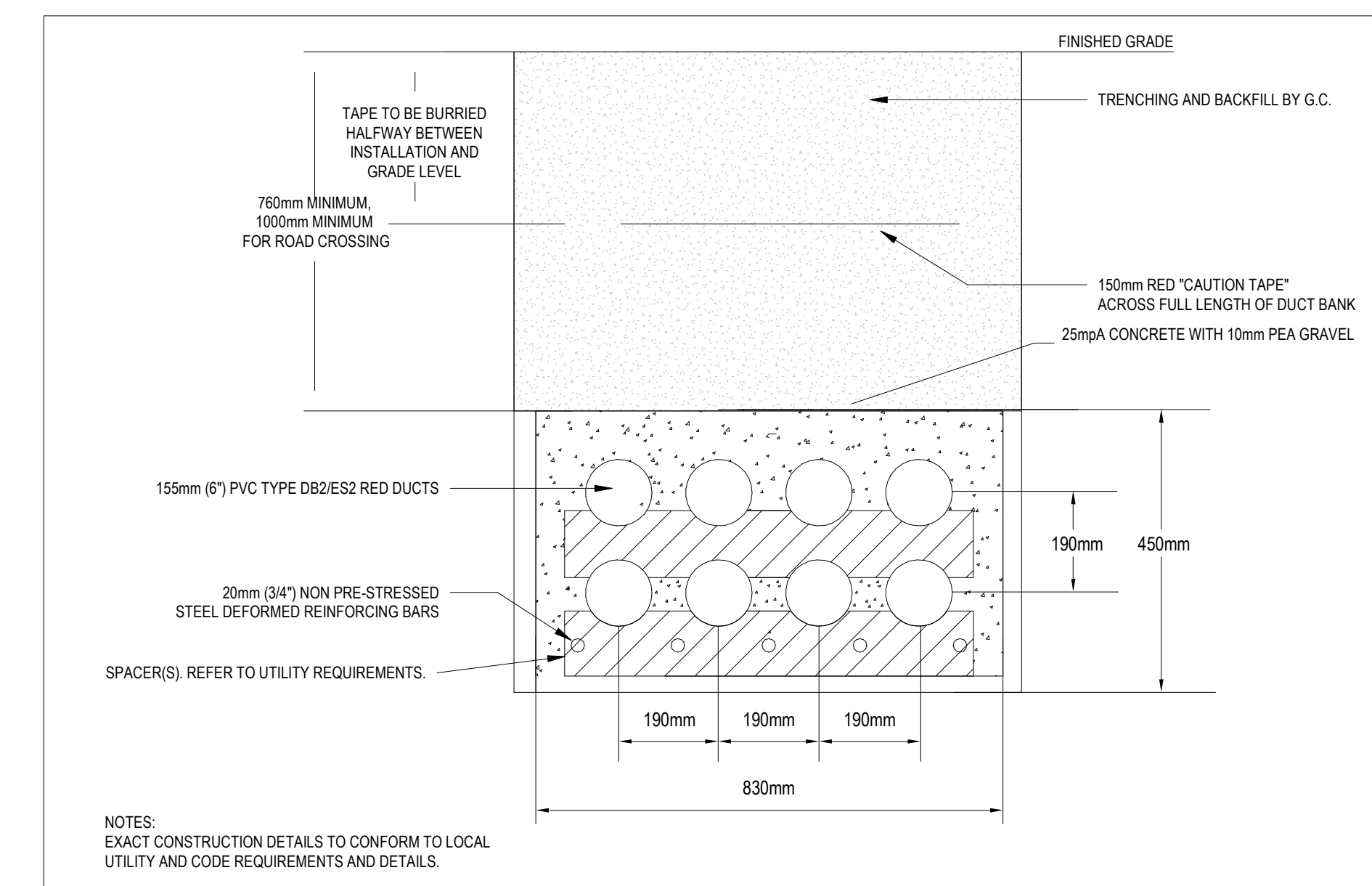
KEY NOTES:

1. EXISTING AC UNIT #1 TO BE DISCONNECTED AND MADE SAFE FOR RELOCATION BY OTHERS. ALL EXISTING WIRING AND CONDUIT SHALL BE MADE SAFE FOR RECONNECTION TO RELOCATED AC UNIT. PROVIDE NEW OUTDOOR DISCONNECT SWITCH AND NEW WIRING AND CONDUIT AS REQUIRED TO SUIT NEW AC UNIT LOCATION.
2. PROVIDE NEW OUTDOOR DISCONNECT SWITCH AND NEW WIRING AND CONDUIT AS REQUIRED TO SUIT NEW AC UNIT LOCATION.
3. PROVIDE NEW FIRE ALARM TIE-IN FROM EXISTING FIRE ALARM CONTROL PANEL TO RELOCATED AC UNIT #1. MODIFY EXISTING FIRE ALARM SYSTEM, INCLUDING FIRE ALARM CONTROL PANEL AND FIRE ALARM ANNUNCIATOR TO INCLUDE NEW AUXILIARY CONTACT FOR AC UNIT #1 EMERGENCY SHUTDOWN UPON FIRE ALARM. COORDINATE EXACT REQUIREMENT AND SEQUENCE OF OPERATION WITH MECHANICAL CONTRACTOR.
4. PROVIDE POWER CONNECTION FOR NEW FUEL TANK CONTROL PANEL. COORDINATE WITH MECHANICAL CONTRACTOR FOR EXACT CONTROL PANEL LOCATION AND POWER REQUIREMENT. PROVIDE ONE (1) NEW 'SAFETY' BREAKER IN EXISTING PANEL. 'MP-GXA' IN BOILER ROOM FOR NEW FUEL TANK CONTROL PANEL CIRCUIT.
5. COORDINATE EXACT BREAKER SIZE FOR LOAD BANK CONNECTION BOX WITH GENERATOR SUPPLIER.

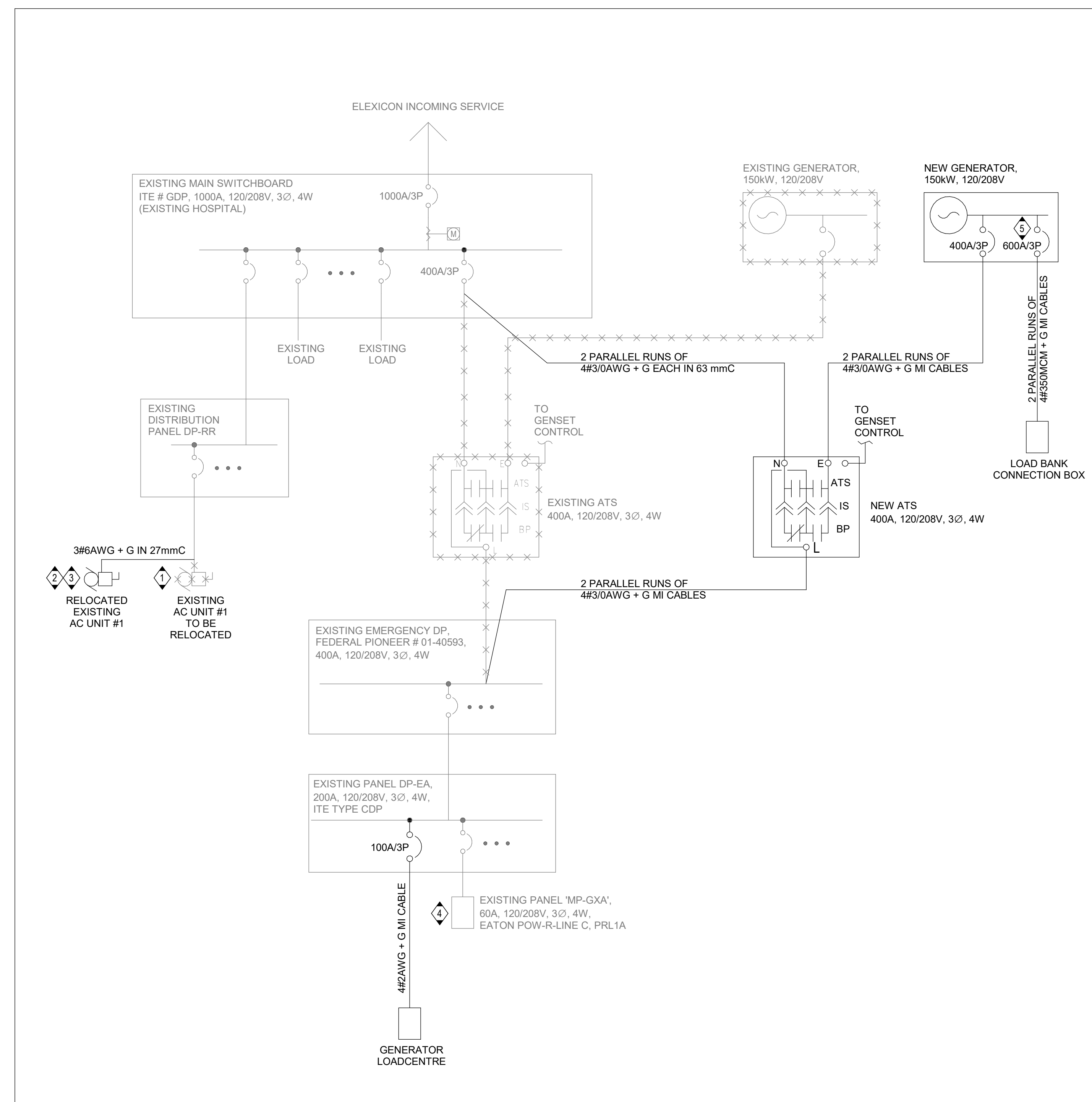
Issue No.	Date	Description
1	2024-11-28	ISSUED FOR SITE PLAN APPROVAL



1
ELECTRICAL DUCT BANK DETAIL #1
SCALE: NTS

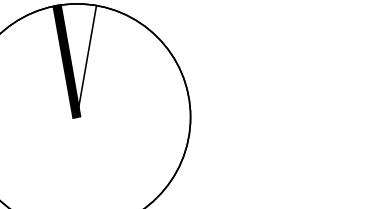


2
ELECTRICAL DUCT BANK DETAIL #2
SCALE: NTS



4
EARLY WORK SINGLE LINE DIAGRAM
SCALE: NTS

exp Services Inc.
E=1 888.666.3477
235 Commerce Valley Drive West
Suite 110, Markham, ON L3T 0A8
Canada
www.exp.com



OWNER: DO NOT SCALE DRAWING
THIS REPRODUCTION MAY BE AT A SIZE DIFFERENT THAN ORIGINALLY
DRAWN: OUR AGENTS ASSUME NO RESPONSIBILITY FOR INACCURATE
UNAUTHORIZED REPRODUCTION OR REUSE IS STRICTLY PROHIBITED. NOT
RESPONSIBILITY ARISING FROM UNAUTHORIZED USE OF THESE DRAWINGS
AND NOTES. AUTHORIZATION MUST BE IN WRITING.
© sep. 2024



UXBRIDGE HOSPITAL -
OAK VALLEY HEALTH

ELECTRICAL DETAILS & SINGLE
LINE DIAGRAM - EARLY WORKS
As indicated
E102E