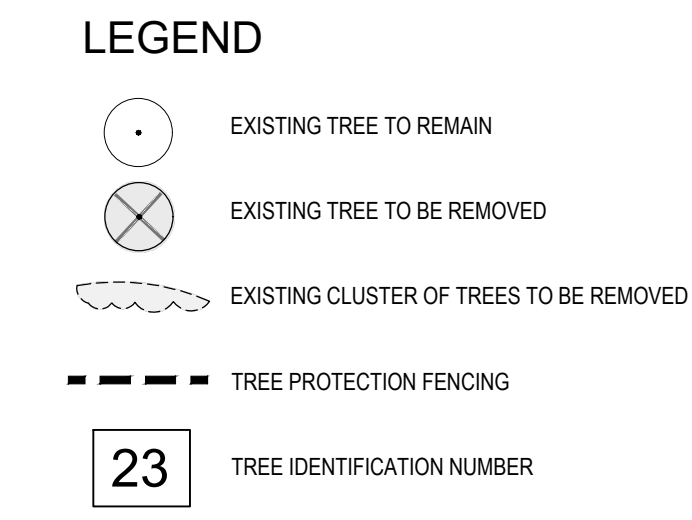


- GENERAL NOTES:**
1. DRAWINGS NOT TO BE USED FOR CONSTRUCTION UNLESS AUTHORIZED BY THE LANDSCAPE ARCHITECT
 2. CONTRACTOR SHALL REPORT ANY DISCREPANCIES BETWEEN THE DRAWINGS AND SITE CONDITIONS PRIOR TO COMMENCEMENT OF THE WORK
 3. ALL UTILITY LOCATES ARE THE RESPONSIBILITY OF THE CONTRACTOR. HANDS WITHIN THE LIMITS RECOMMENDED BY THE SERVICE UTILITY. UTILITY CONFLICTS WITH PROPOSED TREE LOCATIONS MUST BE REPORTED IMMEDIATELY TO THE LANDSCAPE ARCHITECT
 4. BASE DRAWING PROVIDED BY DIAMOND SCHMITT ARCHITECTS
 5. VEGETATION INVENTORY BY GSP GROUP INC.
 6. LANDSCAPE DRAWINGS SHOW ENGINEERING INFORMATION FOR DESIGN PURPOSES ONLY. DO NOT CONSTRUCT ENGINEERING WORKS FROM THESE DRAWINGS



ISSUED

NO.	DATE	DESCRIPTION
1	2024-04-01	Issued for Schematic Design Coordination
2	2024-06-08	Issued for MCH Draft Submission
3	2024-05-02	Issued for Stage 2.1 Block Schematics
4	2024-07-12	Issued for Coordination
5	2024-07-31	Issued for S&P/D
6	2024-09-19	Issued for Site Plan Approval
7	2024-11-08	Issued for Site Plan Approval

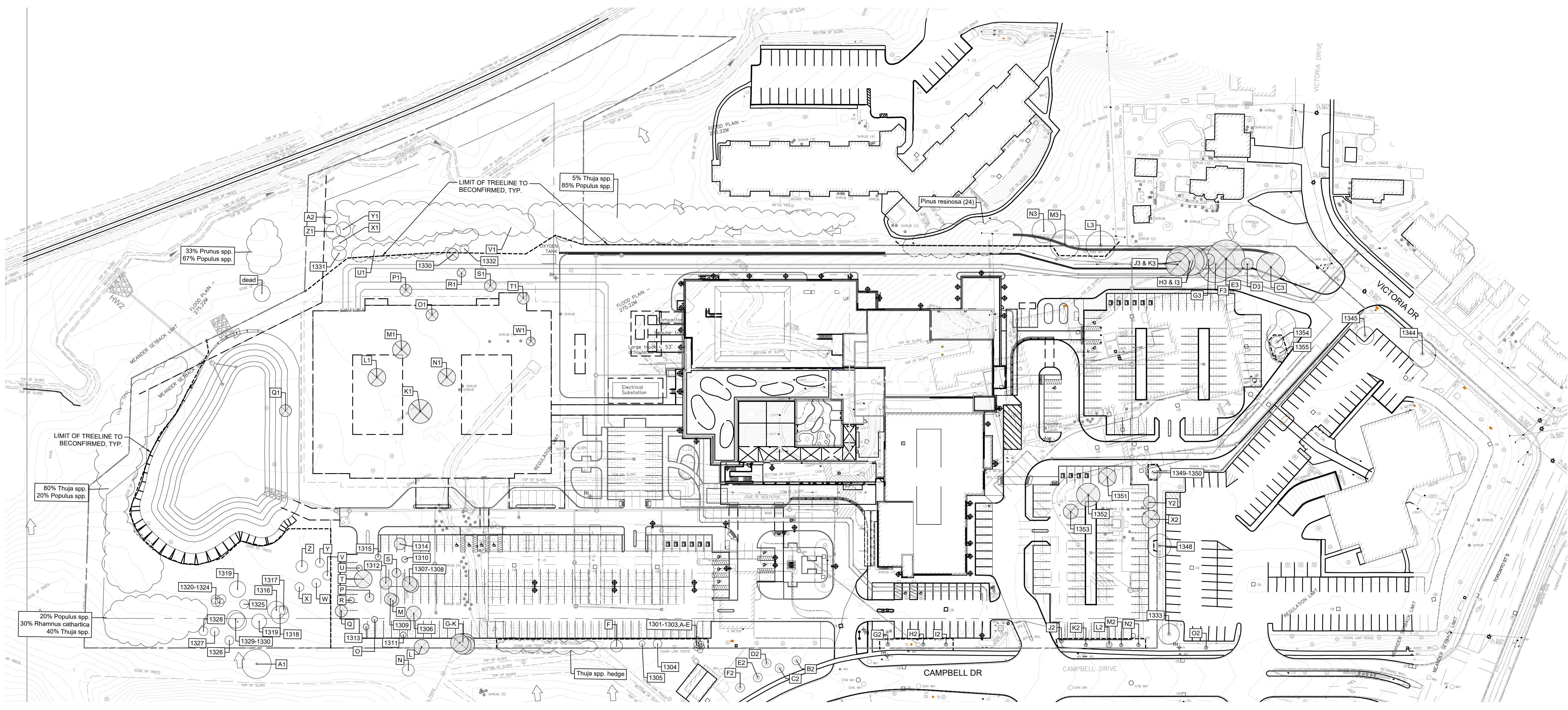
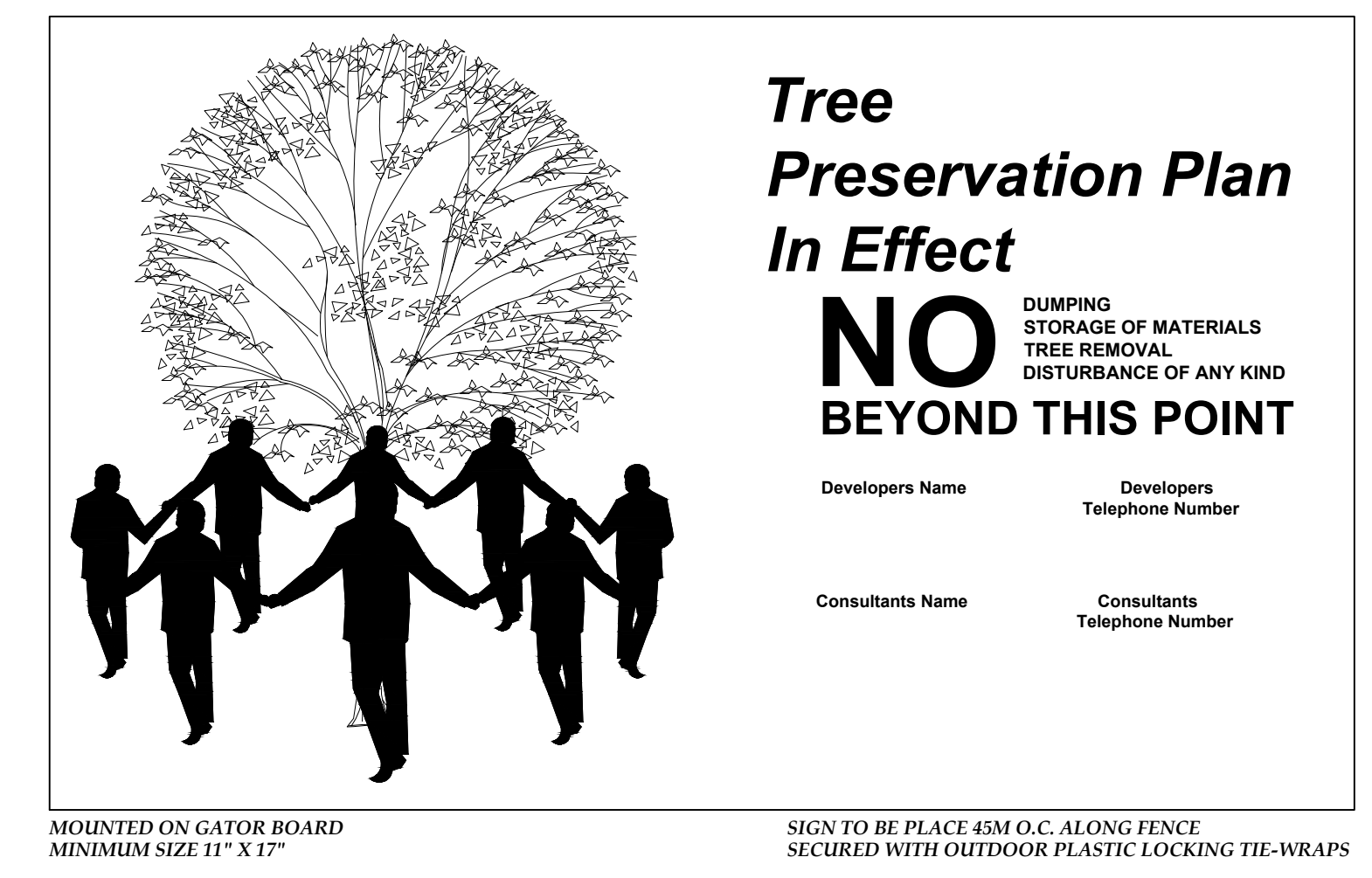
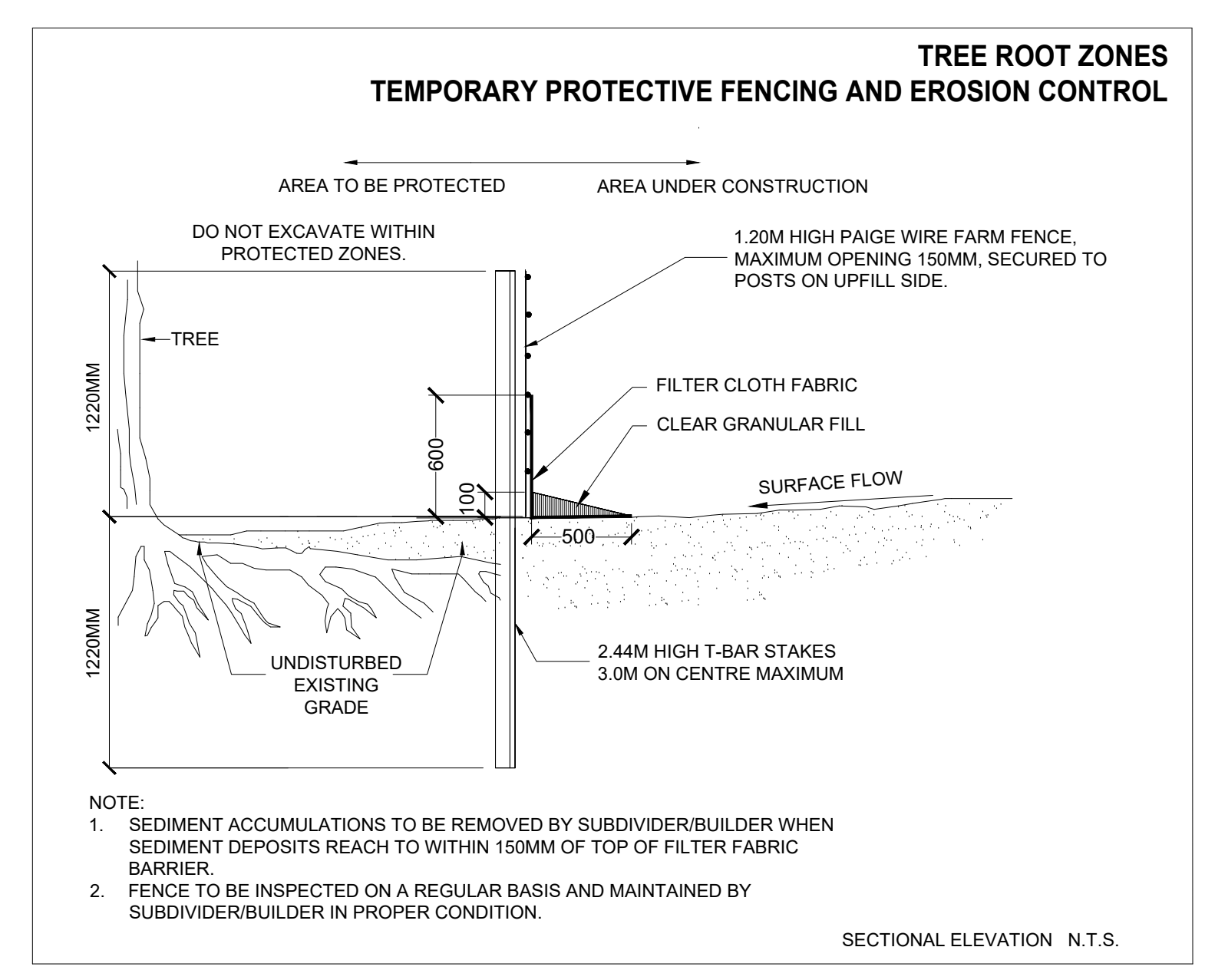
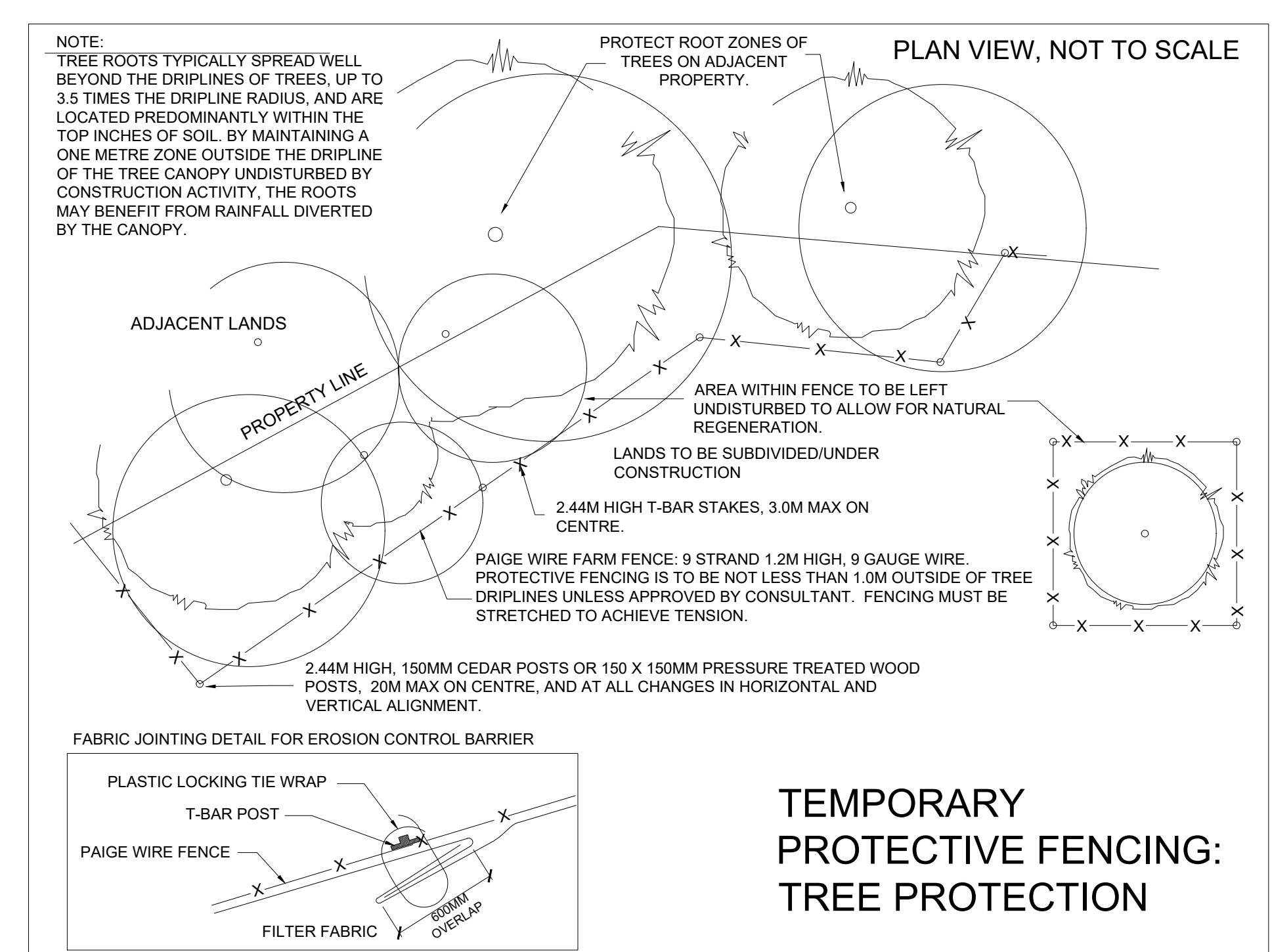
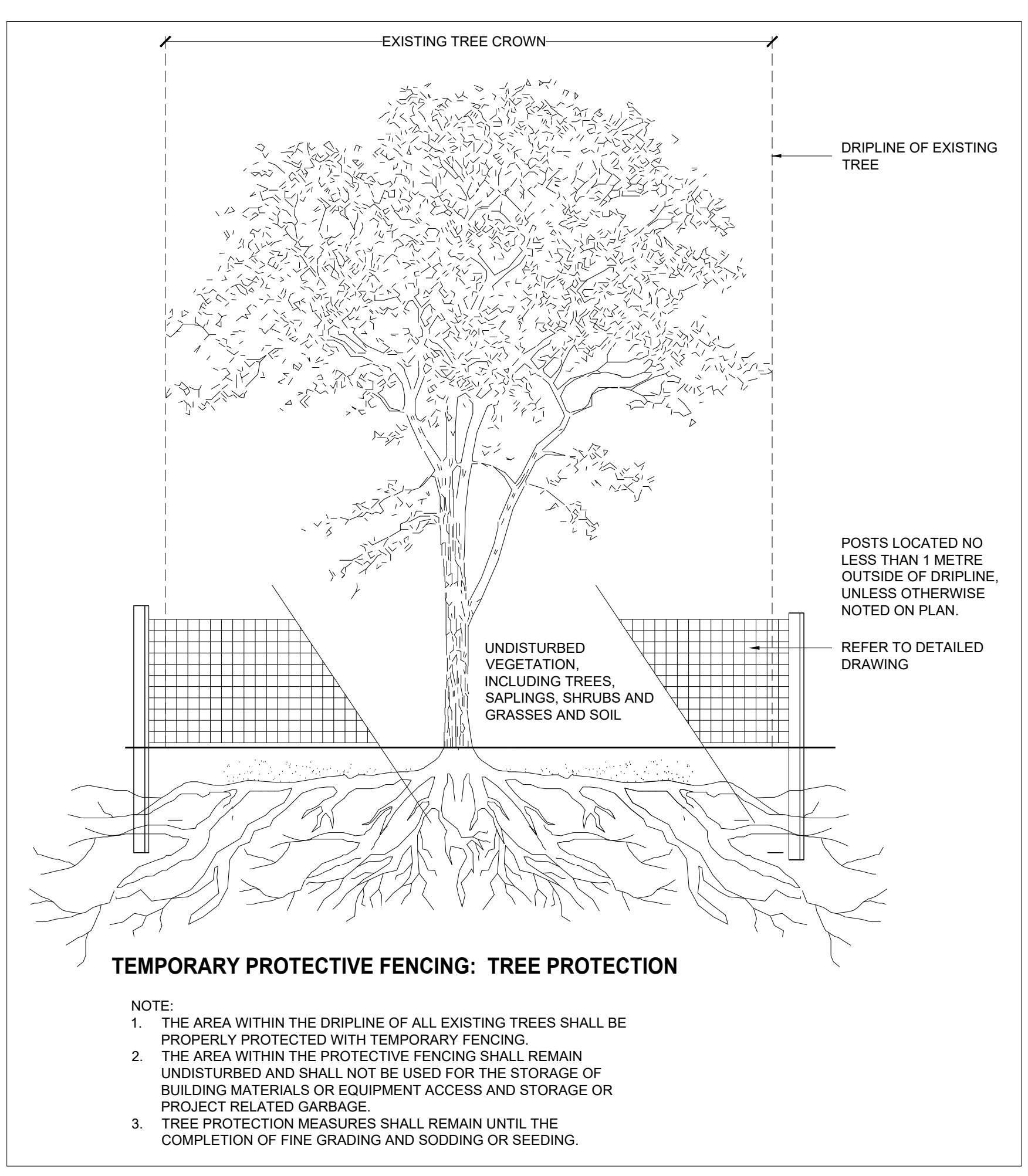
Legend

Health and Structural Condition	Recommended Action
E - Excellent	P - Protect, monitor and remain.
G - No defects, well-developed crown	R - Remove
F - Minor defects or symptoms of disease	Rc - Remove due to construction
P - Major defects or symptoms of disease	Remove with municipal approval
Dead	** - Remove with neighbours approval
	T - Transplant

Tree Inventory
Species of significant size 100mm DBH or greater

Site Date: September 26 2023
Field Personnel: GSP Group- Summer Scott
Tree locations approximated in field - no survey provided
- tagged by others

Tree No.	Botanical Name	Common Name	Stems	DBH (cm)	Drip-line Radius (m)	Location			Comments	Recommended Action
						Municipal Property	Subject Property	Adjacent Property (6m to PL)		
1301	Populus spp.	Poplar spp.	1	12	1					P
1302	Populus spp.	Poplar spp.	1	14	1	x				P
1303	Populus spp.	Poplar spp.	1	10	1	x				P
1304	Populus spp.	Poplar spp.	1	20.5	1.5	x				P
1305	Populus spp.	Poplar spp.	1	17	1	x				P
1306	Thuja spp.	Cedar spp.	1	39	2.5	x				R
1307	Thuja spp.	Cedar spp.	1	23	2.5	x				R
1308	Thuja spp.	Cedar spp.	1	22.5	2.5	x				R
1309	Thuja spp.	Cedar spp.	1	25	2	x				R
1310	Thuja spp.	Cedar spp.	1	33	1	x				R
1311	Thuja spp.	Cedar spp.	1	25	1	x				R
1312	Thuja spp.	Cedar spp.	3	45	2	x				R
1313	Thuja spp.	Cedar spp.	1	20	1	x				R
1314	Acer negundo	Manitoba Maple	1	11	2	x				R
1315	Prunus serotina	Black Cherry	1	13.5	1	x				R
1316	Thuja spp.	Cedar spp.	1	36	3	x				P
1317	Thuja spp.	Cedar spp.	1	16	1.5	x				P
1318	Thuja spp.	Cedar spp.	1	40	3	x				P
1319	Thuja spp.	Cedar spp.	1	40	2.5	x				P
1320	Thuja spp.	Cedar spp.	1	10.5	0.5	x				P
1321	Thuja spp.	Cedar spp.	1	10.5	0.5	x				P
1322	Thuja spp.	Cedar spp.	1	28.5	3	x				P
1323	Thuja spp.	Cedar spp.	1	26	2	x				P
1324	Thuja spp.	Cedar spp.	1	15	1.5	x				P
1325	Rhamnus spp.	Buckhorn	1	10	1.5	x				P
1326	Rhamnus spp.	Buckhorn	1	15	1.5	x				P
1327	Rhamnus spp.	Buckhorn	1	15	1.5	x				P
1328	Rhamnus spp.	Buckhorn	1	15	1.5	x				P
1329	Thuja spp.	Cedar spp.	1	23	3	x				P
1330	Rhamnus spp.	Buckhorn	1	20	3	x				P
1330	Populus tremuloides	Trembling aspen	1	14.5	2	x				R
1331	Thuja spp.	Cedar spp.	1	40	2.5	x				P
1332	Populus spp.	Poplar spp.	1	16	1.5	x				P
1333	Tilia spp.	Linden spp.	1	41.5	3.5	x				P
1344	Acer platanoides	Norway Maples	1	38.5	4.5	x				P
1345	Picea glauca	White Spruce	1	39	3	x				P
1348	Tilia cordata	Linden	1	4	4	x				P
1349	Tilia cordata	Linden	1	32	2.5	x				P
1350	Tilia cordata	Linden	1	41	2.5	x				P
1351	Picea pungens	Blue Spruce	1	45.5	3	x				R
1352	Tilia cordata	Linden	1	44.5	4	x				R
1353	Tilia cordata	Linden	1	30.5	2.5	x				R
1354	Acer negundo	Manitoba Maple	1	22.5	2	x				P
1355	Acer negundo	Manitoba Maple	1	16.5	2	x				P
A	Populus spp.	Poplar spp.	1	21	1.5	x				P
B	Populus spp.	Poplar spp.	1	15	1	x				P
C	Populus spp.	Poplar spp.	1	19	1	x				P
D	Populus spp.	Poplar spp.	1	18	1	x				P
E	Populus spp.	Poplar spp.	1	19	1	x				P
F	Rhamnus spp.	Buckhorn spp.	3	25 to 10 (2)	2	x				P
G	Thuja spp.	Cedar spp.	1	28	2.5	x				R
H	Thuja spp.	Cedar spp.	1	31	3	x				R
I	Thuja spp.	Cedar spp.	1	48	3	x				R
J	Thuja spp.	Cedar spp.	1	44	3	x				R
K	Thuja spp.	Cedar spp.	1	35	3	x				R
L	Thuja spp.	Cedar spp.	1	25	2.5	x				R
M	Thuja spp.	Cedar spp.	1	23	2	x				R
N	Acer platanoides	Norway Maple	1	23	2	x				P
O	Picea glauca	White Spruce	1	48	5	x				R
P	Thuja spp.	Cedar spp.	3	30	1.5	x				R
Q	Thuja spp.	Cedar spp.	2	34	2	x				R
R	Thuja spp.	Cedar spp.	1	41	1	x				R
S	Rhamnus spp.	Buckhorn spp.	8	8x10	1.5	x				R
T	Populus spp.	Poplar spp.	7	45,6x40	3	x				R
U	Populus spp.	Poplar spp.	4	15,10,8.5	1	x				R
V	Thuja spp.	Cedar spp.	2	30	1	x				P
W	Thuja spp.	Cedar spp.	1	12	0.5	x				P
X	Populus spp.	Poplar spp.	6	35,33,33	1.5	x				P
Y	Populus spp.	Poplar spp.	8	35	1.5	x				P
Z	Juglans nigra	Black Walnut	1	28	2	x				P
A1	Pinus sylvestris	Scots Pine	1	60	5	x				P
K1	Pinus sylvestris	Scots Pine	1	30	4	x				R
L1	Pinus sylvestris	Scots Pine	1	25	3	x				R
M1	Pinus sylvestris	Scots Pine	1	22	3	x				R
N1	Pinus sylvestris	Scots Pine	1	30	3	x				R
O1	Pinus sylvestris	Scots Pine	1	25	2	x				R
P1	Pinus sylvestris	Scots Pine	1	25	2	x				R
Q1	Pinus sylvestris	Scots Pine	1	25	2	x				R
R1	Populus tremuloides	Trembling Aspen	1	22	1.5	x				R
S1	Pinus sylvestris	Scots Pine	1	20	2	x				R
T1	Pinus resinosa	Red Pine	1	30	2	x				R
U1	Populus tremuloides	Trembling Aspen Cluster (20 trees)	45 to 10	2	x					P
V1	Pinus spp.	White Pine (20 Trees)	45 to 20	1	x					P
W1	Prunus serotina	Black Cherry (20 trees)	15 to 18	1.5	x					P
X1	Thuja spp.	Cedar spp.	1	45	2.5	x				P
Y1	Thuja spp.	Cedar spp.	1	42	2.5	x				P
Z1	Thuja spp.	Cedar spp.	1	40	2.5	x				P
A2	Thuja spp.	Cedar spp.	1	38	2.5	x				P
B2	Populus spp.	Poplar spp.	1	32.5	1.5	x				P
C2	Picea pungens	Blue Spruce	1	32	1.5	x				P
D2	Picea pungens	Blue Spruce	1	32	1.5	x				P
E2	Picea pungens	Blue Spruce	1	35	1.5	x				P
F2	Picea pungens	Blue Spruce	1	36	1.5	x				P
G2	Ulmus spp.	Elm spp.	1	4.5	0.5	x				P
H2	Ulmus spp.	Elm spp.	1	4.5	0.5	x				P
I2	Ulmus spp.	Elm spp.	1	4.5	0.5	x				P
J2	Ulmus spp.	Elm spp.	1	4	0.5	x				P
K2	Acer spp.	Maple spp.	1	31	0.5	x				P
L2	Ulmus spp.	Elm spp.	1	5	1	x				P
M2	Acer	Maple spp.	1	6	0.5	x				P
N2	Prunus spp.	Cherry spp.	1	4	0.5	x				P
O2	Prunus spp.	Cherry spp.	1	6	0.5	x				P
X2	Pinus resinosa	Red Pine	4	32 to 40	3	x				P
Y2	Thuja spp.	Cedar spp.	2	25 to 20	2	x				P
Z2	Acer platanoides	Norway Maples (11 trees)	30 to 20	5	x					R
A3	Thuja spp.	Cedar hedge (19 trees)	20 to 10	2	x					R
B3	Acer spp.	Maple spp.	4	60 to 80	6.5	x				R
F3	Acer platanoides	Norway Maple	1	65	6.5	x				R
G3	Thuja spp.	Cedar hedge (15 trees)	20 to 10	2	x					R
H3	Acer saccharinum	Silver Maple	1	60	6	x				R
I3	Acer saccharinum	Silver Maple	1	45	5	x				R
J3	Fraxinus spp.	Ash spp.	1	45	5	x				R
K3	Fraxinus spp.	Ash spp. (10 Trees)	40 to 15	4	x					R
L3	Acer saccharinum	Silver Maple	1	55	5	x				R
M3	Acer saccharinum	Silver Maple	1	65	5	x				R
N3	Acer saccharinum	Silver Maple	1	54	4	x				R
O3	Pinus resinosa	Red Pines (24 Trees)	25 to 22	2.5	x					P

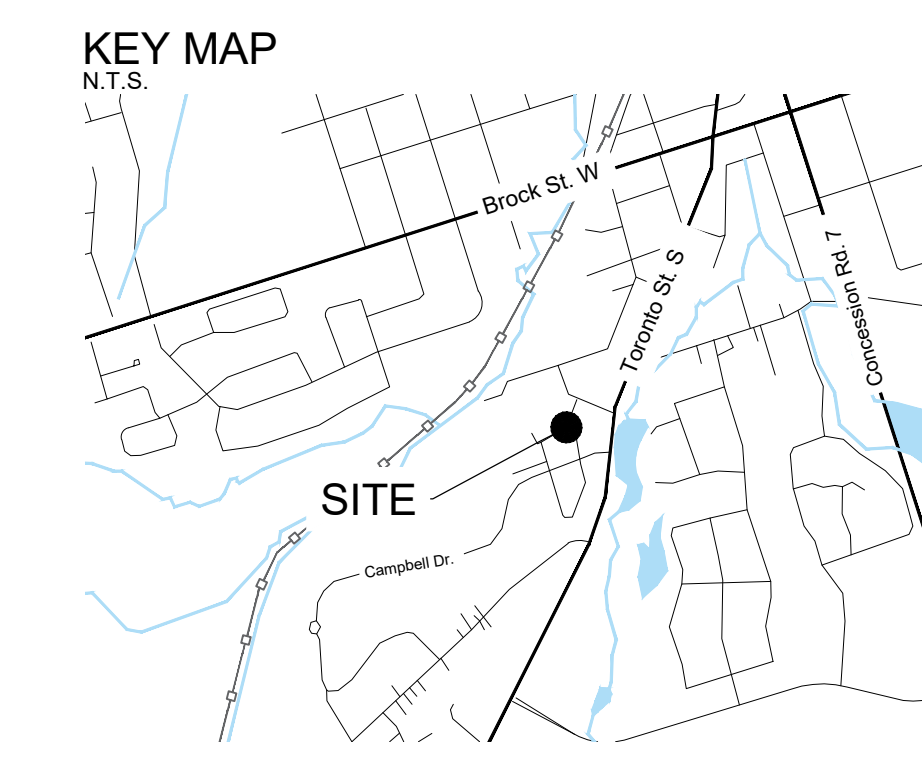


NOT FOR CONSTRUCTION

CONTRACTOR MUST CHECK & VERIFY ALL DIMENSIONS ON THE JOB
DO NOT SCALE DRAWINGS

ALL DRAWINGS, SPECIFICATIONS AND RELATED DOCUMENTS ARE THE COPYRIGHT PROPERTY OF THE ARCHITECT AND NOT TO BE REPRODUCED, COPIED, REPRODUCED OR REPRODUCED IN ANY MANNER WITHOUT THE WRITTEN PERMISSION OF THE ARCHITECT

THIS DRAWING IS NOT TO BE USED FOR CONSTRUCTION UNLESS SIGNED BY THE ARCHITECT

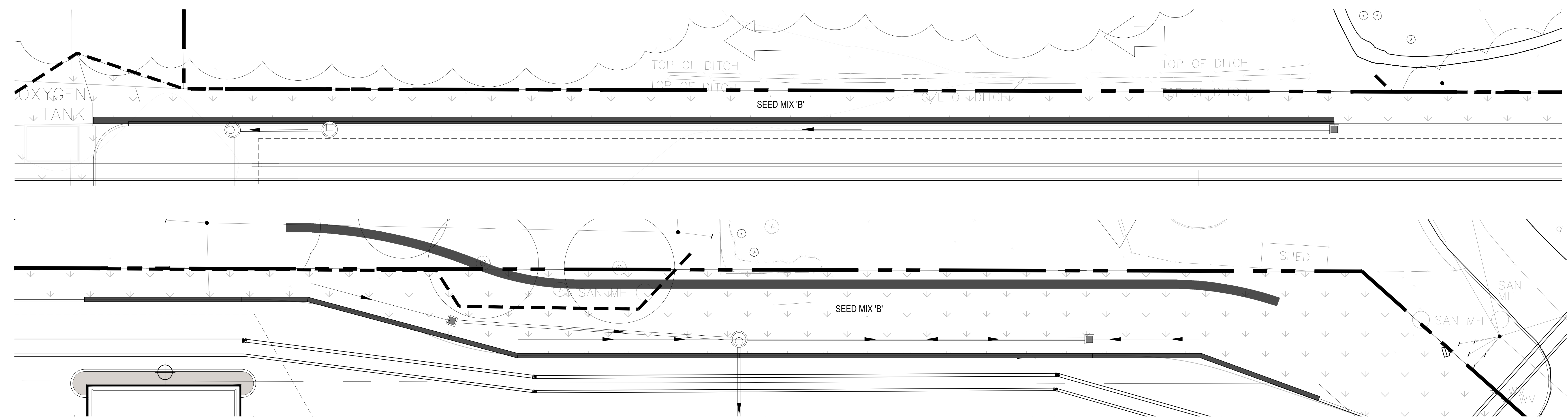


- GENERAL NOTES:**
1. DRAWINGS NOT TO BE USED FOR CONSTRUCTION UNLESS AUTHORIZED BY THE LANDSCAPE ARCHITECT
 2. CONTRACTOR SHALL REPORT ANY DISCREPANCIES BETWEEN THE DRAWINGS AND SITE CONDITIONS PRIOR TO COMMENCEMENT OF THE WORK
 3. ALL UTILITY LOCATES ARE THE RESPONSIBILITY OF THE CONTRACTOR. HANDS OFF WITHIN THE LIMITS RECOMMENDED BY THE SERVICE UTILITY. UTILITY CONFLICTS WITH PROPOSED TREE LOCATIONS MUST BE REPORTED IMMEDIATELY TO THE LANDSCAPE ARCHITECT
 4. BASE DRAWINGS PROVIDED BY DIAMOND SCHMITT ARCHITECTS
 5. VEGETATION INVENTORY BY GSP GROUP INC.
 6. LANDSCAPE DRAWINGS SHOW ENGINEERING INFORMATION FOR DESIGN PURPOSES ONLY. DO NOT CONSTRUCT ENGINEERING WORKS FROM THESE DRAWINGS.

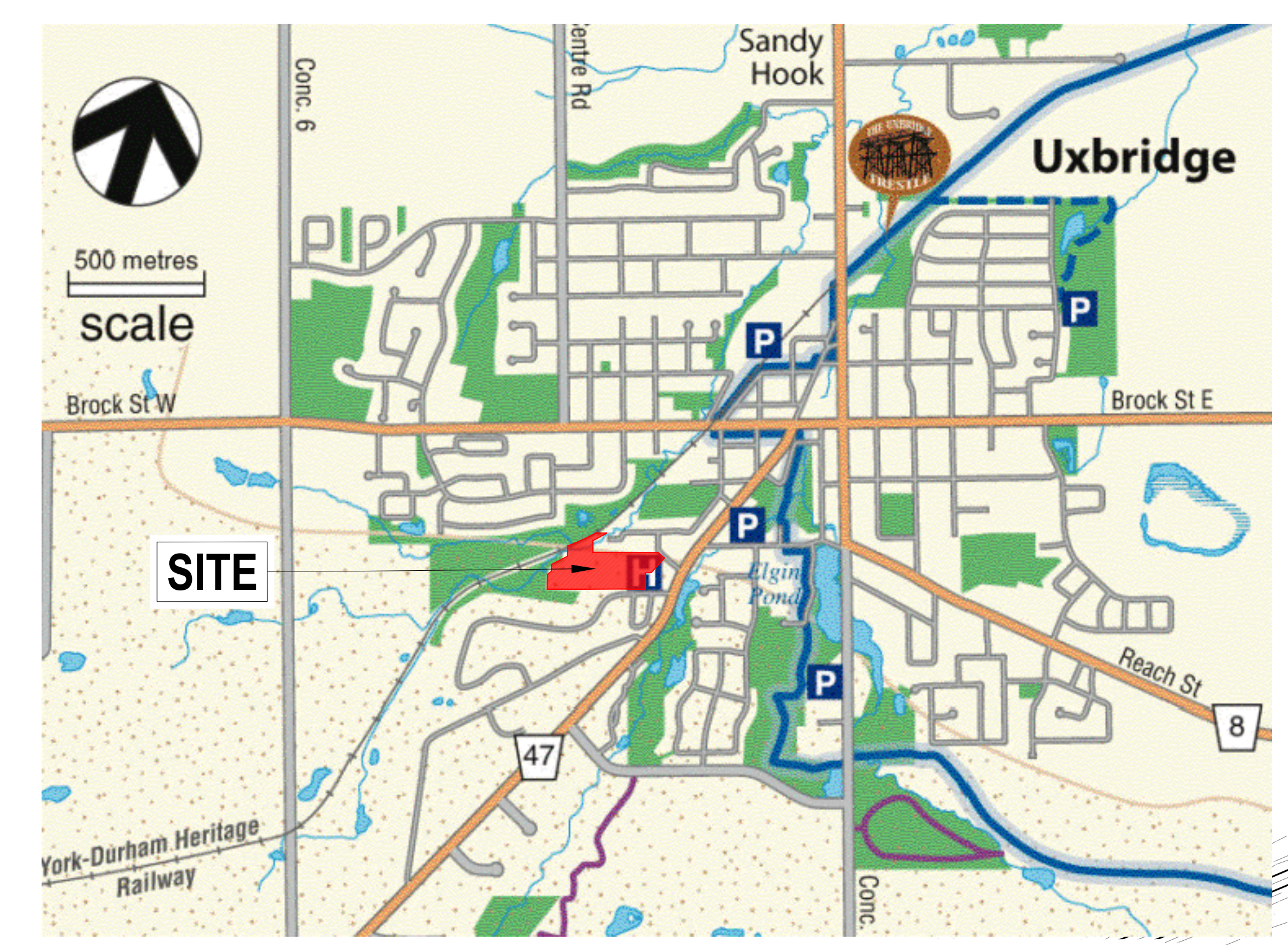
- LEGEND**
- EXISTING TREES
 - PROPOSED DECIDUOUS TREES
 - PROPOSED CONIFEROUS TREES
 - PLANTING BED
 - SOD
 - SEED MIX 'A'
 - SEED MIX 'B'
 - CONCRETE PAVING
 - DECORATIVE CONCRETE PAVING
 - GRAVEL PATH
 - BENCH
 - BIKE RACK
 - SAFETY BOLLARD
 - EXTENT OF BIOSWALE
 - PROPERTY BOUNDARY

ISSUED

NO.	DATE	DESCRIPTION
1	2024-04-01	Issued for Schematic Design Coordination
2	2024-04-08	Issued for MCH Draft Submission
3	2024-05-02	Issued for Stage 2.1 Block Schematics
4	2024-07-12	Issued for Construction
5	2024-07-31	Issued for SOD/SOD
6	2024-09-19	Issued for Site Plan Approval
7	2024-11-08	Issued for Site Plan Approval

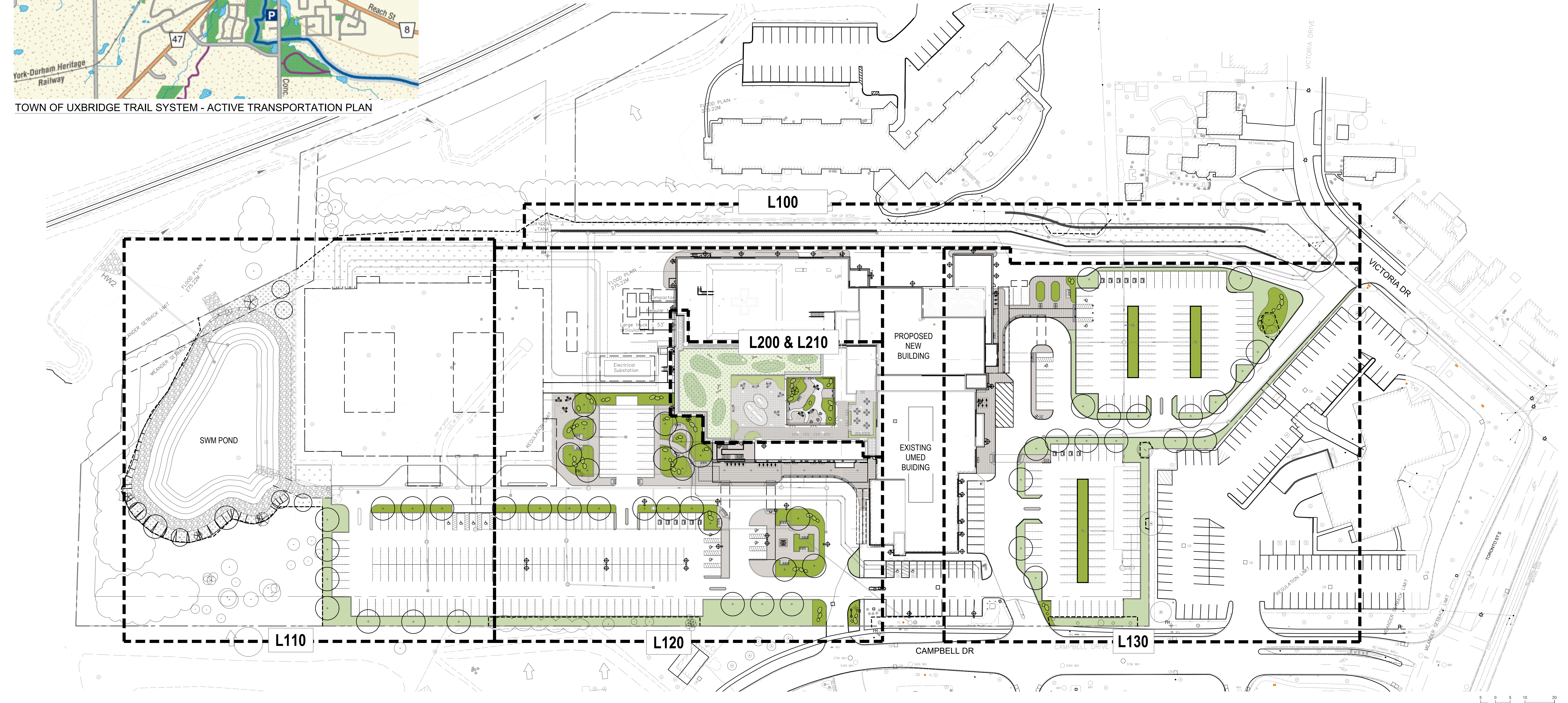


NORTH WALL ENLARGEMENT PLAN



- Legend**
- Trans Canada Trail
 - Trans Canada Trail Access
 - Oak Ridges Trail
 - Countryside Preserve
 - forest trail
 - Municipal Parklands
 - Provincial Lands
 - East Duffins Headwaters
 - Durham Region Forests
 - Parking, Hospital
 - Regional Road
 - Oak Ridges Moraine
 - wetland

NOTE:
PEDESTRIAN CIRCULATION PLAN SHOWING THE EXISTING TRAILS ADJACENT TO THE SITE. NO IMPACTS TO EXISTING TRAILS DURING OR POST CONSTRUCTION. ON-SITE PEDESTRIAN CIRCULATION CONNECTS TO LOCAL SIDEWALKS AT STREET FRONTAGES.



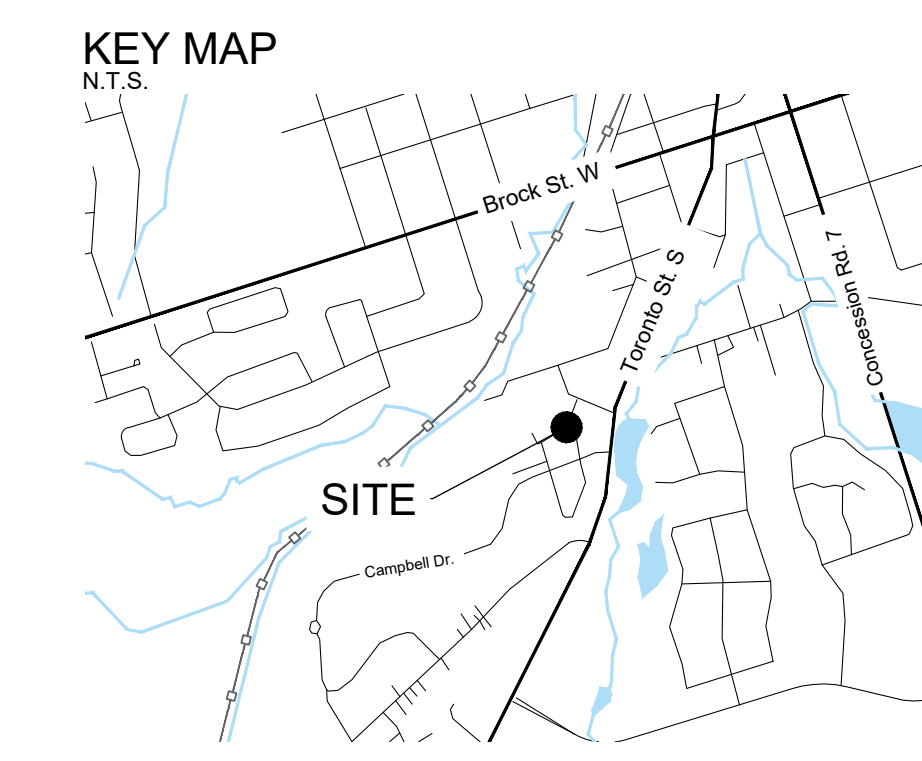
NOT FOR CONSTRUCTION

CONTRACTOR MUST CHECK & VERIFY ALL DIMENSIONS ON THE JOB

DO NOT SCALE DRAWINGS

ALL DRAWINGS, SPECIFICATIONS AND RELATED DOCUMENTS ARE THE COPYRIGHT PROPERTY OF THE ARCHITECT. THESE SHALL BE RETURNED UPON COMPLETION OF THE PROJECT. REPRODUCTION OF DRAWINGS, SPECIFICATIONS AND RELATED DOCUMENTS IN ANY FORM OR MANNER IS PROHIBITED WITHOUT THE WRITTEN PERMISSION OF THE ARCHITECT.

THIS DRAWING IS NOT TO BE USED FOR CONSTRUCTION UNITS, SIGNED BY THE ARCHITECT



GENERAL NOTES:

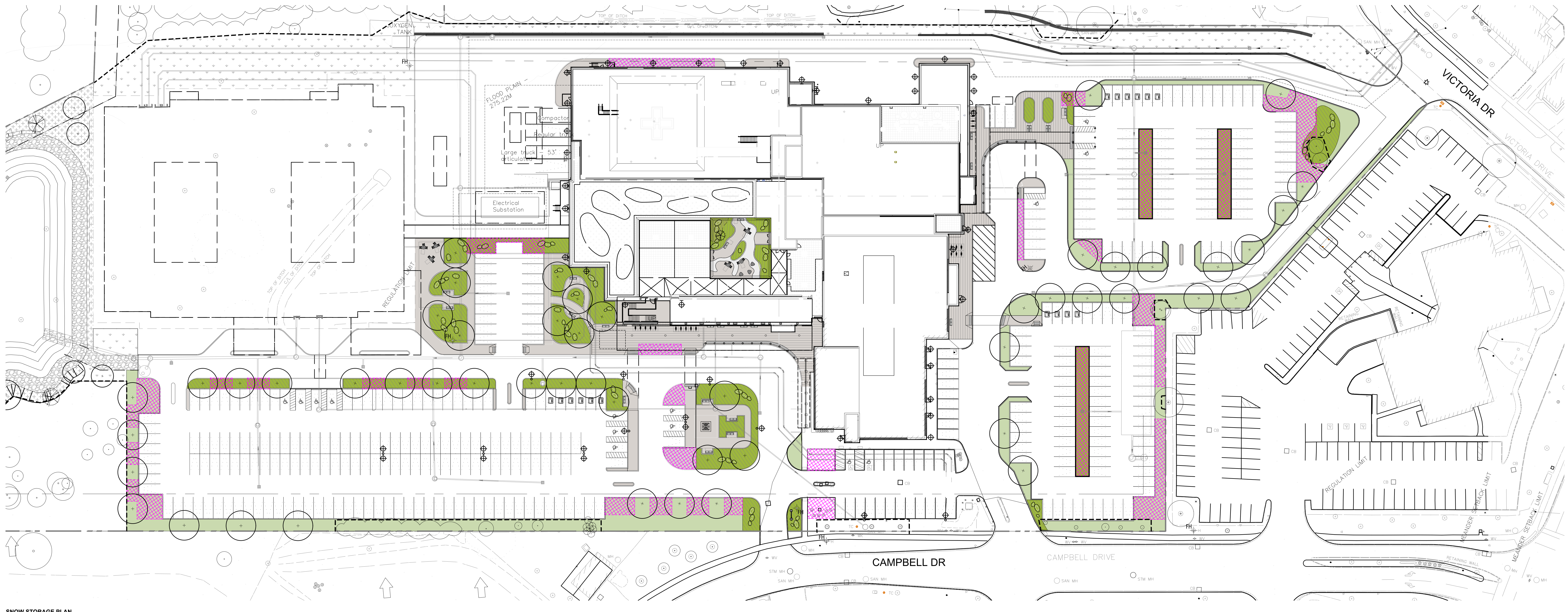
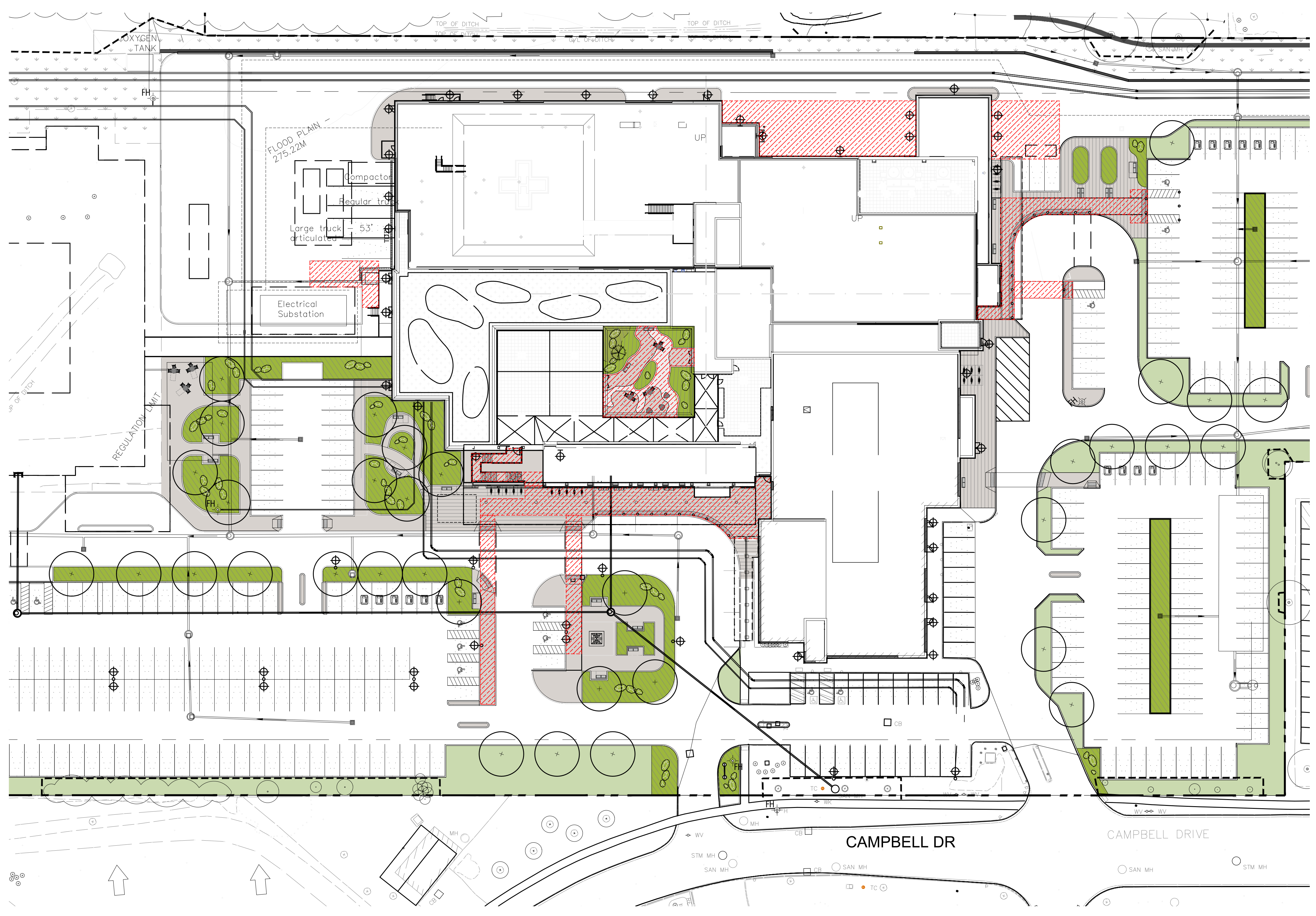
1. DRAWINGS NOT TO BE USED FOR CONSTRUCTION UNLESS AUTHORIZED BY THE LANDSCAPE ARCHITECT
2. CONTRACTOR SHALL REPORT ANY DISCREPANCIES BETWEEN THE DRAWINGS AND SITE CONDITIONS PRIOR TO COMMENCEMENT OF THE WORK
3. ALL UTILITY LOCATES ARE THE RESPONSIBILITY OF THE CONTRACTOR. HANDS WITHIN THE LIMITS RECOMMENDED BY THE SERVICE UTILITY. UTILITY CONFLICTS WITH PROPOSED TREE LOCATIONS MUST BE REPORTED IMMEDIATELY TO THE LANDSCAPE ARCHITECT
4. BASE DRAWINGS PROVIDED BY DIAMOND SCHMITT ARCHITECTS
5. VEGETATION INVENTORY BY GSP GROUP INC.
6. LANDSCAPE DRAWINGS SHOW ENGINEERING INFORMATION FOR DESIGN PURPOSES ONLY. DO NOT CONSTRUCT ENGINEERING WORKS FROM THESE DRAWINGS.

LEGEND

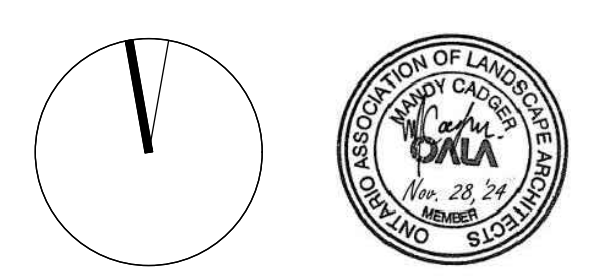
- EXISTING TREES
- PROPOSED DECIDUOUS TREES
- PROPOSED CONIFEROUS TREES
- PLANTING BED
- SOD
- SEED MIX 'A'
- SEED MIX 'B'
- CONCRETE PAVING
- DECORATIVE CONCRETE PAVING
- GRAVEL PATH
- BENCH
- BIKE RACK
- SAFETY BOLLARD
- EXTENT OF BIOSWALE
- PROPERTY BOUNDARY
- SNOW MELT AREA
- SNOW STORAGE AREA

ISSUED

NO.	DATE	DESCRIPTION
1	2024-11-28	Issued for Site Plan Approval



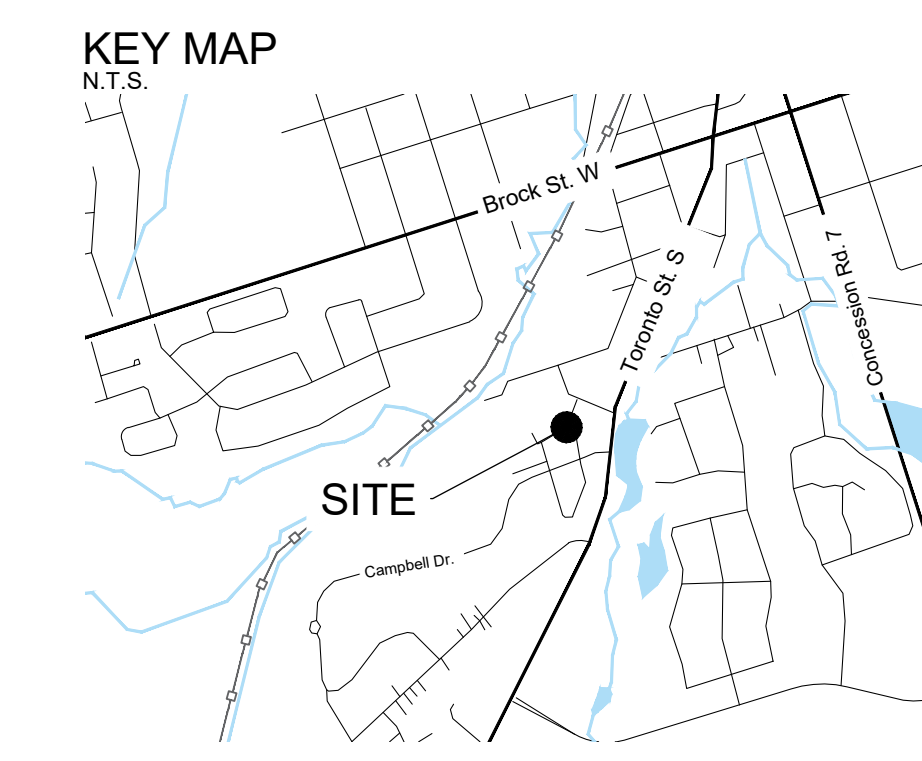
NOT FOR CONSTRUCTION



CONTRACTOR MUST CHECK & VERIFY ALL DIMENSIONS ON THE JOB
DO NOT SCALE DRAWINGS
ALL DRAWINGS, SPECIFICATIONS AND RELATED DOCUMENTS ARE THE COPYRIGHT PROPERTY OF THE ARCHITECT. ANY REUSE OR REPRODUCTION WITHOUT WRITTEN PERMISSION OF THE ARCHITECT IS PROHIBITED.
THIS DRAWING IS NOT TO BE USED FOR CONSTRUCTION UNLESS SIGNED BY THE ARCHITECT



Uxbridge Hospital
PROJECT NO: 23175



- GENERAL NOTES:**
1. DRAWINGS NOT TO BE USED FOR CONSTRUCTION UNLESS AUTHORIZED BY THE LANDSCAPE ARCHITECT.
 2. CONTRACTOR SHALL REPORT ANY DISCREPANCIES BETWEEN THE DRAWINGS AND SITE CONDITIONS PRIOR TO COMMENCEMENT OF THE WORK.
 3. ALL UTILITY LOCATES ARE THE RESPONSIBILITY OF THE CONTRACTOR. HANDS WITHIN THE LIMITS RECOMMENDED BY THE SERVICE UTILITY. UTILITY CONFLICTS WITH PROPOSED TREE LOCATIONS MUST BE REPORTED IMMEDIATELY TO THE LANDSCAPE ARCHITECT.
 4. BASE DRAWINGS PROVIDED BY DIAMOND SCHMITT ARCHITECTS.
 5. VEGETATION INVENTORY BY GSP GROUP INC.
 6. LANDSCAPE DRAWINGS SHOW ENGINEERING INFORMATION FOR DESIGN PURPOSES ONLY. DO NOT CONSTRUCT ENGINEERING WORKS FROM THESE DRAWINGS.

- LEGEND**
- EXISTING TREES
 - PROPOSED DECIDUOUS TREES
 - PROPOSED CONIFEROUS TREES
 - PLANTING BED
 - SOD
 - SEED MIX 'A'
 - CONCRETE PAVING
 - DECORATIVE CONCRETE PAVING
 - GRAVEL PATH
 - BENCH
 - BIKE RACK
 - SAFETY BOLLARD
 - EXTENT OF BIOSWALE
 - PROPERTY BOUNDARY

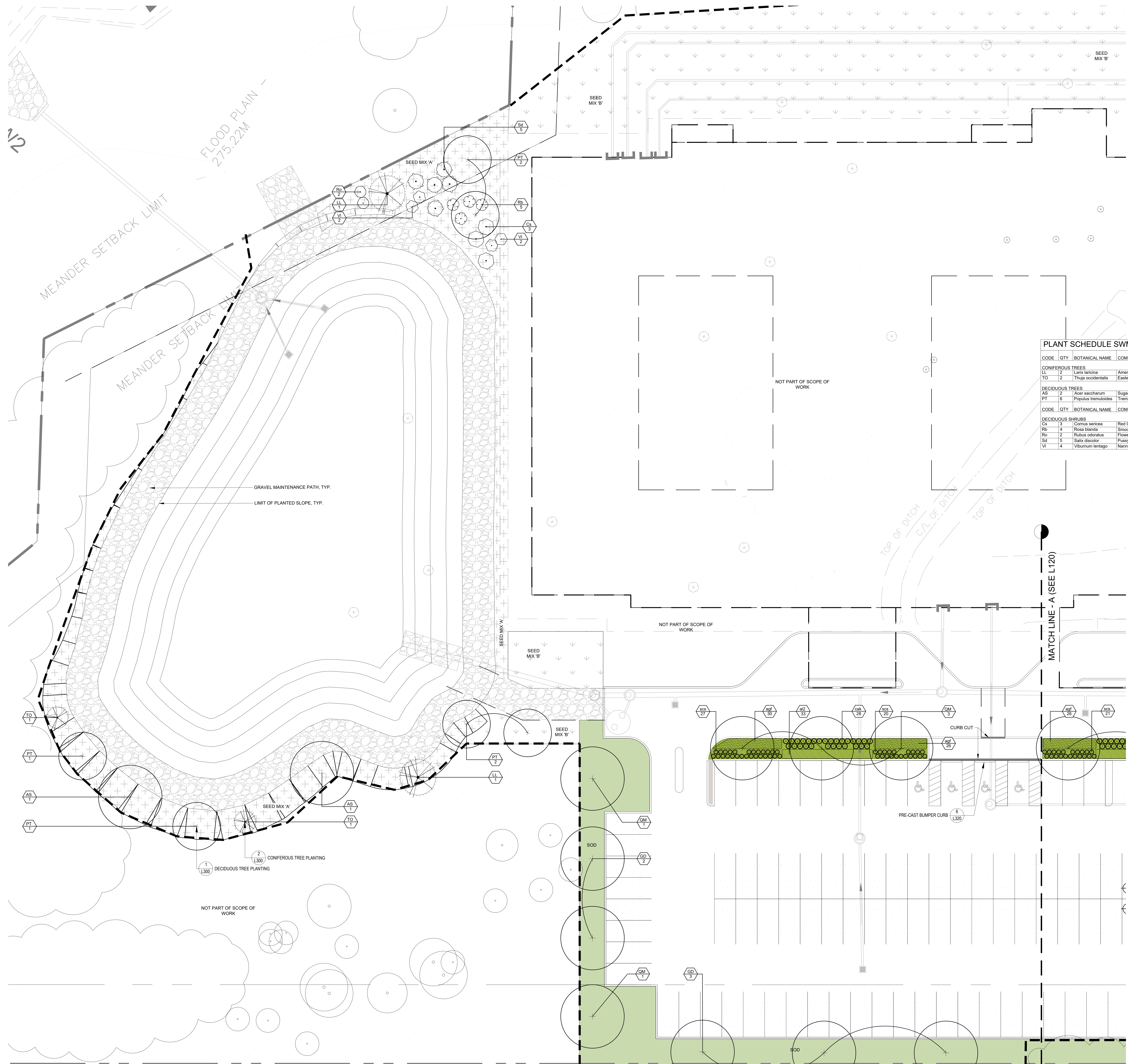
ISSUED

NO.	DATE	DESCRIPTION
1	2024-04-01	Issued for Schematic Design Coding
2	2024-04-08	Issued for MCH Draft Submission
3	2024-05-02	Issued for Stage 2.1 Block Schematics
4	2024-07-12	Issued for Coordination
5	2024-07-31	Issued for 50% ITO
6	2024-09-19	Issued for Site Plan Approval
7	2024-11-08	Issued for Site Plan Approval

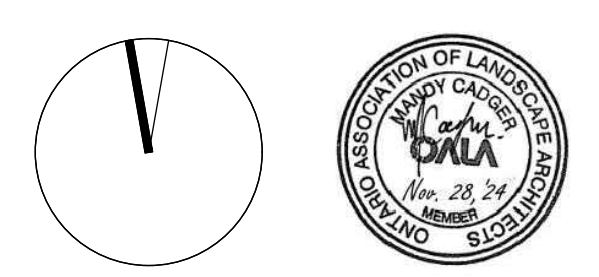
PLANT SCHEDULE SWM POND

CODE	QTY	BOTANICAL NAME	COMMON NAME	SIZE	CONTAINER	REMARKS
CONIFEROUS TREES						
LL	2	Larix laricina	American Larch	200cm Ht.	W.B.	Native
TO	2	Thuja occidentalis	Eastern White Cedar	200cm Ht.	W.B.	Native
DECIDUOUS TREES						
AS	2	Acer saccharum	Sugar Maple	60mm Cal.	W.B.	Native
PT	6	Populus tremuloides	Trembling Aspen	200cm Ht.	10 gal.	Native
DECIDUOUS SHRUBS						
Cs	3	Cornus sericea	Red Osier Dogwood	50cm	3 gal.	2 m Native
Rb	4	Rubus laudatus	Smooth Rose	---	2 gal.	1.5 m Native
Rb	2	Rubus odoratus	Flowering Raspberry	---	2 gal.	1.5 m Native
Sd	5	Salix discolor	Pussy Willow	60cm	3 gal.	2 m Native
Vi	4	Viburnum lentago	Nannyberry	50cm	3 gal.	1.5 m Native

NOTE:
1. PARKING LOT PLANTING SCHEDULE REFER TO L100.



NOT FOR CONSTRUCTION



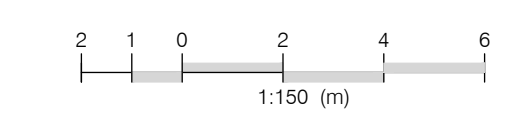
CONTRACTOR MUST CHECK & VERIFY ALL DIMENSIONS ON THE JOB.
DO NOT SCALE DRAWINGS.
ALL DRAWINGS, SPECIFICATIONS AND RELATED DOCUMENTS ARE THE COPYRIGHT PROPERTY OF THE ARCHITECT. THIS MUST BE CLEARLY INDICATED IN ANY REPRODUCTION OF DRAWINGS, SPECIFICATIONS AND RELATED DOCUMENTS IN PART OR IN WHOLE OR OTHERWISE WITHOUT THE WRITTEN PERMISSION OF THE ARCHITECT.
THIS DRAWING IS NOT TO BE USED FOR CONSTRUCTION UNTIL SIGNED BY THE ARCHITECT.

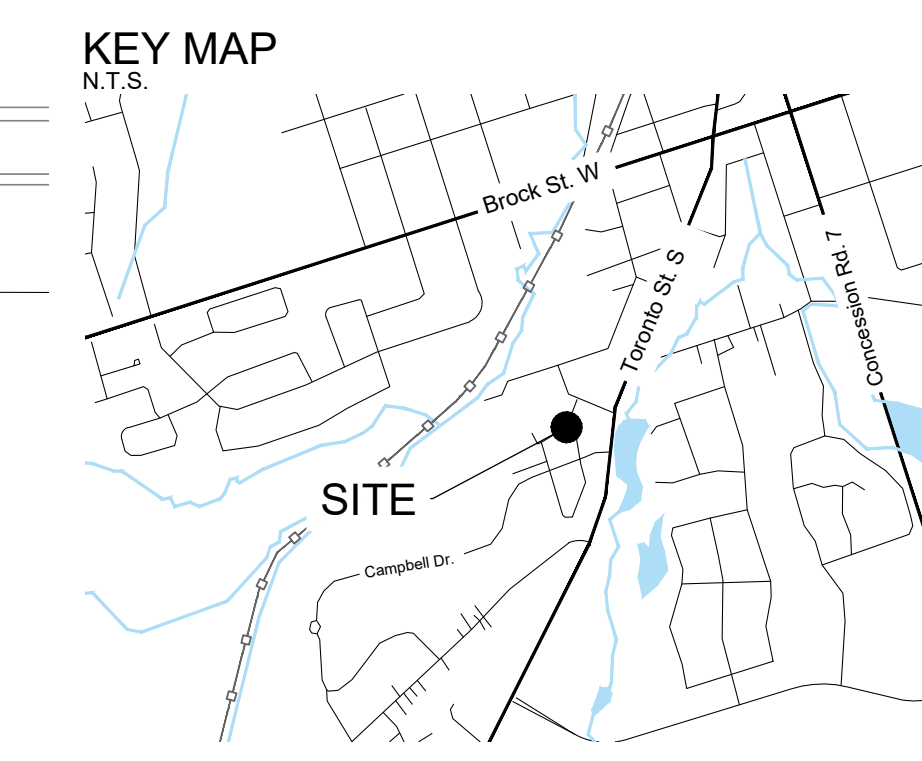


Uxbridge Hospital
PROJECT NO. 23175

Landscape Site
Layout and Planting Plan

1 : 150
L110





- GENERAL NOTES:**
1. DRAWINGS NOT TO BE USED FOR CONSTRUCTION UNLESS AUTHORIZED BY THE LANDSCAPE ARCHITECT.
 2. CONTRACTOR SHALL REPORT ANY DISCREPANCIES BETWEEN THE DRAWINGS AND SITE CONDITIONS PRIOR TO COMMENCEMENT OF THE WORK.
 3. ALL UTILITY LOCATES ARE THE RESPONSIBILITY OF THE CONTRACTOR. HANDS OFF WITHIN THE LIMITS RECOMMENDED BY THE SERVICE UTILITY. UTILITY CONFLICTS WITH PROPOSED TREE LOCATIONS MUST BE REPORTED IMMEDIATELY TO THE LANDSCAPE ARCHITECT.
 4. BASE DRAWING PROVIDED BY DIAMOND SCHMITT ARCHITECTS.
 5. VEGETATION INVENTORY BY GSP GROUP INC.
 6. LANDSCAPE DRAWINGS SHOW ENGINEERING INFORMATION FOR DESIGN PURPOSES ONLY. DO NOT CONSTRUCT ENGINEERING WORKS FROM THESE DRAWINGS.

LEGEND

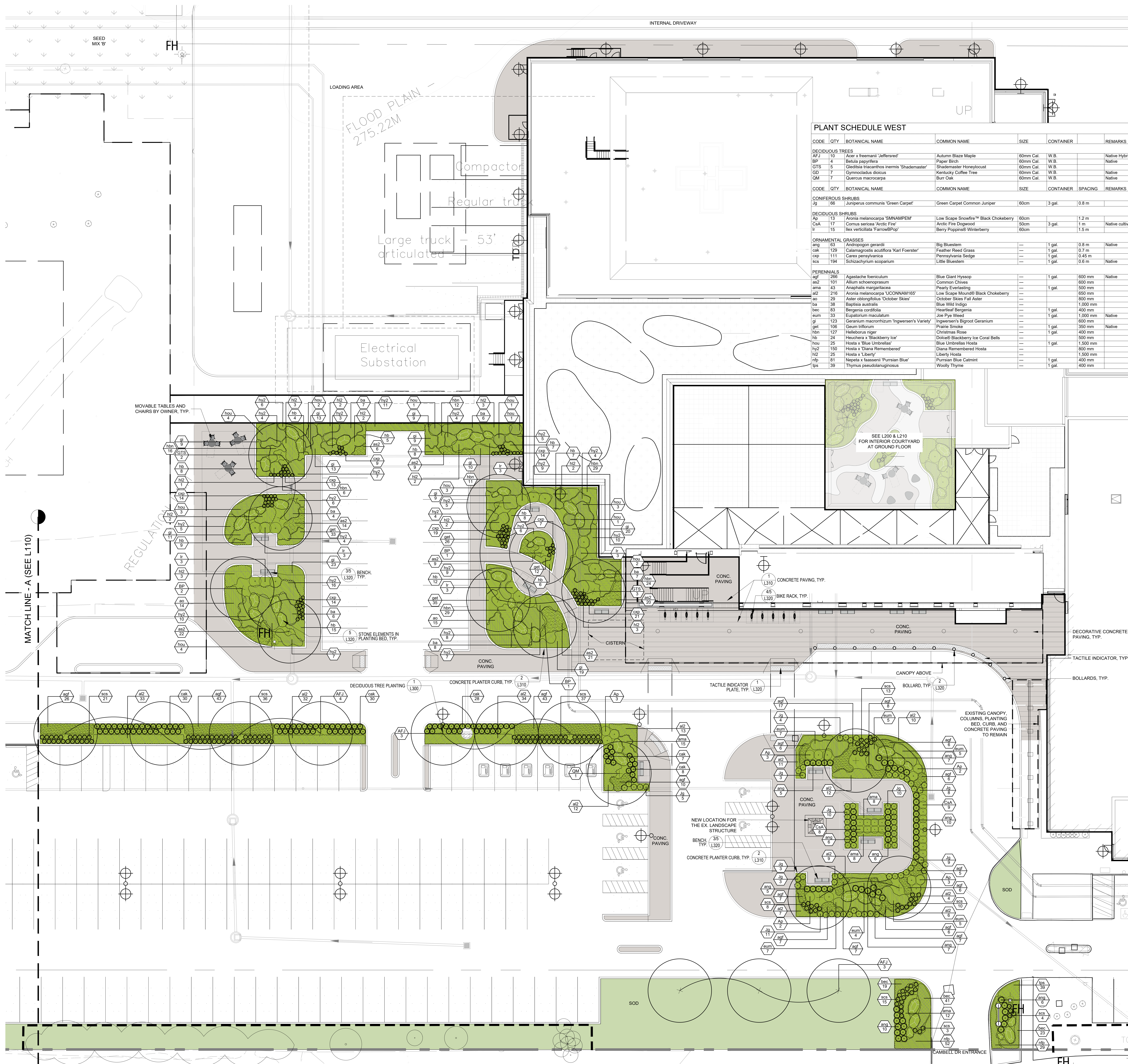
- EXISTING TREES
- PROPOSED DECIDUOUS TREES
- PROPOSED CONIFEROUS TREES
- PLANTING BED
- SOD
- SEED MIX 'A'
- SEED MIX 'B'
- CONCRETE PAVING
- DECORATIVE CONCRETE PAVING
- GRAVEL PATH
- BENCH
- BIKE RACK
- SAFETY BOLLARD
- EXTENT OF BIOSWALE
- PROPERTY BOUNDARY

ISSUED

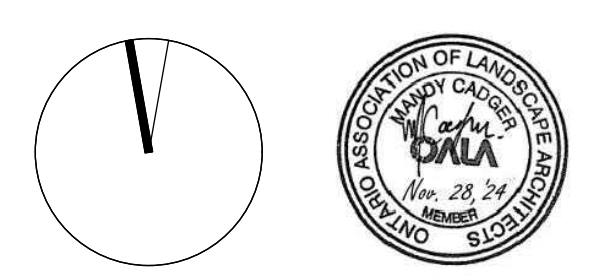
NO.	DATE	DESCRIPTION
1	2024-04-01	Issued for Schematic Design Coding
2	2024-06-28	Issued for MCHN Draft Submission
3	2024-05-02	Issued for Stage 2.1 Block Schematics
4	2024-07-12	Issued for Coordination
5	2024-07-31	Issued for 50%DD
6	2024-09-19	Issued for Site Plan Approval
7	2024-11-28	Issued for Site Plan Approval

PLANT SCHEDULE WEST

CODE	QTY	BOTANICAL NAME	COMMON NAME	SIZE	CONTAINER	SPACING	REMARKS
DECIDUOUS TREES							
AF-J	10	Acer x freemani 'Jeffersred'	Autumn Blaze Maple	60mm Cal.	W.B.		Native Hybrid
BP	4	Betula papyrifera	Paper Birch	60mm Cal.	W.B.		Native
GTS	5	Gleditsia triacanthos inermis 'Shademaster'	Shademaster Honeylocust	60mm Cal.	W.B.		
GD	7	Gymnocladus dioica	Kentucky Coffee Tree	60mm Cal.	W.B.		Native
QM	7	Quercus macrocarpa	Burr Oak	60mm Cal.	W.B.		Native
CONIFEROUS SHRUBS							
Jg	66	Juniperus communis 'Green Carpet'	Green Carpet Common Juniper	60cm	3 gal.	0.8 m	
DECIDUOUS SHRUBS							
Ap	13	Aronia melanocarpa 'NANAMPEM'	Low Scape Arrowfin™ Black Chokeberry	60cm		1.2 m	
CAK	17	Cornus sericea 'Acidic Fire'	Arctic Fire Dogwood	50cm	3 gal.	1 m	Native cultivar
lr	15	Ilex verticillata 'FarrowBPop'	Berry Poppins® Winterberry	60cm			
ORNAMENTAL GRASSES							
ang	63	Andropogon gerardi	Big Bluestem	---	1 gal.	0.8 m	Native
cah	129	Calamagrostis acutiflora 'Karl Foerster'	Feather Reed Grass	---	1 gal.	0.7 m	
cap	111	Carex pensylvanica	Pennsylvania Sedge	---	1 gal.	0.45 m	
scs	194	Schizachyrium scoparium	Little Bluestem	---	1 gal.	0.8 m	Native
PERENNIALS							
agf	266	Agastache foeniculum	Blue Giant Hyssop	---	1 gal.	600 mm	Native
as2	101	Allium schoenoprasum	Common Chives	---	600 mm		
ama	43	Anaphalis margaritacea	Pearly Everlasting	---	1 gal.	500 mm	
as2	216	Aronia melanocarpa 'UCONNAM165'	Low Scape Mound® Black Chokeberry	---	650 mm		
ao	39	Aster oblongifolius 'October Skies'	October Skies Fall Aster	---	800 mm		
ba	38	Baptisia australis	Blue Wild Indigo	---	1,000 mm		
bec	83	Bergenia cordifolia	Heartleaf Bergenia	---	1 gal.	400 mm	
eum	33	Eupatorium maculatum	Joe Pye Weed	---	1 gal.	1,000 mm	Native
gr	123	Geranium macrorrhizum 'Ingwersen's Variety'	Ingwersen's Bigroot Geranium	---	600 mm		
get	106	Geum triflorum	Prairie Smoke	---	350 mm	Native	
hbn	127	Hebeboron niger	Christmas Rose	---	1 gal.	400 mm	
hb	24	Heuchera x Blackberry Ice'	Dotsey® Blackberry Ice Coral Bells	---	500 mm		
hou	25	Hosta x 'Blue Umbrellas'	Blue Umbrellas Hosta	---	1 gal.	1,500 mm	
hy2	150	Hosta x 'Diana Remembered'	Diana Remembered Hosta	---	800 mm		
hz2	25	Hosta x 'Liberty'	Liberty Hosta	---	1 gal.	1,500 mm	
nfp	81	Nepeta x faassenii 'Pursian Blue'	Pursian Blue Catmint	---	1 gal.	400 mm	
tps	39	Thymus pseudolanuginosus	Woolly Thyme	---	1 gal.	400 mm	



NOT FOR CONSTRUCTION



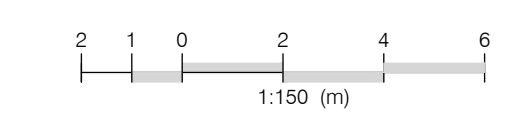
CONTRACTOR MUST CHECK & VERIFY ALL DIMENSIONS ON THE JOB.
DO NOT SCALE DRAWINGS.
ALL DRAWINGS, SPECIFICATIONS AND RELATED DOCUMENTS ARE THE COPYRIGHT PROPERTY OF THE ARCHITECT AND MUST BE USED ONLY FOR THE PROJECT REPRODUCTION OF DRAWINGS, SPECIFICATIONS AND RELATED DOCUMENTS IN PART OR IN WHOLE IS PROHIBITED WITHOUT THE WRITTEN PERMISSION OF THE ARCHITECT.
THIS DRAWING IS NOT TO BE USED FOR CONSTRUCTION UNITS, SIGNED BY THE ARCHITECT.



Uxbridge Hospital
PROJECT NO: 23175

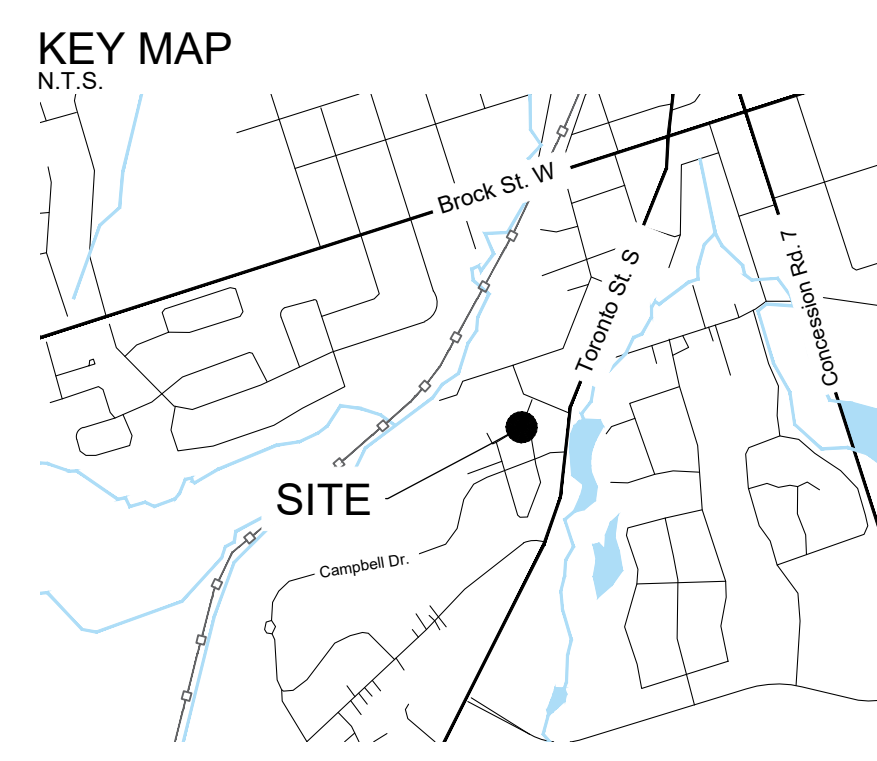
Landscape Site
Layout and Planting Plan
1:150

L120



GENERAL NOTES:

1. DRAWINGS NOT TO BE USED FOR CONSTRUCTION UNLESS AUTHORIZED BY THE LANDSCAPE ARCHITECT.
2. CONTRACTOR SHALL REPORT ANY DISCREPANCIES BETWEEN THE DRAWINGS AND SITE CONDITIONS PRIOR TO COMMENCEMENT OF THE WORK.
3. ALL UTILITY LOCATES ARE THE RESPONSIBILITY OF THE CONTRACTOR. HANDS OFF WITHIN THE LIMITS RECOMMENDED BY THE SERVICE UTILITY. UTILITY CONFLICTS WITH PROPOSED TREE LOCATIONS MUST BE REPORTED IMMEDIATELY TO THE LANDSCAPE ARCHITECT.
4. BASE DRAWINGS PROVIDED BY DIAMOND SCHMITT ARCHITECTS.
5. VEGETATION INVENTORY BY GSP GROUP INC.
6. LANDSCAPE DRAWINGS SHOW ENGINEERING INFORMATION FOR DESIGN PURPOSES ONLY. DO NOT CONSTRUCT ENGINEERING WORKS FROM THESE DRAWINGS.



- LEGEND**
- EXISTING TREES
 - PROPOSED DECIDUOUS TREES
 - PROPOSED CONIFEROUS TREES
 - PLANTING BED
 - SOD
 - SEED MIX 'A'
 - SEED MIX 'B'
 - CONCRETE PAVING
 - DECORATIVE CONCRETE PAVING
 - GRAVEL PATH
 - BENCH
 - BIKE RACK
 - SAFETY BOLLARD
 - EXTENT OF BIOSWALE
 - PROPERTY BOUNDARY

ISSUED

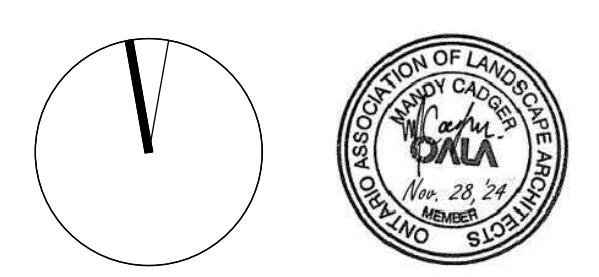
NO.	DATE	DESCRIPTION
1	2024-04-01	Issued for Schematic Design Coordination
2	2024-06-08	Issued for MCH Draft Submission
3	2024-05-02	Issued for Stage 2.1 Block Schematics
4	2024-07-12	Issued for Coordination
5	2024-07-31	Issued for SOD/SOD
6	2024-09-19	Issued for Site Plan Approval
7	2024-11-08	Issued for Site Plan Approval



PLANT SCHEDULE EAST

CODE	QTY	BOTANICAL NAME	COMMON NAME	SIZE	CONTAINER	SPACING	REMARKS
DECIDUOUS TREES							
AFJ	5	Acer x freemanii 'Jeffersred'	Autumn Blaze Maple	60mm Cal.	W.B.		Native Hybrid
GTIS	8	Gleditsia triacanthos inermis 'Shademaster'	Shademaster Honeylocust	60mm Cal.	W.B.		Native
QB	5	Quercus bicolor	Swamp White Oak	60mm Cal.	W.B.		Native
CONIFEROUS SHRUBS							
ng	50	Juniperus communis 'Green Carpet'	Green Carpet Common Juniper	60cm	3 gal.	0.8 m	
DECIDUOUS SHRUBS							
CsA	13	Cornus sericea 'Arctic Fire'	Arctic Fire Dogwood	50cm	3 gal.	1 m	Native cultivar
ORNAMENTAL GRASSES							
ang	133	Andropogon gerardii	Big Bluestem	---	1 gal.	0.8 m	Native
scs	52	Schizachyrium scoparium	Little Bluestem	---	1 gal.	0.8 m	Native
sph	88	Sporobolus heterolepis	Prarie Dropseed	---	1 gal.	0.8 m	Native
PERENNIALS							
ama	174	Anaphalis margaritacea	Pearly Everlasting	---	1 gal.	500 mm	
bec	132	Bergenia cordifolia	Heartleaf Bergenia	---	1 gal.	400 mm	
cal	14	Coreopsis lanceolata	Lanceleaf Tickseed	---	1 gal.	600 mm	Native
get	24	Geum triflorum	Prarie Smoke	---	1 gal.	350 mm	Native
mol	2	Monarda fistulosa	Bergamot	---	1 gal.	800 mm	Native
nfp	484	Nepeta x faassenii 'Purrsian Blue'	Purrsian Blue Catmint	---	1 gal.	400 mm	
nuf	132	Rudbeckia hirta 'Goldsturm'	Black-Eyed Susan	---	1 gal.	500 mm	

NOT FOR CONSTRUCTION



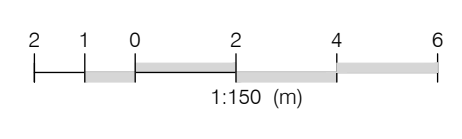
CONTRACTOR MUST CHECK & VERIFY ALL DIMENSIONS ON THE JOB.
DO NOT SCALE DRAWINGS.
ALL DRAWINGS, SPECIFICATIONS AND RELATED DOCUMENTS ARE THE COPYRIGHT PROPERTY OF THE ARCHITECT AND MUST BE USED AND HANDLED WITH CARE. REPRODUCTION OF DRAWINGS, SPECIFICATIONS AND RELATED DOCUMENTS IN PART OR IN WHOLE IS FORBIDDEN WITHOUT THE WRITTEN PERMISSION OF THE ARCHITECT.

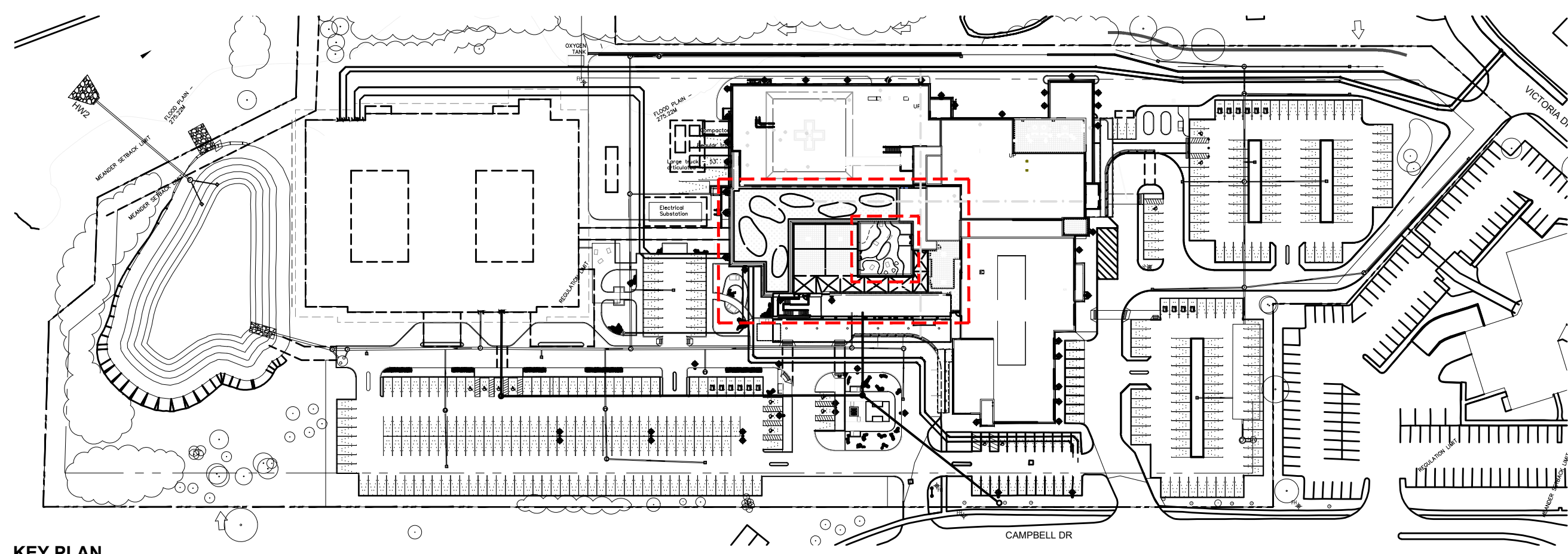


Uxbridge Hospital
PROJECT NO: 23175

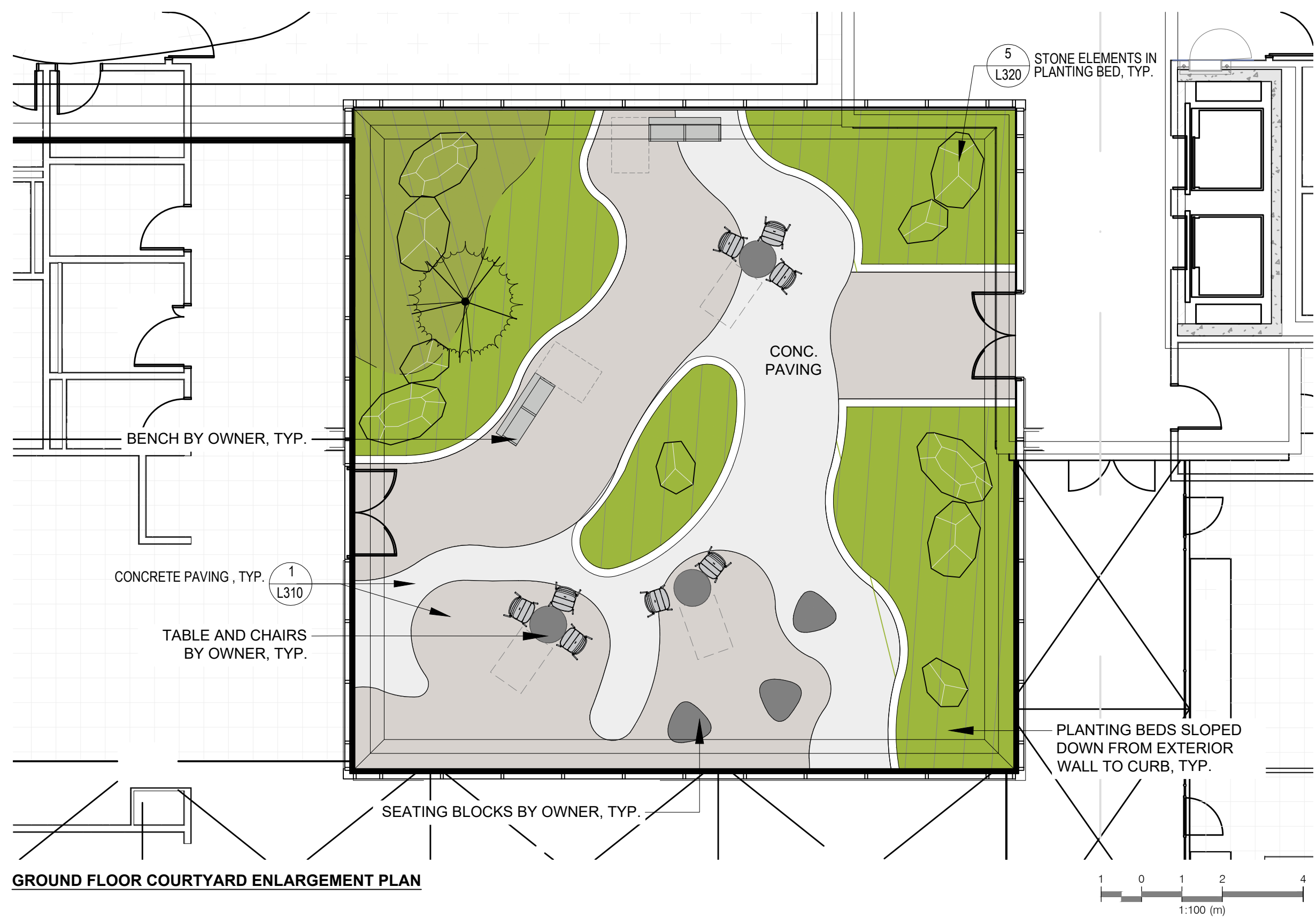
Landscape Site
Layout and Planting Plan
1:150

L130





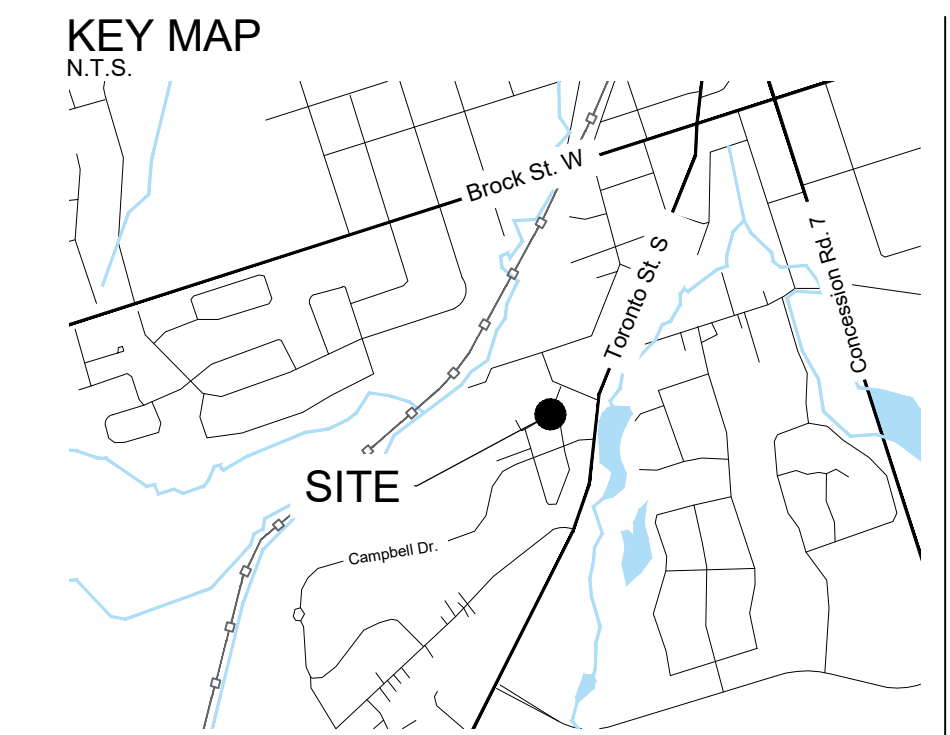
KEY PLAN



GROUND FLOOR COURTYARD ENLARGEMENT PLAN



ROOF TERRACE PLAN



LEGEND

- PROPOSED DECIDUOUS TREES
- PLANTING BED
- EXTENSIVE GREEN ROOF
- INTENSIVE GREEN ROOF
- CONCRETE PAVING
- PAVER ON PEDESTAL (ALTERNATIVE: CONCRETE PAVING)
- PAVER ON PEDESTAL w/ SNOW MELT SYSTEM
- STONE BALLAST
- BENCH
- TABLE AND CHAIRS
- HARVEST TABLE AND SEATING
- ALUMINUM PRIVACY PANEL

diamond schmitt
GSP group

GENERAL NOTES:

1. DRAWINGS NOT TO BE USED FOR CONSTRUCTION UNLESS AUTHORIZED BY THE LANDSCAPE ARCHITECT
2. CONTRACTOR SHALL REPORT ANY DISCREPANCIES BETWEEN THE DRAWINGS AND SITE CONDITIONS PRIOR TO COMMENCEMENT OF THE WORK
3. ALL UTILITY LOCATES ARE THE RESPONSIBILITY OF THE CONTRACTOR. HANDS OFF WITHIN THE LIMITS RECOMMENDED BY THE SERVICE UTILITY. UTILITY CONFLICTS WITH PROPOSED TREE LOCATIONS MUST BE REPORTED IMMEDIATELY TO THE LANDSCAPE ARCHITECT
4. BASE DRAWINGS PROVIDED BY DIAMOND SCHMITT ARCHITECTS.
5. VEGETATION INVENTORY BY GSP GROUP INC.
6. LANDSCAPE DRAWINGS SHOW ENGINEERING INFORMATION FOR DESIGN PURPOSES ONLY. DO NOT CONSTRUCT ENGINEERING WORKS FROM THESE DRAWINGS.

ISSUED

NO.	DATE	DESCRIPTION
1	2024-04-01	Issued for Schematic Design Coordination
2	2024-04-08	Issued for MCH Draft Submission
3	2024-05-02	Issued for Stage 2.1 Block Schematics
4	2024-07-12	Issued for Coordination
5	2024-07-31	Issued for 50%DD
6	2024-09-19	Issued for Site Plan Approval
7	2024-11-08	Issued for Site Plan Approval

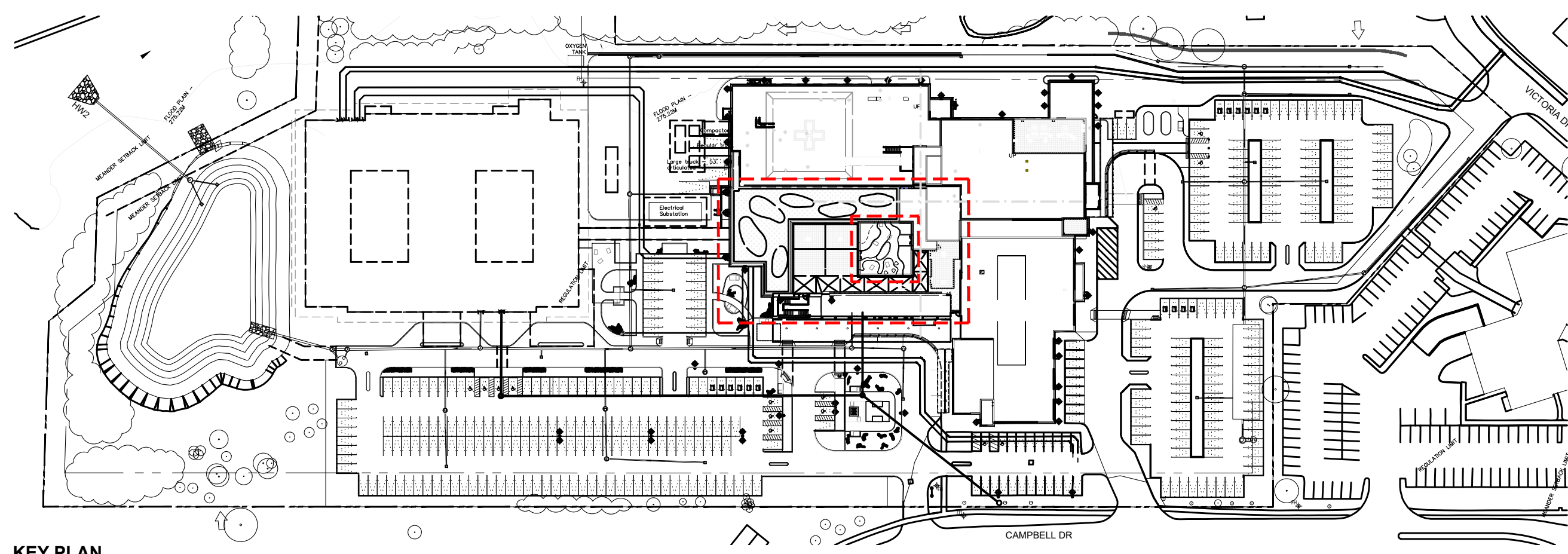
NOT FOR CONSTRUCTION



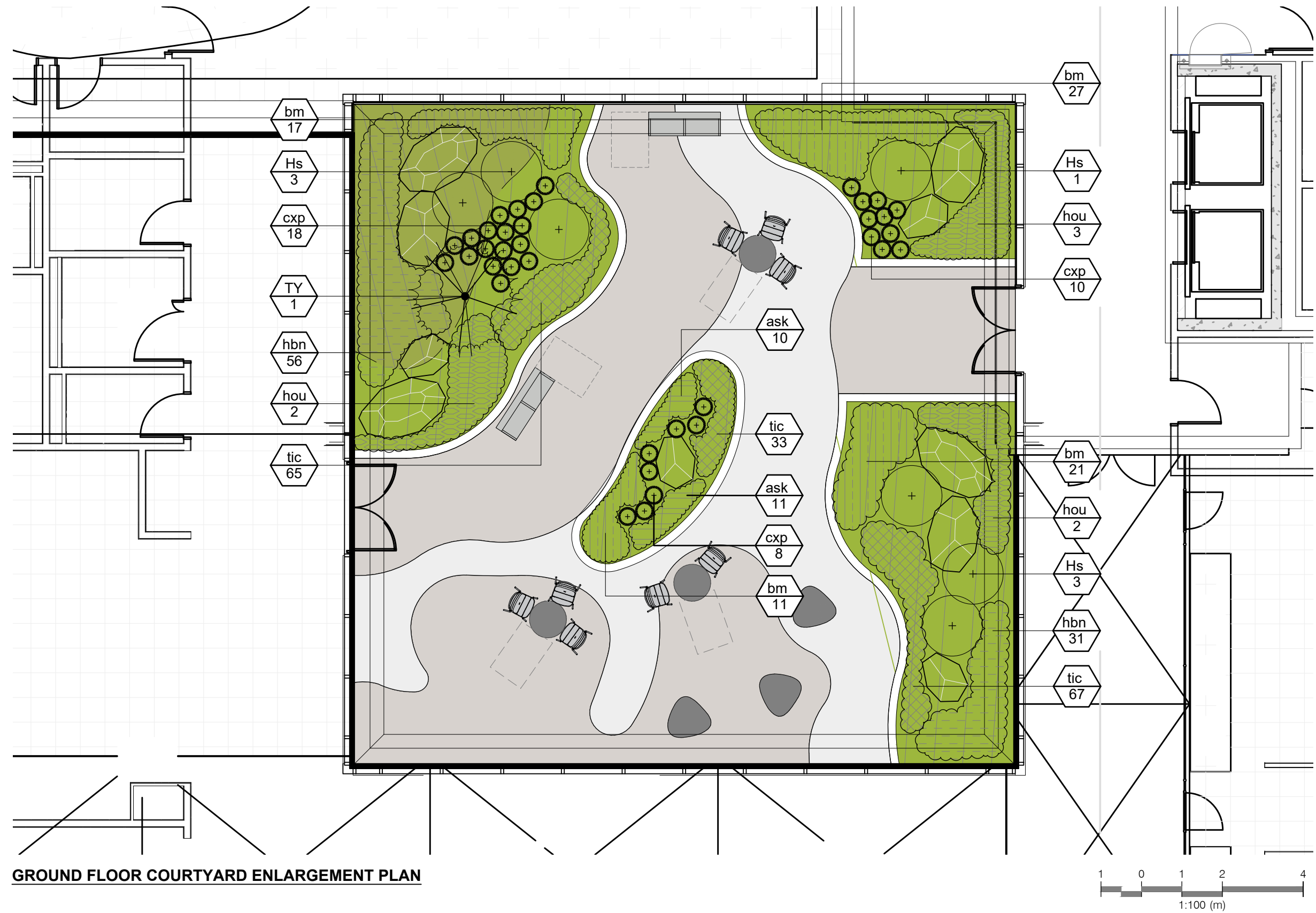
CONTRACTOR MUST CHECK & VERIFY ALL DIMENSIONS ON THE JOB. DO NOT SCALE DRAWINGS. ALL DRAWINGS, SPECIFICATIONS AND RELATED DOCUMENTS ARE THE COPYRIGHT PROPERTY OF THE ARCHITECT AND MUST BE USED AND HANDLED AS SUCH. REPRODUCTION OF DRAWINGS, SPECIFICATIONS AND RELATED DOCUMENTS IN PART OR IN WHOLE IS FORBIDDEN WITHOUT THE WRITTEN PERMISSION OF THE ARCHITECT. THIS DRAWING IS NOT TO BE USED FOR CONSTRUCTION UNLESS SIGNED BY THE ARCHITECT.



Uxbridge Hospital
PROJECT NO: 23175



KEY PLAN



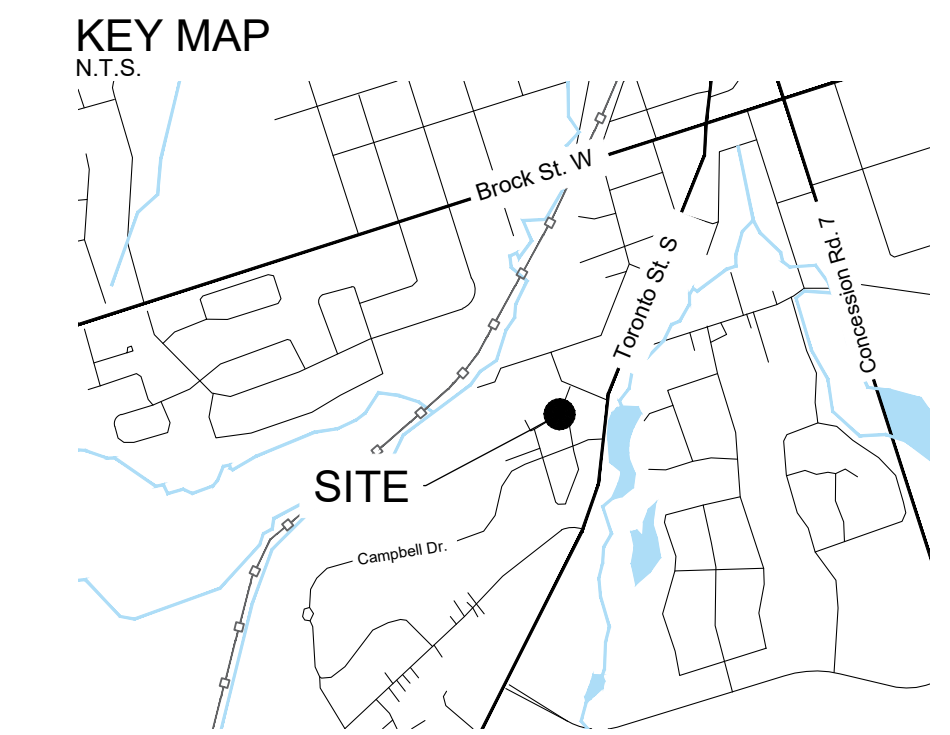
GROUND FLOOR COURTYARD ENLARGEMENT PLAN

PLANT SCHEDULE COURTYARD

CODE	QTY	BOTANICAL NAME	COMMON NAME	SIZE	CONTAINER	SPACING	REMARKS
CONIFEROUS TREES							
TY	1	<i>Thuja occidentalis</i> 'Yellow Ribbon'	Yellow Ribbon Arborvitae	150cm Ht.	BBC		
DECIDUOUS SHRUBS							
Hs	17	<i>Hydrangea quercifolia</i> 'Sike's Dwarf'	Sike's Dwarf Oakleaf Hydrangea	60cm		1.5 m	
ORNAMENTAL GRASSES							
cap	35	<i>Carex pennsylvanica</i>	Pennsylvania Sedge	---	1 gal.	0.45 m	
PERENNIALS							
ask	21	<i>Astilbe simplicifolia</i> 'Key West'	Key West Star Astilbe	---	2 gal.	350 mm	
bm	76	<i>Brunnera macrophylla</i> 'Alexander's Great'	Alexander's Great Siberian Bugloss	---	1 gal.	450 mm	
hon	87	<i>Hebeboenus niger</i>	Christmas Rose	---	1 gal.	400 mm	
ho	7	<i>Hosta x 'Blue Umbrellas'</i>	Blue Umbrellas Hosta	---	1 gal.	1,500 mm	
ic	165	<i>Tiarella cordifolia</i>	Foamflower	---	1 gal.	250 mm	

PLANT SCHEDULE ROOF TERRACE

CODE	QTY	BOTANICAL NAME	COMMON NAME	SIZE	CONTAINER	SPACING	REMARKS
DECIDUOUS SHRUBS							
Cd	4	<i>Cornus sericea</i>	Red Osier Dogwood	50cm	3 gal.	2 m	Native
Ra	6	<i>Rhus aromatica</i>	Fragrant Sumac	50cm	3 gal.	2.5 m	Native
ORNAMENTAL GRASSES							
scs	38	<i>Schizachyrium scoparium</i>	Little Bluestem	---	1 gal.	0.6 m	Native
PERENNIALS							
all	145	<i>Allium cernuum</i>	Nodding Onion	---	1 gal.	300 mm	Native
ama	75	<i>Anagallis margaritacea</i>	Pearly Everlasting	---	1 gal.	500 mm	
ata	72	<i>Aster alpinus</i>	Alpine Aster	---	300 mm		
get	115	<i>Geum triflorum</i>	Prairie Smoke	---	1 gal.	350 mm	Native



LEGEND

- PROPOSED DECIDUOUS TREES
- PLANTING BED
- EXTENSIVE GREEN ROOF
- INTENSIVE GREEN ROOF
- CONCRETE PAVING
- COLOURED CONCRETE PAVING
- PAVES ON PEDESTAL (ALTERNATIVE: CONCRETE PAVING)
- CONCRETE PAVING w/ SNOW MELT AREA
- STONE BALLAST
- BENCH
- TABLE AND CHAIRS
- HARVEST TABLE AND SEATING
- ALUMINUM PRIVACY PANEL

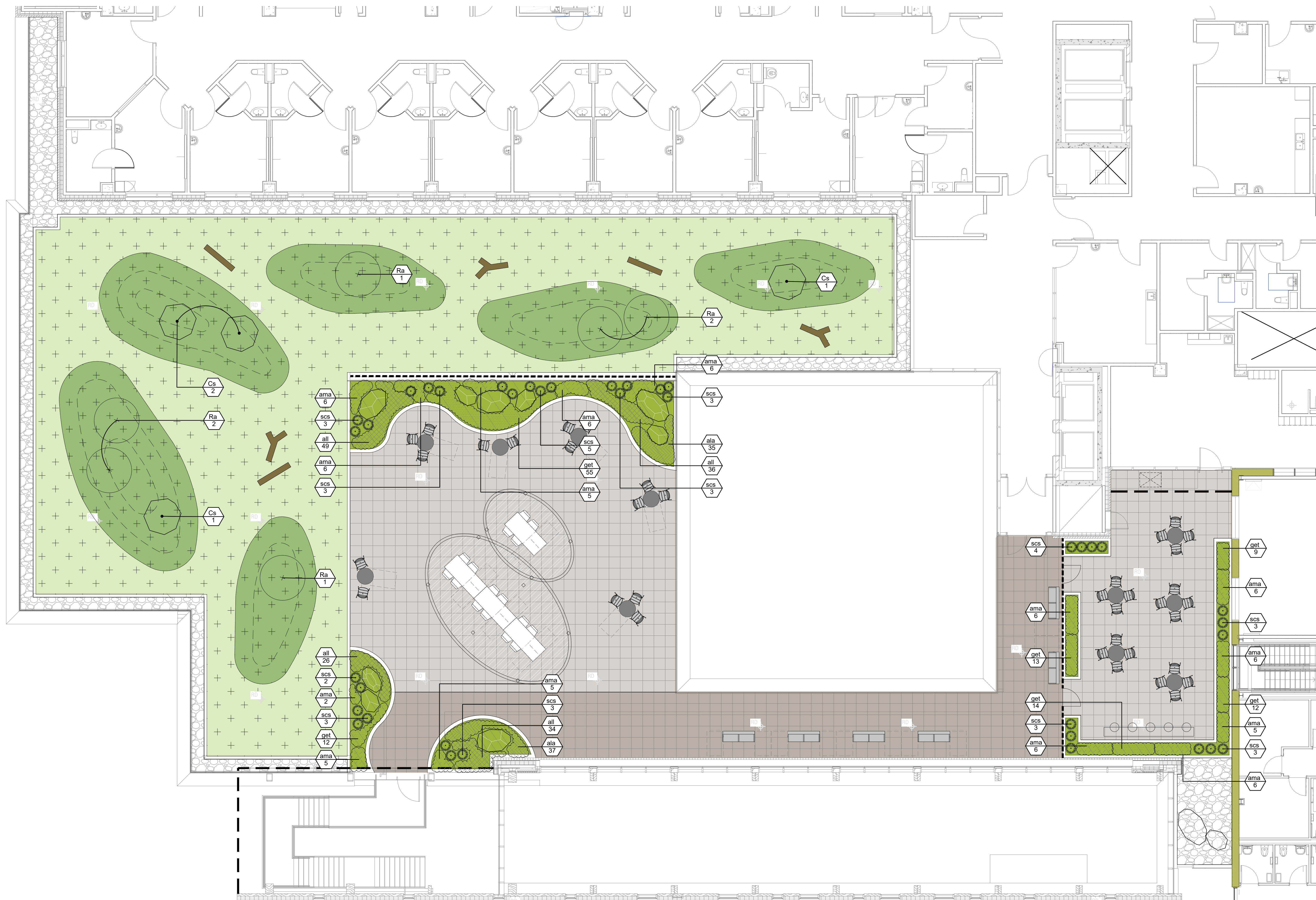
diamond schmitt
GSP group

GENERAL NOTES:

- DRAWINGS NOT TO BE USED FOR CONSTRUCTION UNLESS AUTHORIZED BY THE LANDSCAPE ARCHITECT
- CONTRACTOR SHALL REPORT ANY DISCREPANCIES BETWEEN THE DRAWINGS AND SITE CONDITIONS PRIOR TO COMMENCEMENT OF THE WORK
- ALL UTILITY LOCATES ARE THE RESPONSIBILITY OF THE CONTRACTOR. HANDS OFF WITHIN THE LIMITS RECOMMENDED BY THE SERVICE UTILITY. UTILITY CONFLICTS WITH PROPOSED TREE LOCATIONS MUST BE REPORTED IMMEDIATELY TO THE LANDSCAPE ARCHITECT
- BASE DRAWINGS PROVIDED BY DIAMOND SCHMITT ARCHITECTS
- VEGETATION INVENTORY BY GSP GROUP INC.
- LANDSCAPE DRAWINGS SHOW ENGINEERING INFORMATION FOR DESIGN PURPOSES ONLY. DO NOT CONSTRUCT ENGINEERING WORKS FROM THESE DRAWINGS.

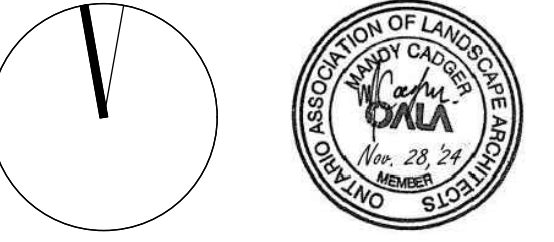
ISSUED

NO.	DATE	DESCRIPTION
1	2024-04-01	Issued for Schematic Design Coordination
2	2024-06-26	Issued for MCHN Draft Submission
3	2024-05-02	Issued for Stage 2.1 Block Schematics
4	2024-07-12	Issued for Construction
5	2024-07-31	Issued for 50% ITO
6	2024-09-19	Issued for Site Plan Approval
7	2024-11-28	Issued for Site Plan Approval



ROOF TERRACE PLAN

NOT FOR CONSTRUCTION



CONTRACTOR MUST CHECK & VERIFY ALL DIMENSIONS ON THE JOB. DO NOT SCALE DRAWINGS.

ALL DRAWINGS, SPECIFICATIONS AND RELATED DOCUMENTS ARE THE COPYRIGHT PROPERTY OF THE ARCHITECT. ANY REPRODUCTION OR TRANSMISSION OF THESE DRAWINGS, SPECIFICATIONS AND RELATED DOCUMENTS IN ANY FORM OR BY ANY MEANS, WITHOUT THE WRITTEN PERMISSION OF THE ARCHITECT, IS STRICTLY PROHIBITED.



Uxbridge Hospital
PROJECT NO. 23175

Landscape Courtyard and Roof Terrace - Planting Plan

KINESIK
ENGINEERED PRODUCTS
www.kinesik.ca

ACCESS TILE ACC-6-2424
KINESIK ENGINEERED PRODUCTS
ACCESS TILE ACC-6-2424 AND THE TREAD AND TRAILING OF THE ACCESS TILE, DOWN AND FASTER TO THE TREAD AND TRAILING AND INTERNATIONALLY DISTRIBUTED UNDER LICENSE BY KINESIK ENGINEERED PRODUCTS

ACCESS TILE ACC-6-2424
TRUNCATED DOME, TACTILE WALKING SURFACE INDICATOR 610 x 610 SURFACE APPLIED
INLINE DOME TILE DRAWING

ITEM DESCRIPTION PART NO. QTY
1 ACCESS TILE ACC-6-2424 1
2 1/4" ANCHOR ACC-FR21 8
3 TACTILE DOME TILE ACC-6-2424 1 ea

NOTE: ANCHORS ARE INCLUDED AND ASSEMBLED ON-TILE

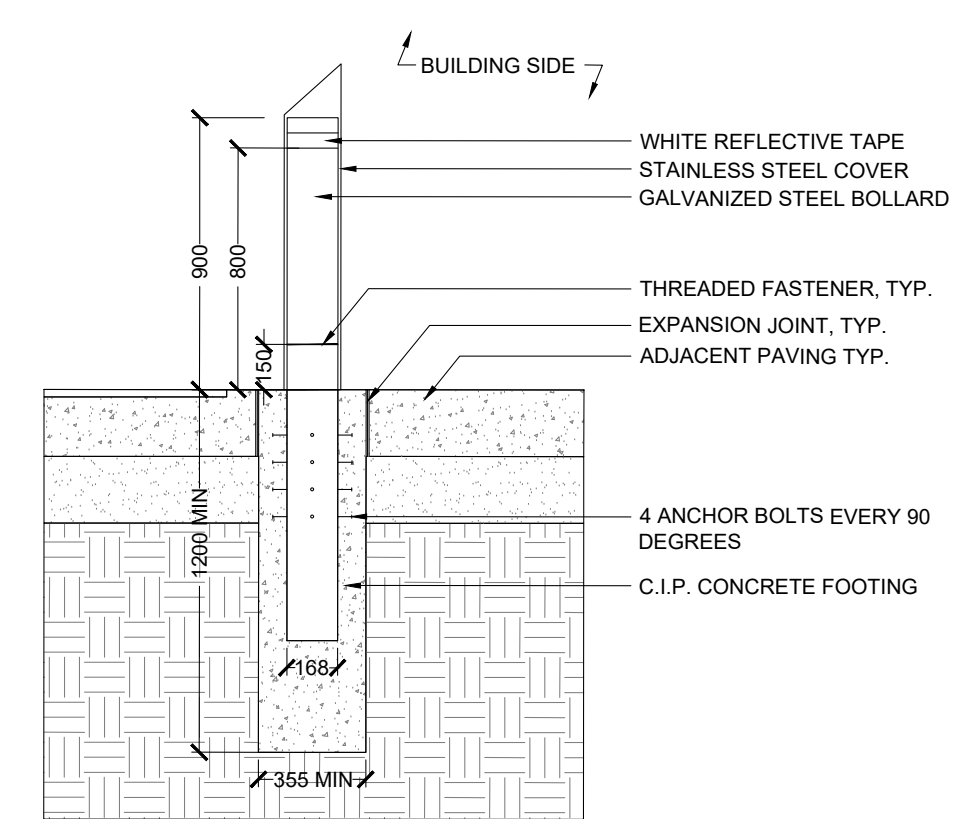
REFERENCE DRAWINGS
DWG. NO. DESCRIPTION

DATE: 04/11/2024
DRAWN BY: K. HAYES
CHECKED BY: K. HAYES
DATE: 04/11/2024
SCALE: 1:1
PROJECT: 2024-07-31
TAX: 2024-07-31
MATERIAL: POLYMER COMPOSITE

Access Tile ACC-6-2424

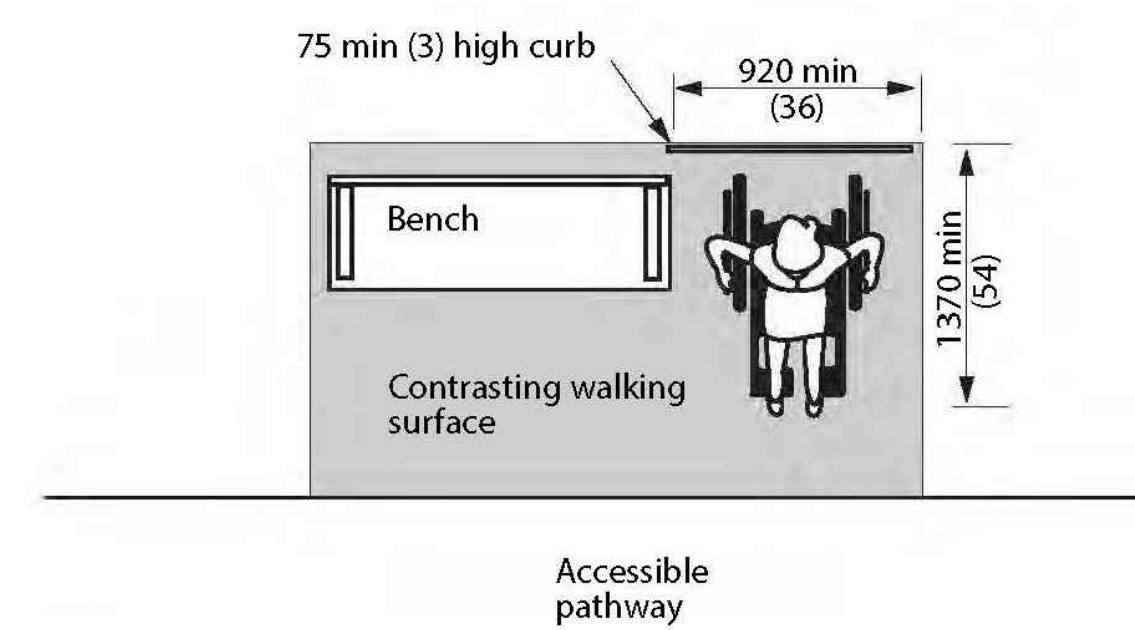
1 TACTILE PLATE
N.T.S

NOTES:
1. ALL FASTENERS TO BE CORROSION RESISTANT WITH APPROPRIATE SPACERS BETWEEN DISSIMILAR METALS.
2. PRODUCT AVAILABLE FROM ONTARIO BOLLARDS.



2 STEEL ENTRY BOLLARDS BY ONTARIO BOLLARD
N.T.S

MBE-0970-00024
Legacy # MLB970-W-C



MATERIALS: Bench ends are made from solid cast aluminum and the seat employs 1" (pe wood).

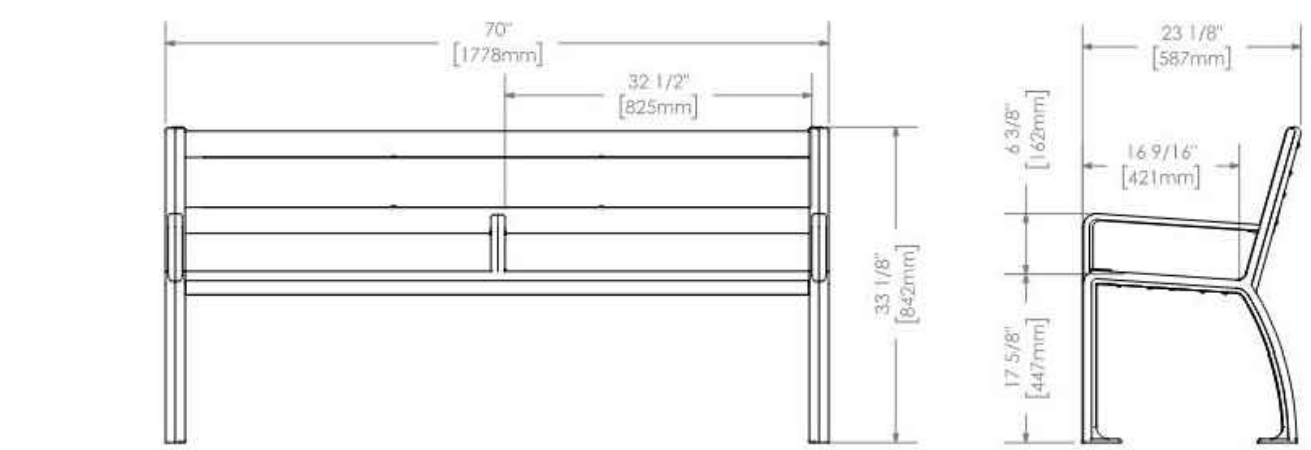
FINISH: All steel components are protected with E-Coat rust proofing. The Maglin Powdercoat System provides a durable finish on all metal surfaces.

INSTALLATION: The bench is delivered pre-assembled. The legs have 9/16" holes for anchoring.

TO SPECIFY: Select MBE-0970-00024

Choose: Powdercoat Color

HEIGHT: 33 1/8" (84.2cm) LENGTH: 70" (177.8cm) DEPTH: 23 1/8" (58.7cm) WEIGHT: 114.75lbs (52.08kg)



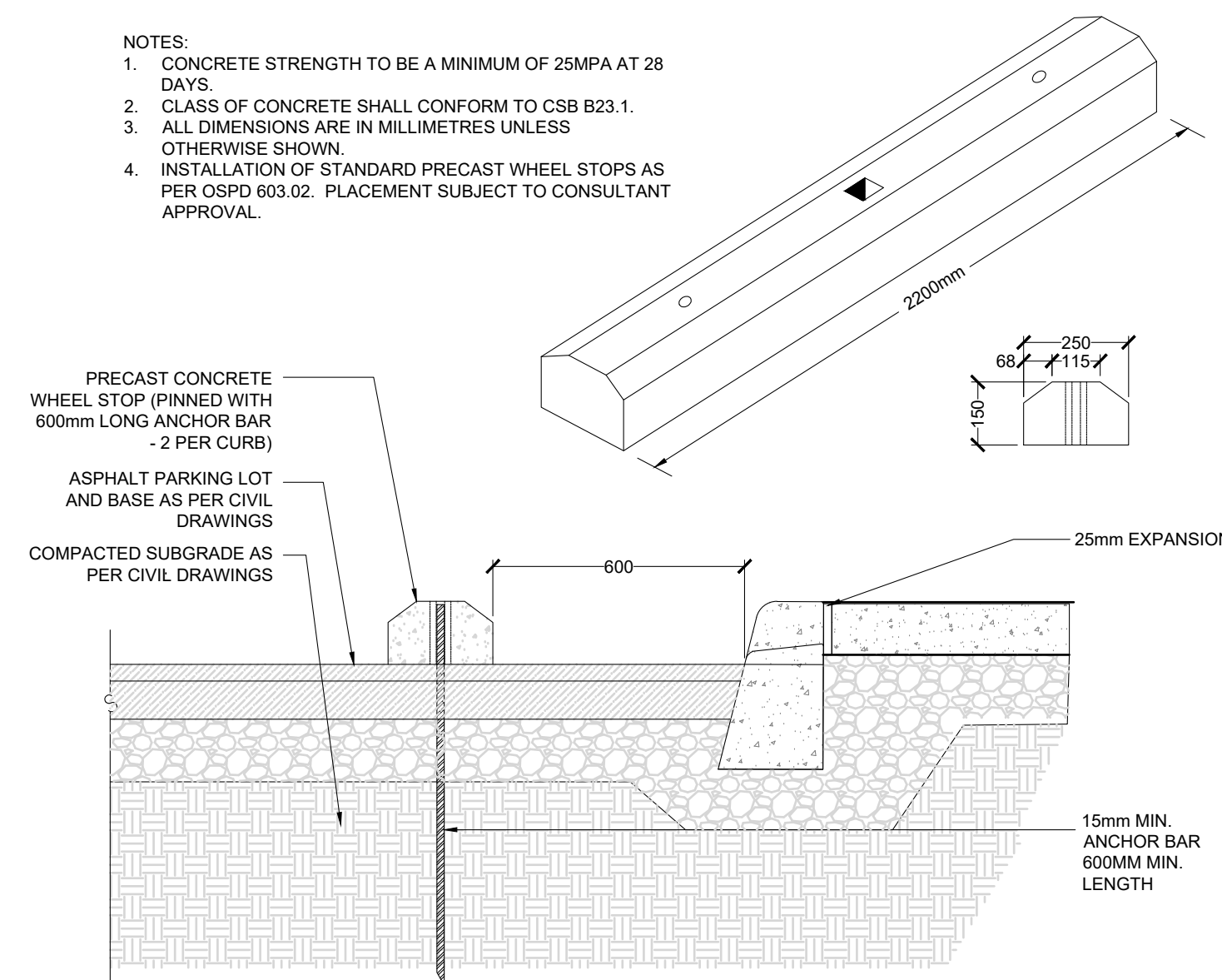
MAGLIN

1-800-766-6666
1-977-226-6666
www.maglin.com
info@maglin.com

All drawings, specifications, design and details are the property of Maglin Inc. and may not be used without Maglin's authorization. Details and specifications may vary due to manufacturing requirements of our products.

3 SURFACE MOUNT BENCH
N.T.S

NOTES:
1. CONCRETE STRENGTH TO BE A MINIMUM OF 25MPA AT 28 DAYS
2. CLASS OF CONCRETE SHALL CONFORM TO CSB B23.1
3. ALL DIMENSIONS ARE IN MILLIMETERS UNLESS OTHERWISE SHOWN
4. INSTALLATION OF STANDARD PRECAST WHEEL STOPS AS PER OSPO 603.02. PLACEMENT SUBJECT TO CONSULTANT APPROVAL



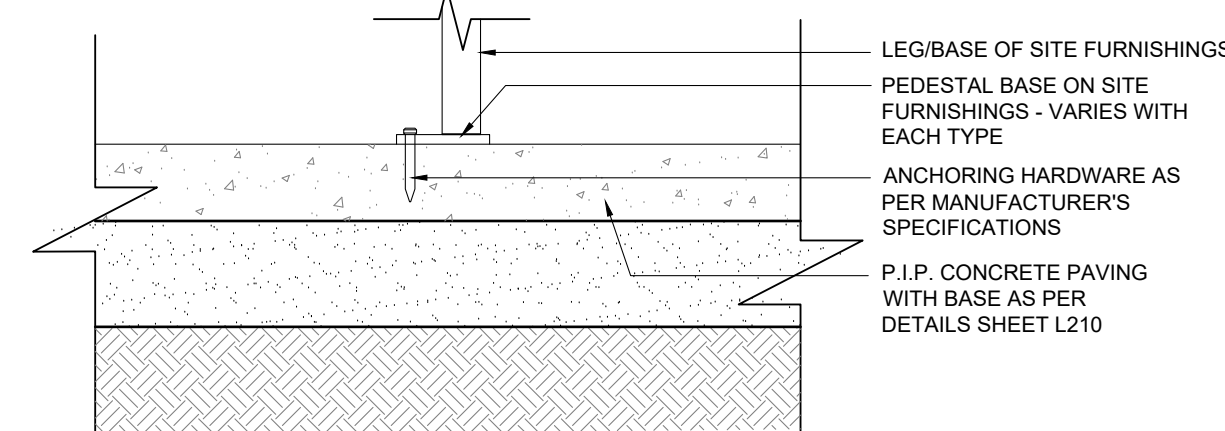
6 PRE-CAST BUMPER CURB
1:10



NOTES:

1. ALL DIMENSIONS ARE IN MILLIMETERS UNLESS OTHERWISE NOTED.
2. ALL FURNITURE LOCATIONS TO BE STAKED OUT AND/OR APPROVED BY THE LANDSCAPE ARCHITECT PRIOR TO INSTALLATION.
3. BIKE RACK TO BE BLACK POWDER COATED FINISH SURFACE MOUNTED AS PER MANUFACTURER'S SPECIFICATIONS.

SEE INSTALLATION GUIDE FOR SURFACE MOUNTING INFORMATION



5 SURFACE MOUNT
N.T.S

4 BIKE RACKS BY HAUSER
N.T.S

GENERAL NOTES:
1. DRAWINGS NOT TO BE USED FOR CONSTRUCTION UNLESS AUTHORIZED BY THE LANDSCAPE ARCHITECT
2. CONTRACTOR SHALL REPORT ANY DISCREPANCIES BETWEEN THE DRAWINGS AND SITE CONDITIONS PRIOR TO COMMENCEMENT OF THE WORK
3. ALL UTILITY LOCATES ARE THE RESPONSIBILITY OF THE CONTRACTOR. HANDS OFF WITHIN THE LIMITS RECOMMENDED BY THE SERVICE UTILITY. UTILITY CONFLICTS WITH PROPOSED TREE LOCATIONS MUST BE REPORTED IMMEDIATELY TO THE LANDSCAPE ARCHITECT
4. BASE DRAWINGS PROVIDED BY DIAMOND SCHMITT ARCHITECTS
5. VEGETATION INVENTORY BY GSP GROUP INC.
6. LANDSCAPE DRAWINGS SHOW ENGINEERING INFORMATION FOR DESIGN PURPOSES ONLY. DO NOT CONSTRUCT ENGINEERING WORKS FROM THESE DRAWINGS.

ISSUED

NO.	DATE	DESCRIPTION
1	2024-07-26	Issued for Coordination
2	2024-07-31	Issued for 50% DD
3	2024-09-19	Issued for SPA
4	2024-11-28	Issued for Site Plan Approval

NOT FOR CONSTRUCTION



CONTRACTOR MUST CHECK & VERIFY ALL DIMENSIONS ON THE JOB
DO NOT SCALE DRAWINGS
ALL DRAWINGS, SPECIFICATIONS AND RELATED DOCUMENTS ARE THE PROPERTY OF THE ARCHITECT AND MUST BE RETURNED UPON REQUEST. REPRODUCTION OF DRAWINGS, SPECIFICATIONS AND RELATED DOCUMENTS IN PART OR IN WHOLE IS FORBIDDEN WITHOUT THE WRITTEN PERMISSION OF THE ARCHITECT.
THIS DRAWING IS NOT TO BE USED FOR CONSTRUCTION UNTIL SIGNED BY THE ARCHITECT.



Uxbridge Hospital
PROJECT NO.: 23175

Landscape Details

L320