

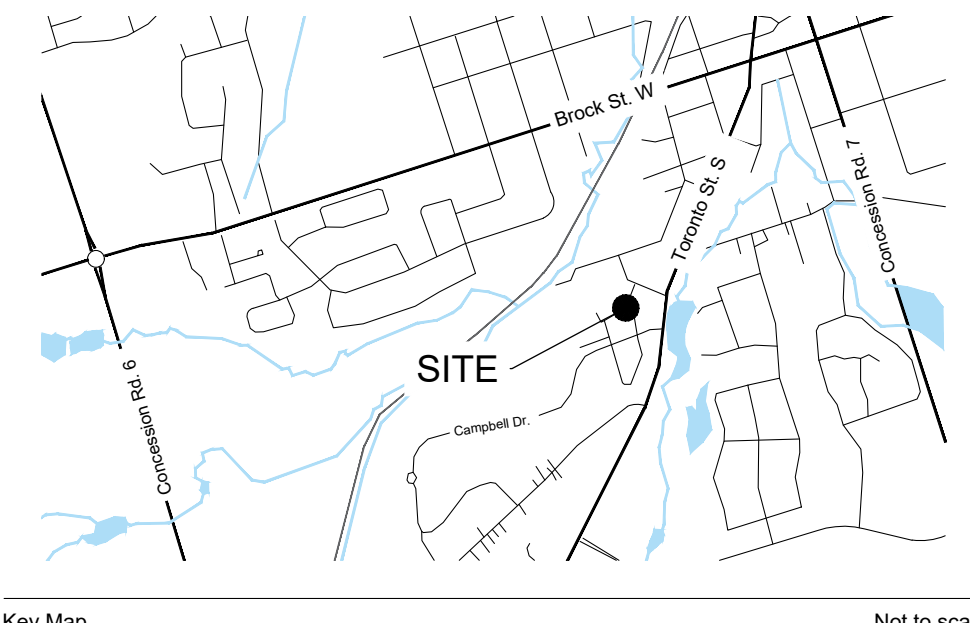
All Drawings, Specifications and Related Documents are the Copyright Property of the Landscape Architect and must be returned upon request.  
 Drawings shall not to be used for construction unless authorized by the Landscape Architect.

**UniversalCare Canada Inc.**  
 467 Edgeley Blvd. Unit 3, Vaughan, Ontario, L4K 4E9

Client

Issued

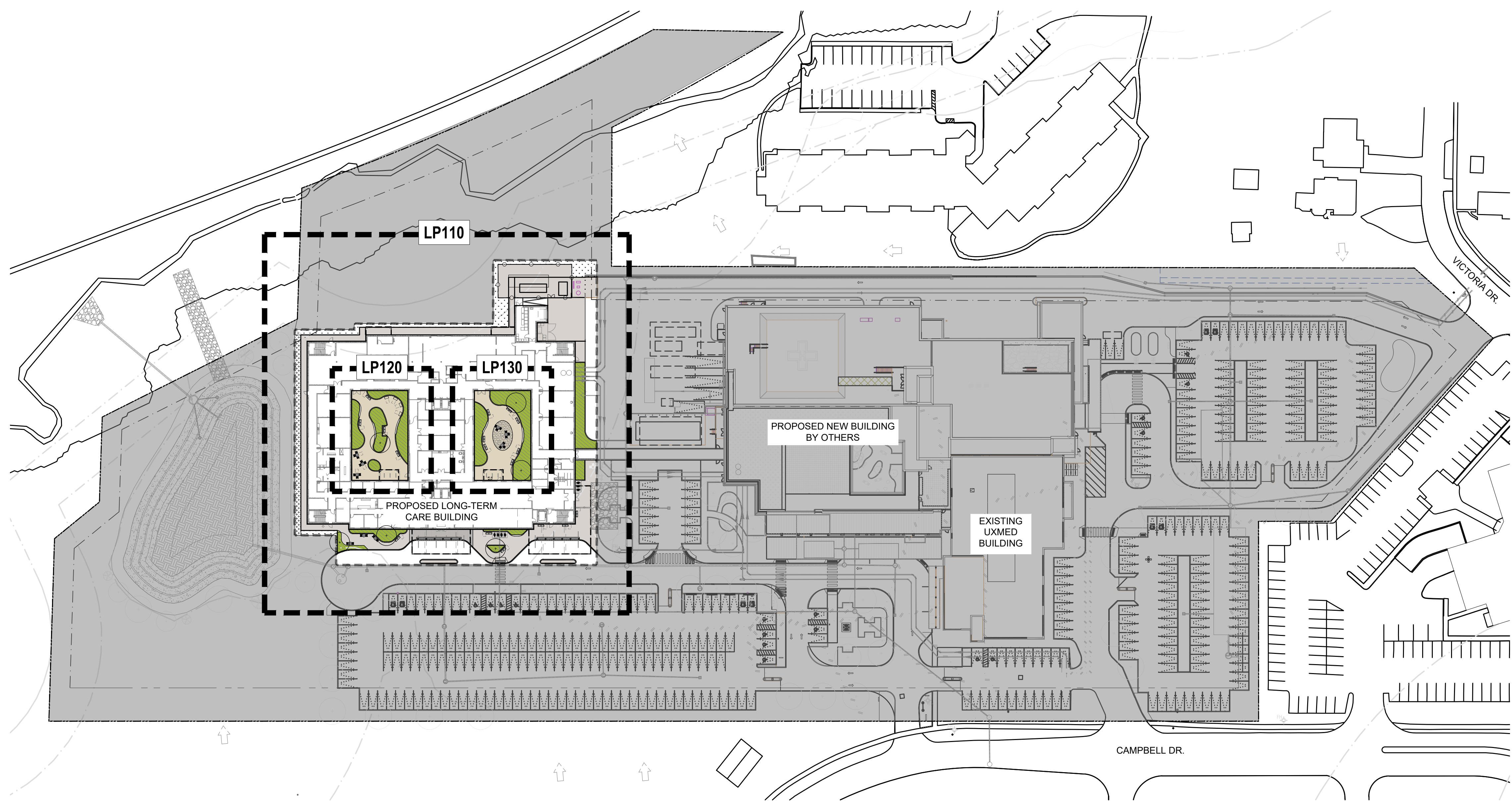
Date	Description	By
2025.02.06	Issued for Site Plan Approval	MC



Key Map Not to scale

- Reference Notes**
1. Based drawings provided by Esposto Architects Inc..
  2. Refer to Civil drawings prepared by LEA Consulting Ltd. for grading and servicing information.

- Legend**
- EXISTING TREES
  - PROPOSED DECIDUOUS TREES
  - PROPOSED CONIFEROUS TREES
  - PLANTING BED
  - SEED MIX 'A'
  - SEED MIX 'B'
  - CONCRETE PAVING
  - DECORATIVE CONCRETE PAVING
  - BENCH
  - BIKE RACK
  - BOLLARD
  - PROPERTY BOUNDARY
  - CHAIN LINK FENCE



**NOT FOR CONSTRUCTION**

- General Notes**
1. Contractor shall report any discrepancies between the drawings and site conditions prior to commencement of the work.
  2. All utility locates are the responsibility of the Contractor. Hand dig within the limits recommended by the Service Utility Provider. Utility conflicts with proposed tree locations must be reported immediately to the Landscape Architect.
  3. Landscape drawings show engineering information for design purposes only. Do not construct engineering works from these drawings.

**Oak Valley Long Term Care**  
 4 Campbell Drive, Uxbridge, ON  
 File No.:

Project Information

North Seal

10 5 0 10 20 30 1:750m

Scale: As Shown Do not scale drawings

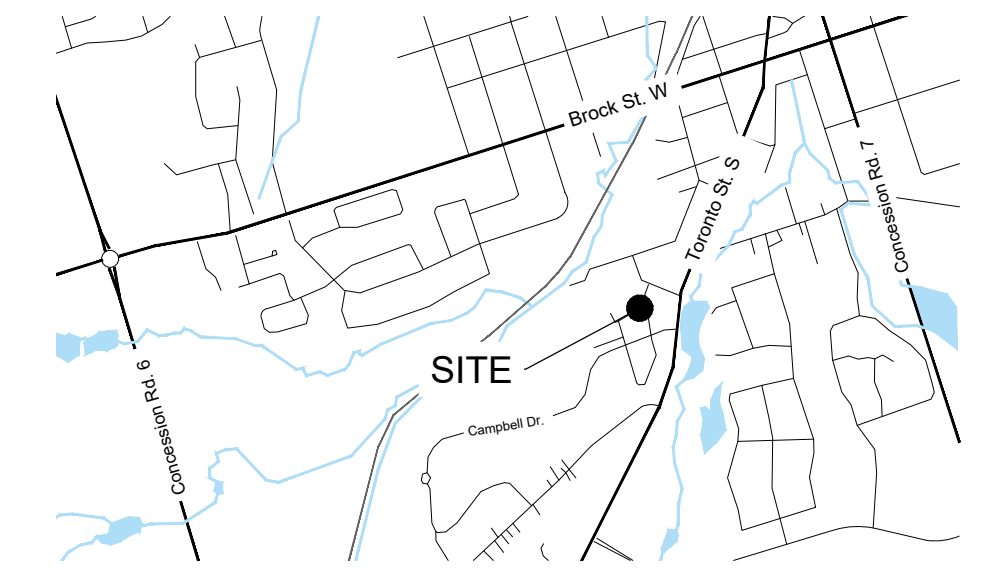
Project No. 25007 Checked By: MC  
 Date: 2025.02.05 Drawn By: RH

**Landscape Key Plan**  
 Drawing Name

**LP100**  
 Drawing No.

**PLANT SCHEDULE LANDSCAPE PLAN**

CODE	QTY	BOTANICAL NAME	COMMON NAME	SIZE	CONTAINER	REMARKS
<b>DECIDUOUS TREES</b>						
ALC	3	Amelanchier laevis 'Cumulus'	Cumulus Allegheny Serviceberry	50mm Cal.	W.B.	Tree Form
<b>BROADLEAF EVERGREENS</b>						
Ir	3	Ilex verticillata 'FarrowBPop'	Berry Poppins® Winterberry	60cm	3 gal.	2 m
<b>ORNAMENTAL GRASSES</b>						
cxp	40	Carex pensylvanica	Pennsylvania Sedge	---	1 gal.	0.6 m
scs	181	Schizachyrium scoparium	Little Bluestem	---	1 gal.	0.6 m
<b>PERENNIALS</b>						
Acf	33	Amsonia ciliata	Fringed Bluestar	---	1 gal.	600 mm
ast	25	Asclepias tuberosa	Butterfly Milkweed	---	1 gal.	500 mm
ecl	20	Echinacea pallida	Pale Purple Coneflower	---	1 gal.	800 mm
hou	4	Hosta x 'Blue Umbrellas'	Blue Umbrellas Hosta	---	1 gal.	1,250 mm



Key Map Not to scale

- Reference Notes**
- Based drawings provided by Esposto Architects Inc.
  - Refer to Civil drawings prepared by LEA Consulting Ltd. for grading and servicing information.

- Legend**
- EXISTING TREES
  - PROPOSED DECIDUOUS TREES
  - PROPOSED CONIFEROUS TREES
  - PLANTING BED
  - SEED MIX 'A'
  - SEED MIX 'B'
  - CONCRETE PAVING
  - DECORATIVE CONCRETE PAVING
  - BENCH
  - BIKE RACK
  - BOLLARD
  - PROPERTY BOUNDARY
  - CHAIN LINK FENCE
  - SNOW MELT SYSTEM BY OTHERS

**NOTE:**

- FOR THE LANDSCAPE DESIGN WITHIN THE HOSPITAL SITE WORK, REFER TO OAK VALLEY HOSPITAL LANDSCAPE DRAWINGS L000 - L320.

All Drawings, Specifications and Related Documents are the Copyright Property of the Landscape Architect and must be returned upon request.  
 Drawings shall not be used for construction unless authorized by the Landscape Architect.

**UniversalCare Canada Inc.**  
 467 Edgeley Blvd. Unit 3, Vaughan, Ontario, L4K 4E9

Client

Issued	Date	Description	By
	2025.02.06	Issued for Site Plan Approval	MC

**NOT FOR CONSTRUCTION**

- General Notes**
- Contractor shall report any discrepancies between the drawings and site conditions prior to commencement of the work.
  - All utility locates are the responsibility of the Contractor. Hand dig within the limits recommended by the Service Utility Provider. Utility conflicts with proposed tree locations must be reported immediately to the Landscape Architect.
  - Landscape drawings show engineering information for design purposes only. Do not construct engineering works from these drawings.

**Oak Valley Long Term Care**  
 4 Campbell Drive, Uxbridge, ON  
 File No.:

Project Information

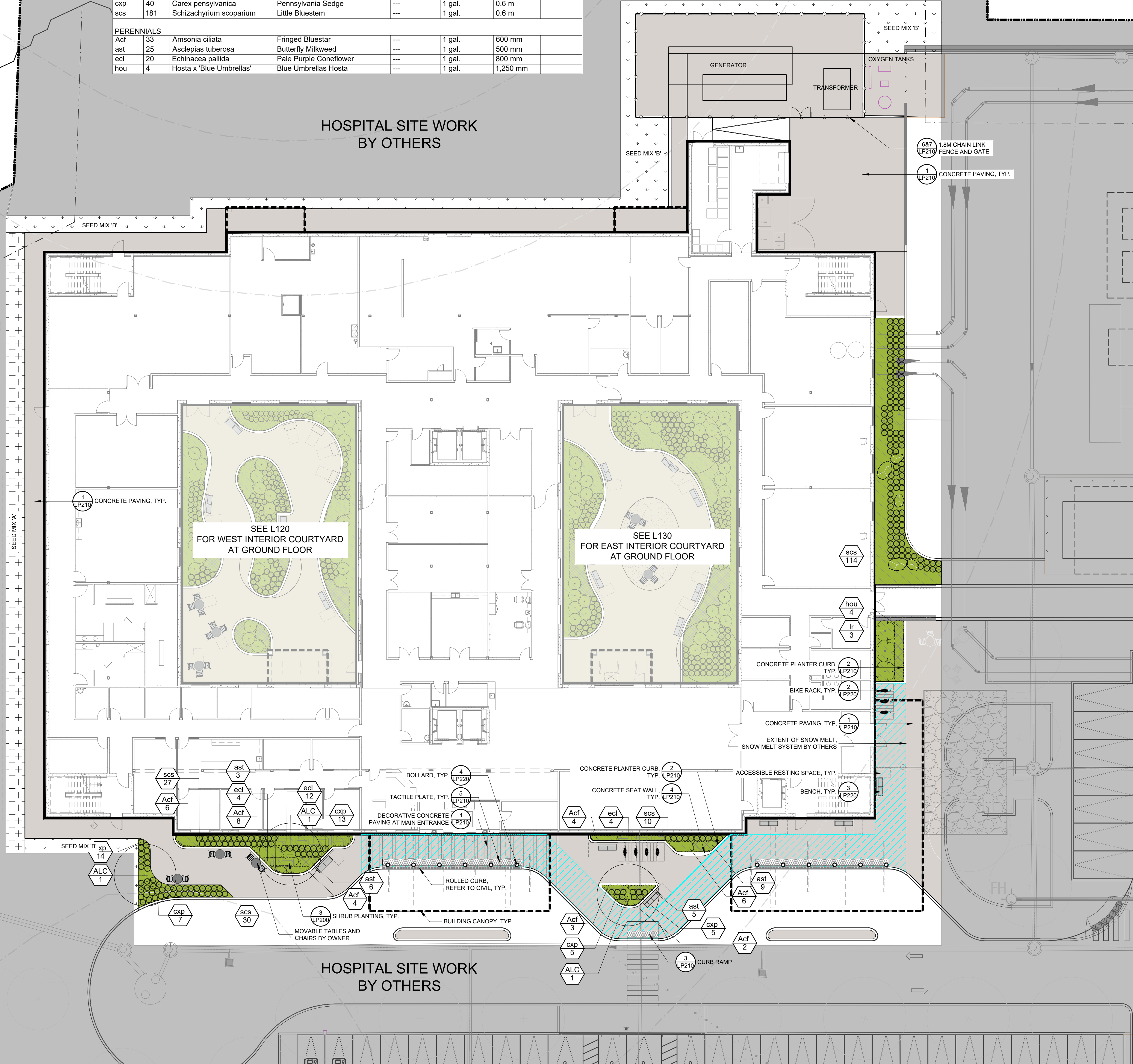
North Seal

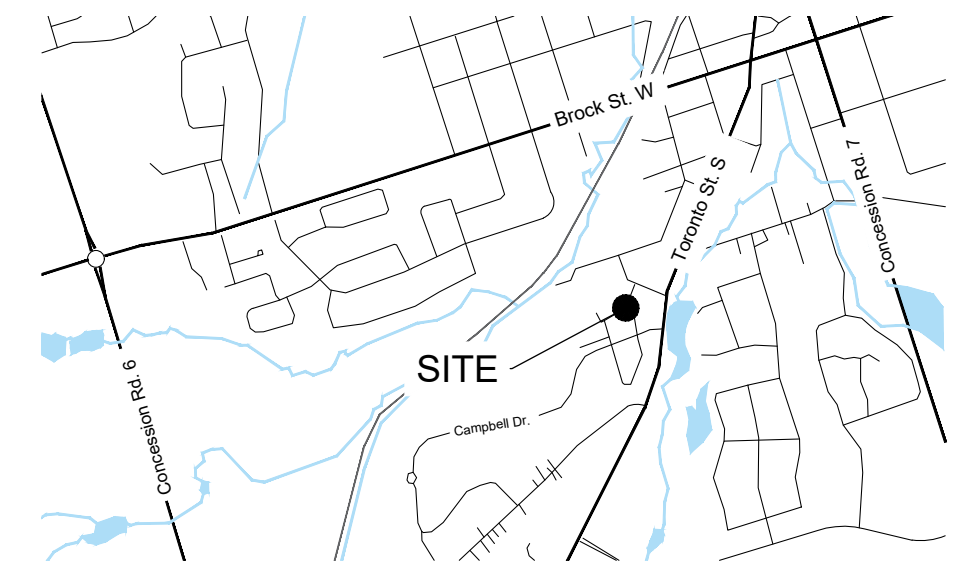
Scale: As Shown Do not scale drawings

Project No. 25007 Checked By: MC  
 Date: 2025.02.05 Drawn By: RH

**Landscape Plan**  
 Drawing Name

**LP110**  
 Drawing No.





Key Map

Not to scale

**Reference Notes**

1. Based drawings provided by Esposto Architects Inc..
2. Refer to Civil drawings prepared by LEA Consulting Ltd. for grading and servicing information.

**Legend**

- EXISTING TREES
- PROPOSED DECIDUOUS TREES
- PROPOSED CONIFEROUS TREES
- PLANTING BED
- COLOURED CONCRETE PAVING
- DECORATIVE COLOURED CONCRETE PAVING
- BENCH



CODE	QTY	BOTANICAL NAME	COMMON NAME	SIZE	CONTAINER	REMARKS	
<b>DECIDUOUS TREES</b>							
CK	1	Cladrastis kentukea	American Yellowwood	60mm Cal.	W.B.		
CODE	QTY	BOTANICAL NAME	COMMON NAME	SIZE	CONTAINER	SPACING	REMARKS
<b>DECIDUOUS SHRUBS</b>							
HqS	30	Hydrangea quercifolia 'Sike's Dwarf'	Sike's Dwarf Oakleaf Hydrangea	60cm	3 gal.	1.2 m	
<b>ORNAMENTAL GRASSES</b>							
cxp	60	Carex pensylvanica	Pennsylvania Sedge	---	1 gal.	0.6 m	
Ehp	115	Hystrix patula	Bottlebrush Grass	60cm		0.5 m	
<b>PERENNIALS</b>							
gem	53	Geranium maculatum	Wild Geranium	---	1 gal.	600 mm	
get	184	Geum triflorum	Prairie Smoke	---	1 gal.	300 mm	

**NOT FOR CONSTRUCTION**

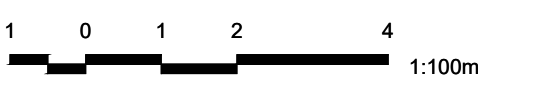
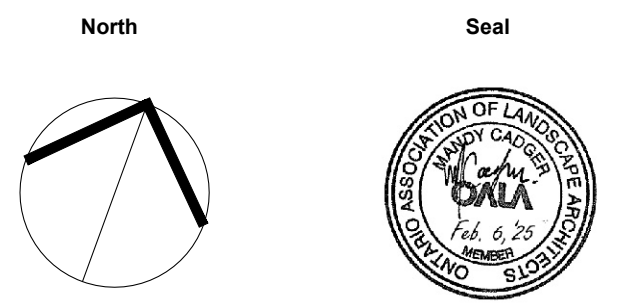
**General Notes**

1. Contractor shall report any discrepancies between the drawings and site conditions prior to commencement of the work.
2. All utility locates are the responsibility of the Contractor. Hand dig within the limits recommended by the Service Utility Provider. Utility conflicts with proposed tree locations must be reported immediately to the Landscape Architect.
3. Landscape drawings show engineering information for design purposes only. Do not construct engineering works from these drawings.

**Oak Valley Long Term Care**

4 Campbell Drive, Uxbridge, ON  
File No.:

Project Information



Scale: As Shown Do not scale drawings

Project No. 25007 Checked By: MC  
Date: 2025.02.05 Drawn By: RH

**Landscape Plan - West Courtyard**

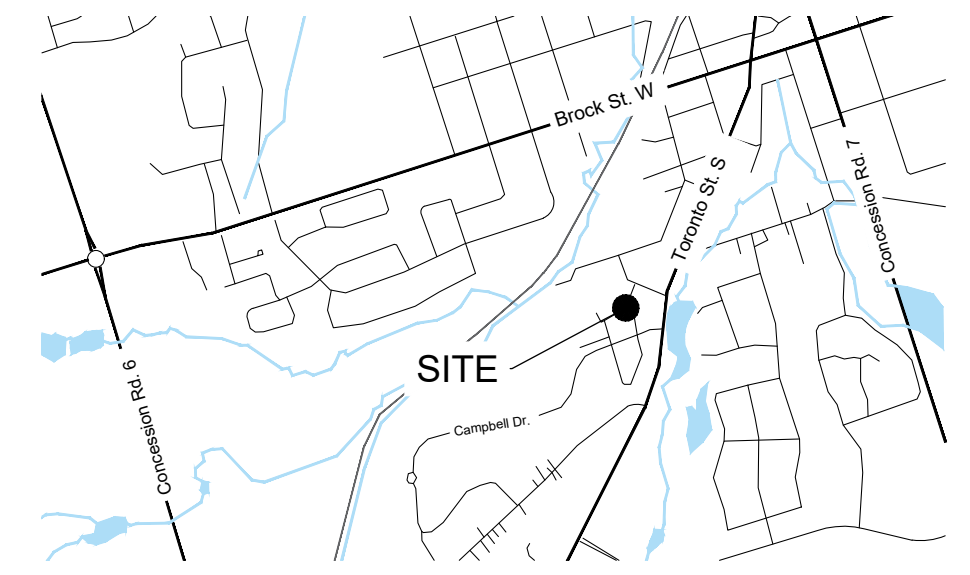
Drawing Name

**LP120**

Drawing No.

Client

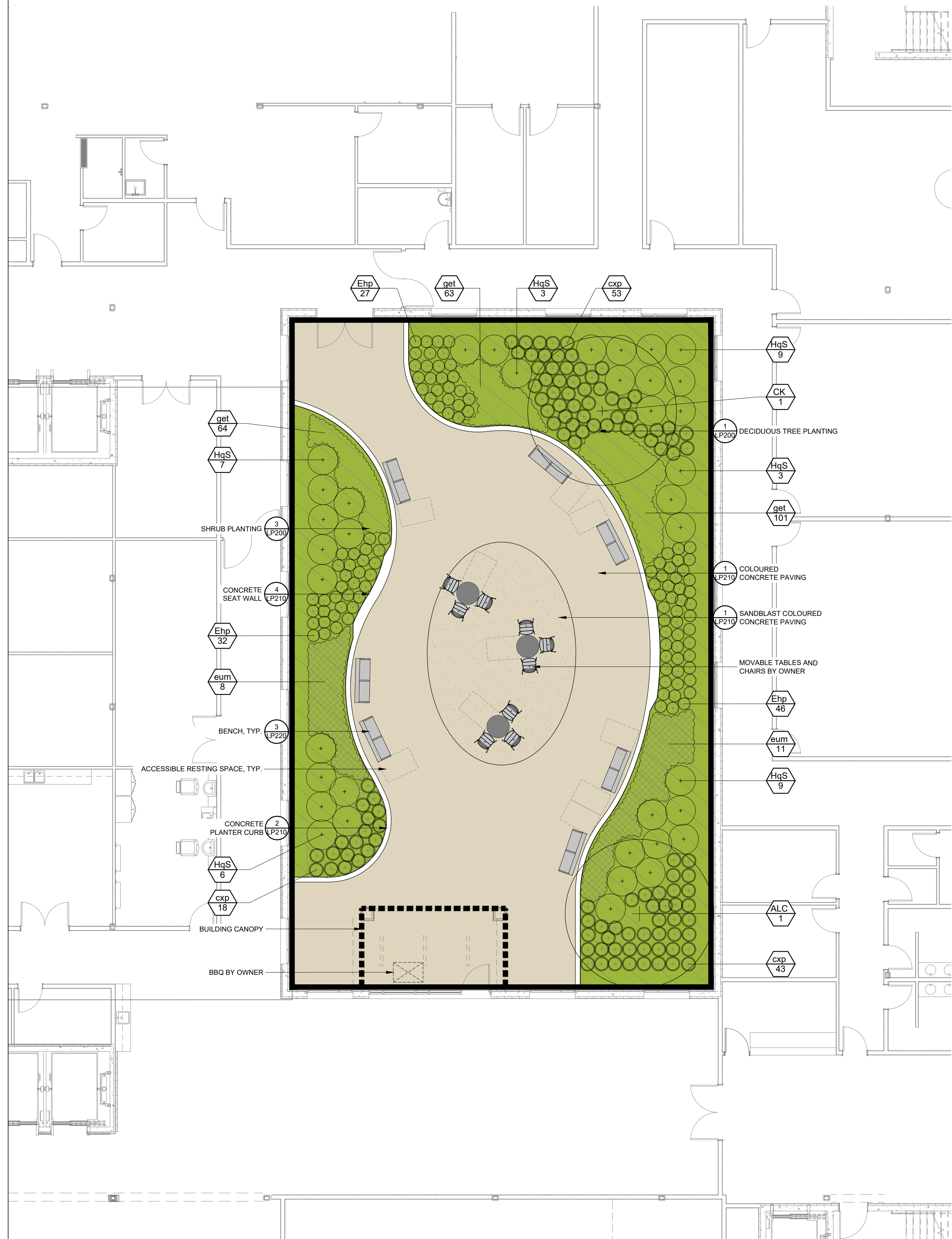
Issued	Date	Description	By
	2025.02.06	Issued for Site Plan Approval	MC



Key Map Not to scale

- Reference Notes**
- Based drawings provided by Esposto Architects Inc.
  - Refer to Civil drawings prepared by LEA Consulting Ltd. for grading and servicing information.

- Legend**
- EXISTING TREES
  - PROPOSED DECIDUOUS TREES
  - PROPOSED CONIFEROUS TREES
  - PLANTING BED
  - COLOURED CONCRETE PAVING
  - DECORATIVE COLOURED CONCRETE PAVING
  - BENCH



**PLANT SCHEDULE EAST COURTYARD**

CODE	QTY	BOTANICAL NAME	COMMON NAME	SIZE	CONTAINER	REMARKS
<b>DECIDUOUS TREES</b>						
ALC	1	Amelanchier laevis 'Cumulus'	Cumulus Allegheny Serviceberry	50mm Cal.	W.B.	Tree Form
CK	1	Cladrastis kentukea	American Yellowwood	60mm Cal.	W.B.	
<b>DECIDUOUS SHRUBS</b>						
HqS	37	Hydrangea quercifolia 'Sike's Dwarf'	Sike's Dwarf Oakleaf Hydrangea	60cm	3 gal.	1.2 m
<b>ORNAMENTAL GRASSES</b>						
cxp	114	Carex pensylvanica	Pennsylvania Sedge	---	1 gal.	0.6 m
Ehp	105	Hystrix patula	Bottlebrush Grass	60cm		0.5 m
<b>PERENNIALS</b>						
eum	19	Eupatorium maculatum	Joe Pye Weed	---	1 gal.	1,000 mm
get	228	Geum triflorum	Prairie Smoke	---	1 gal.	300 mm

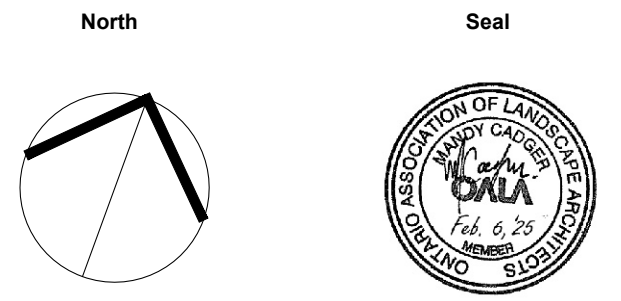
**NOT FOR CONSTRUCTION**

- General Notes**
- Contractor shall report any discrepancies between the drawings and site conditions prior to commencement of the work.
  - All utility locates are the responsibility of the Contractor. Hand dig within the limits recommended by the Service Utility Provider. Utility conflicts with proposed tree locations must be reported immediately to the Landscape Architect.
  - Landscape drawings show engineering information for design purposes only. Do not construct engineering works from these drawings.

**Oak Valley Long Term Care**

4 Campbell Drive, Uxbridge, ON  
File No.:

Project Information



Scale: As Shown Do not scale drawings

Project No. 25007 Checked By: MC  
Date: 2025.02.05 Drawn By: RH

**Landscape Plan - East Courtyard**

Drawing Name

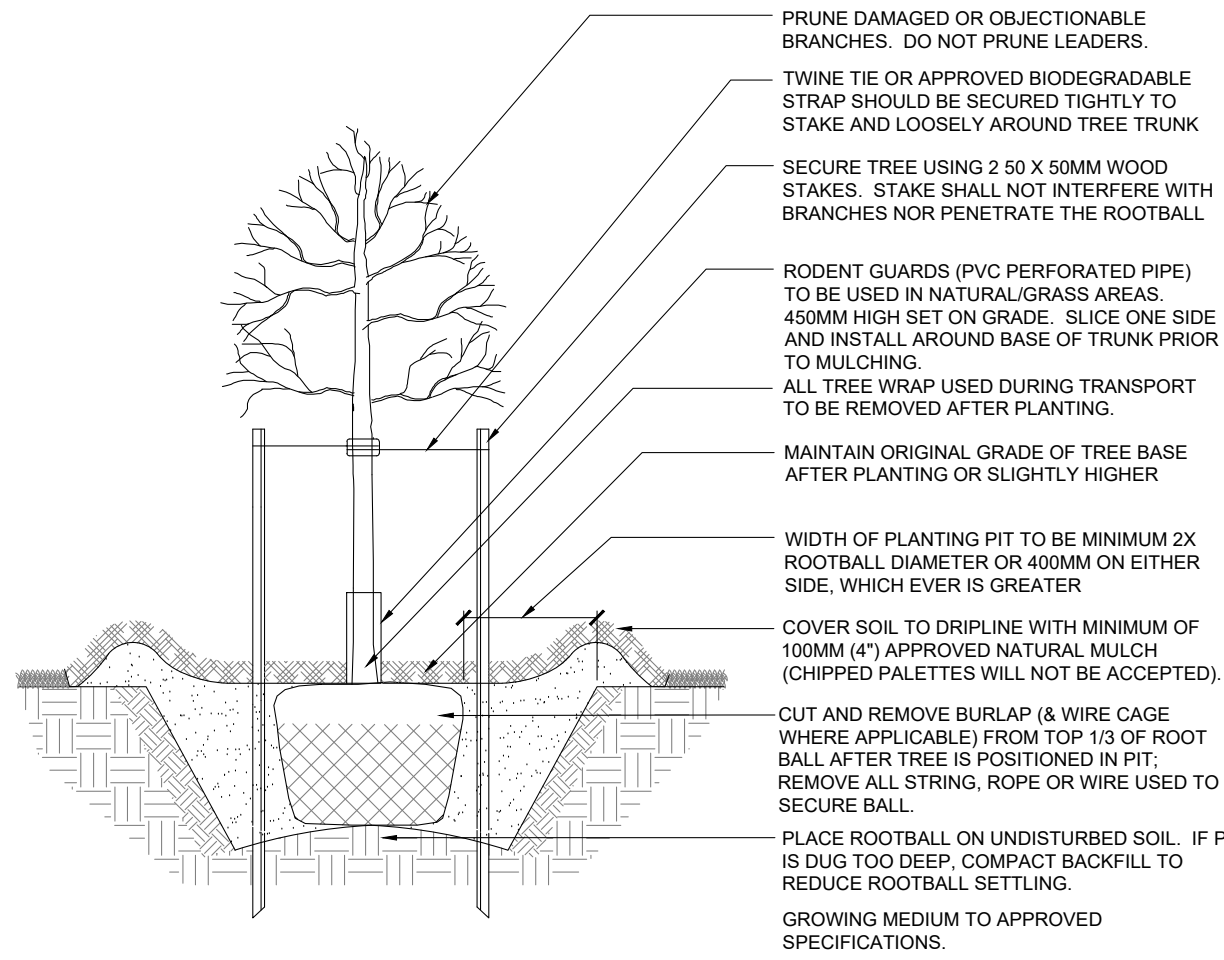
**LP130**

Drawing No.

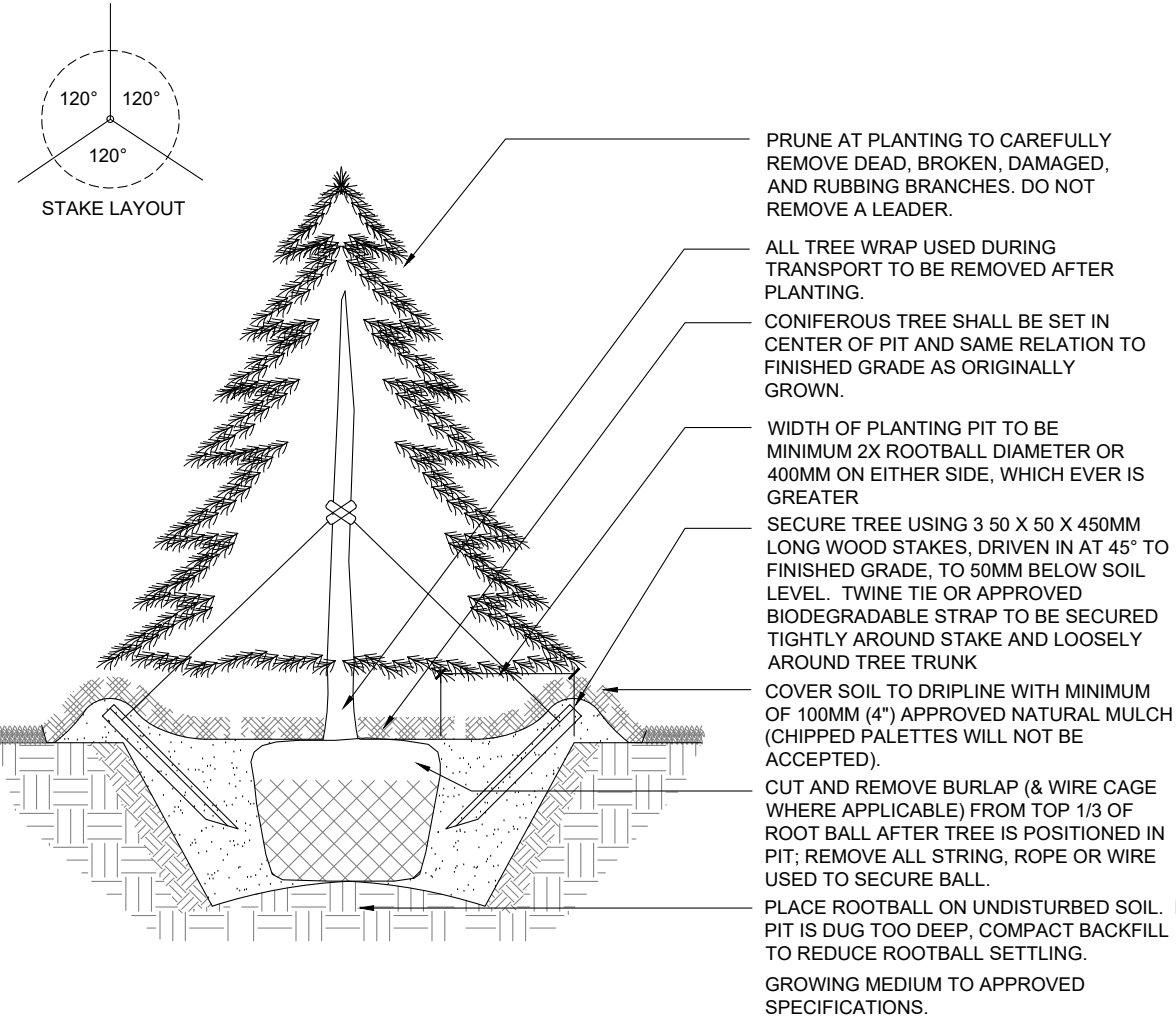
**UniversalCare Canada Inc.**  
467 Edgeley Blvd. Unit 3, Vaughan, Ontario, L4K 4E9

Client

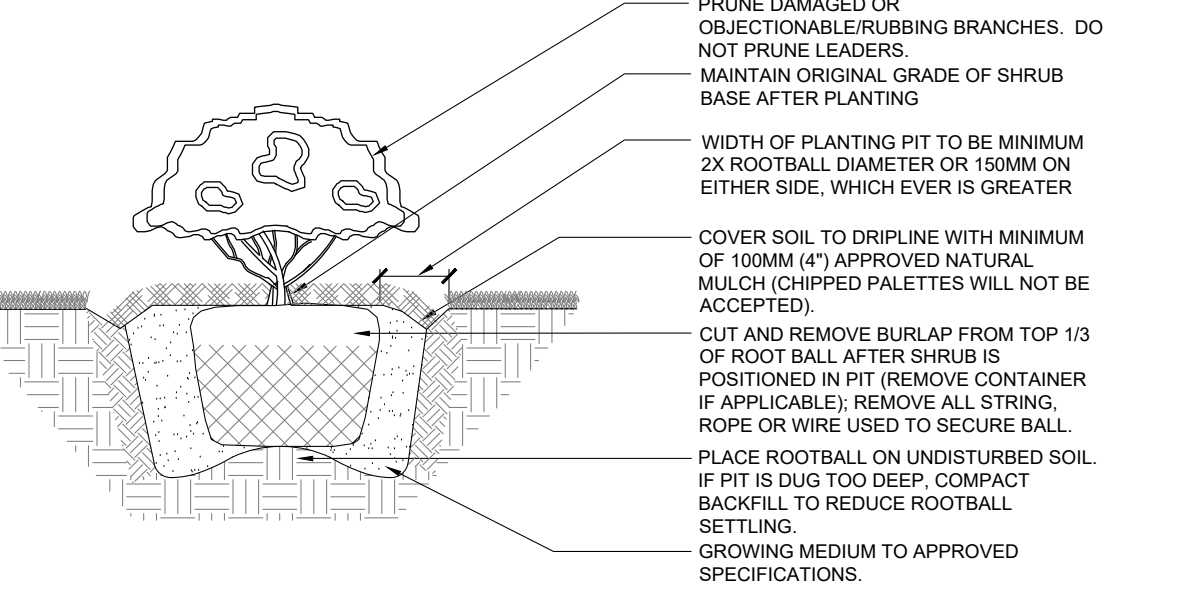
Issued	Date	Description	By
2025.02.06	2025.02.06	Issued for Site Plan Approval	MC



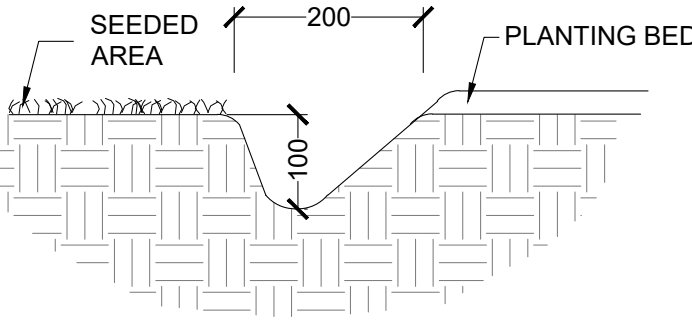
**1** DECIDUOUS TREE PLANTING  
N.T.S.



**2** CONIFEROUS TREE PLANTING  
N.T.S.



**3** SHRUB PLANTING  
N.T.S.



**4** TYPICAL PLANTING BED EDGE AT SEEDED AREA  
N.T.S.

- NOTES:**
- NO-MOW MEADOW 'A' SEED MIXTURE IS 'CVC 1 - UPLAND MIX' PER CREDIT VALLEY CONSERVATION PLANT SELECTION GUIDELINE, APRIL 2018.
  - SEED MIXTURE AVAILABLE FROM OSC SEED OR APPROVED ALTERNATE.
  - NURSE CROP TO BE APPLIED AT 15KG/HA. SPRING-SUMMER PLANTING TO BE SOWN WITH 40% OATS, 45% BARLEY & 15% CANADA WILD RYE. FALL PLANTING TO BE SOWN WITH 100% WINTER WHEAT.

**NO-MOW MEADOW 'A' SEED MIXTURE**  
SOW AT 25KG/ HA + NURSE CROP

1%	Anemone canadensis	Canada Anemone
2%	Asclepias syriaca	Common Milkweed
15%	Carex granularis	Limestone Meadow Sedge
40%	Elymus virginicus	Virginia Wildrye
1%	Euthamia graminifolia	Grass-leaved Goldenrod
1%	Monarda fistulosa	Wild Bergamot
25%	Oenothera biennis	Common Evening Primrose
10%	Rudbeckia hirta	Black Eyed Susan
1%	Solidago canadensis	Canada Goldenrod
1%	Solidago juncea	Early Goldenrod
1%	Solidago nemoralis	Gray-stemmed Goldenrod
1%	Symphoricarum novae-angliae	New England Aster
1%	Verbena urticifolia	White Vervain

**5** MEADOW SEED MIXES  
N.T.S.

- NOTES:**
- SEED MIXTURE BASED ON '8340 - LOW MAINTENANCE ECO LAWN' AVAILABLE FROM OSC SEED OR APPROVED ALTERNATE.
  - NURSE CROP TO BE APPLIED AT 15KG/HA. SPRING-SUMMER PLANTING TO BE SOWN WITH 40% OATS, 45% BARLEY & 15% CANADA WILD RYE. FALL PLANTING TO BE SOWN WITH 100% WINTER WHEAT.

**NO-MOW MEADOW 'B' SEED MIXTURE**  
SOW AT 180KG/ HA + NURSE CROP

30%	Festuca ovina	Hard Fescue
20%	Festuca rubra	Creeping Red Fescue
30%	Festuca rubra commutata	Chewing Fescue
10%	Festuca subverticillata	Nodding Fescue
10%	Lolium perenne	Perennial Ryegrass

- SEEDING NOTES**
- SEEDING SHALL BE PERFORMED BETWEEN MID-MAY AND MID-SEPTEMBER. OBTAIN CONSULTANT'S APPROVAL FOR ANY SEEDING OUTSIDE OF THE ABOVE PREFERRED WINDOW.
  - APPLY HYDRAULIC MIXTURE EVENLY AND UNIFORMLY AND AT SUCH A RATE TO MEET THE COVERAGE SPECIFIED IN OPSS 572.
  - STRAW SHOULD JUST COVER THE SOIL SURFACE, BUT NOT BURY IT. SOME SOIL SHOULD BE VISIBLE THROUGH THE STRAW - TO A MAXIMUM OF 10%.
  - ALL SEEDING TO BE APPLIED THROUGH HYDRAULIC METHOD EXCEPT AREAS WHERE CONDITIONS WILL ONLY PERMIT MECHANICAL SEEDING. CONTRACTOR TO OBTAIN CONSULTANT'S APPROVAL FOR ALL ALTERNATE SEEDING METHODS.
  - FOR AREAS WHERE SEED IS APPLIED TO STEEP SLOPES (3:1 AND ABOVE) AN EROSION CONTROL BLANKET SHALL BE APPLIED AND STAKED APPROPRIATELY.
- SOIL NOTES**
- ALL SEEDED AREAS SHALL HAVE MINIMUM TOPSOIL DEPTH OF 150mm.

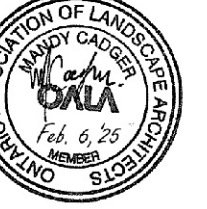
NOT FOR CONSTRUCTION

- General Notes**
- Contractor shall report any discrepancies between the drawings and site conditions prior to commencement of the work.
  - All utility locates are the responsibility of the Contractor. Hand dig within the limits recommended by the Service Utility Provider. Utility conflicts with proposed tree locations must be reported immediately to the Landscape Architect.
  - Landscape drawings show engineering information for design purposes only. Do not construct engineering works from these drawings.

**Oak Valley Long Term Care**  
4 Campbell Drive, Uxbridge, ON  
File No.:

Project Information

Seal



Scale: As Shown Do not scale drawings

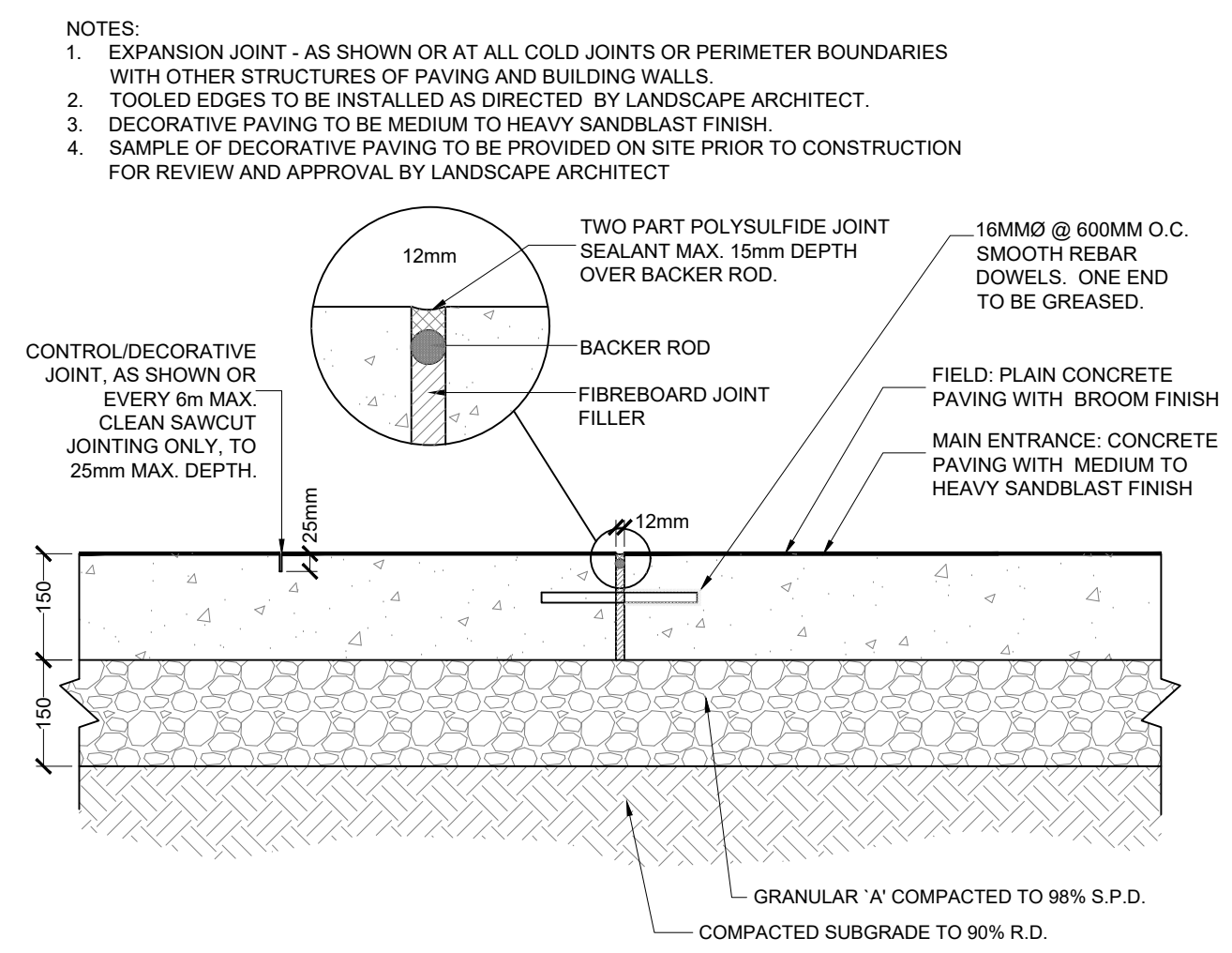
Project No. 25007 Checked By: MC  
Date: 2025.02.05 Drawn By: RH

**Planting Details**

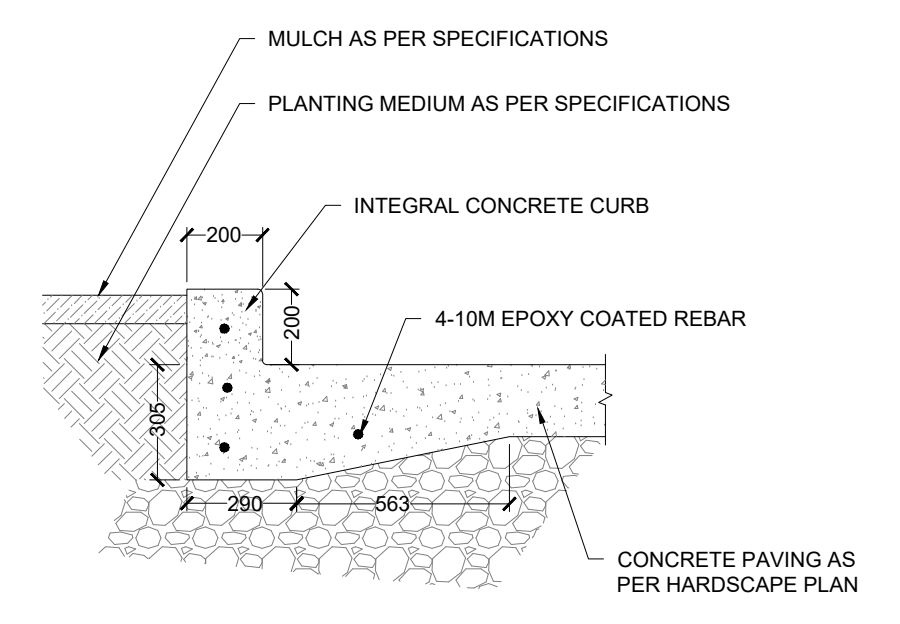
Drawing Name

**LP200**

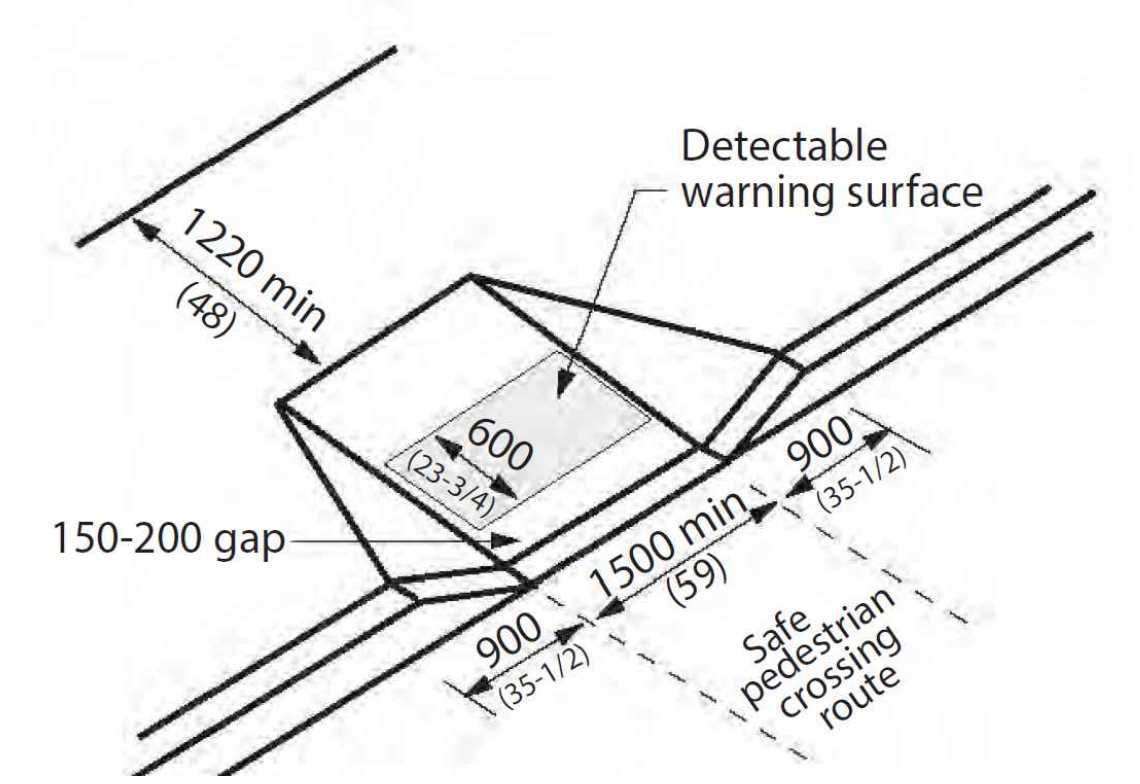
Drawing No.



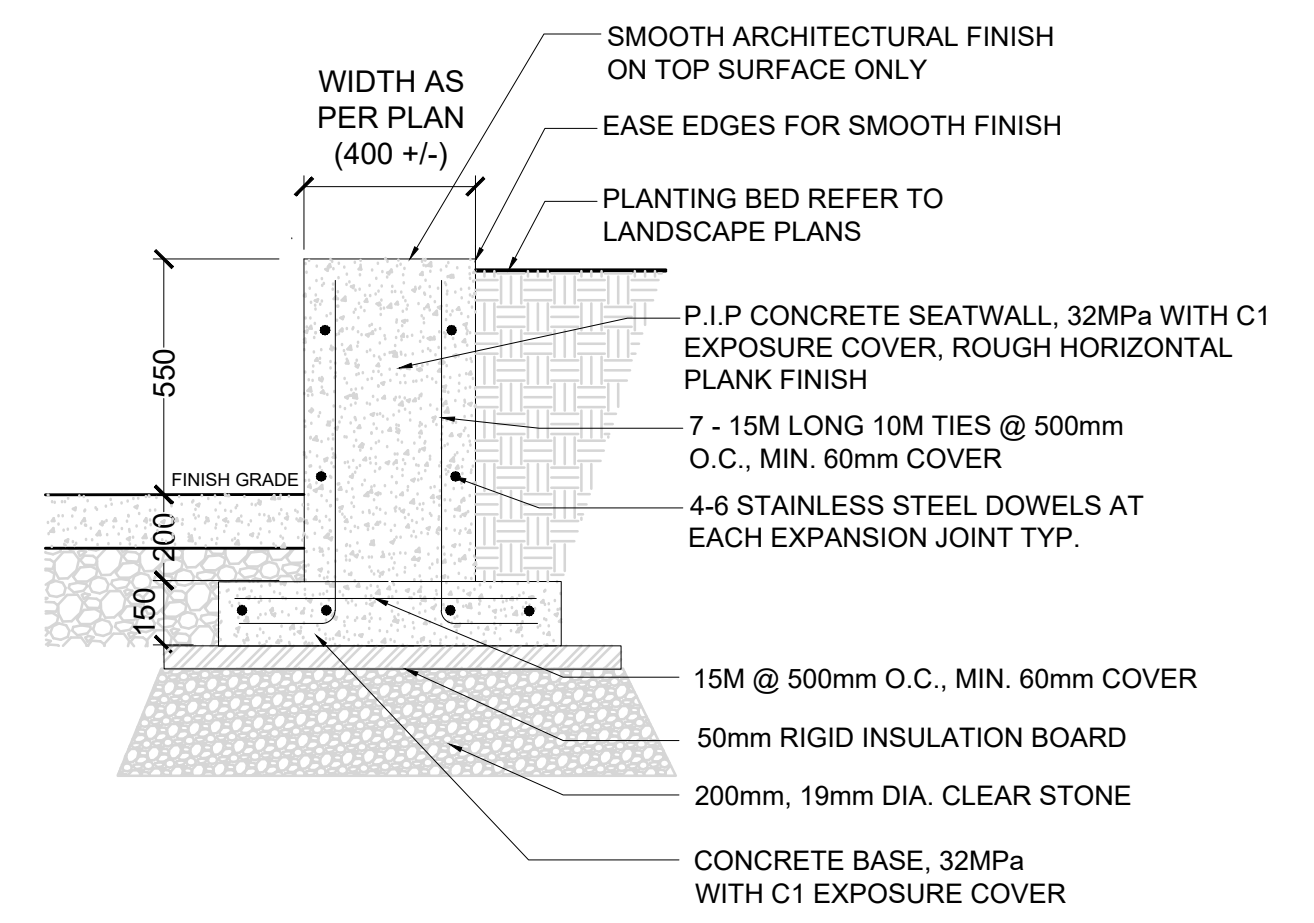
1 CONCRETE PAVING  
N.T.S.



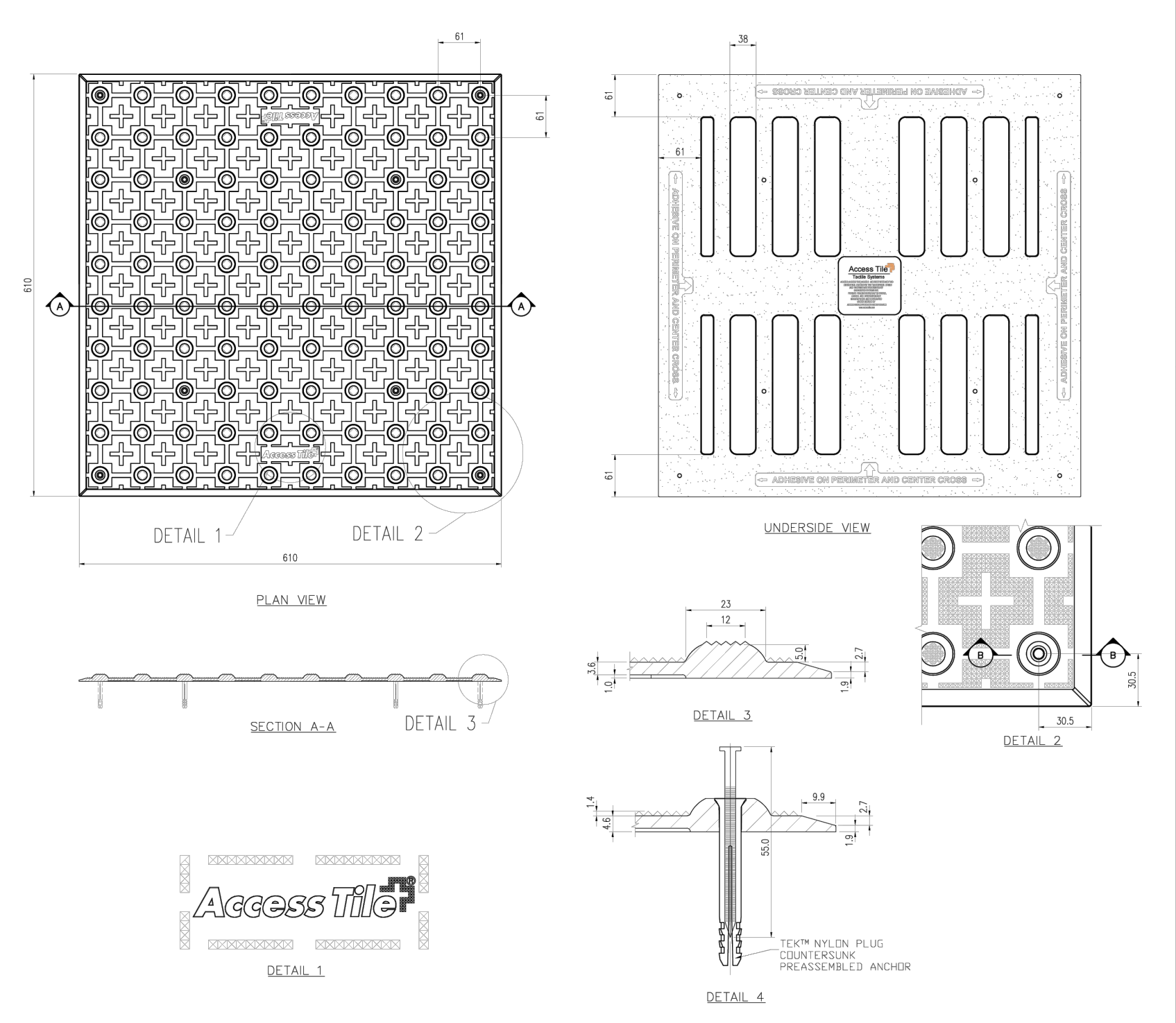
2 CONCRETE PLANTER CURB  
N.T.S.



3 CURB RAMP - TOWN STANDARD  
N.T.S.



4 CONCRETE SEAT WALL  
N.T.S.



5 TACTILE PLATE  
N.T.S.

**KINESIK**  
ENGINEERED PRODUCTS  
www.kinesik.co

ACCESS TILE: ACCESS + AND THE TWO AND THREE DIMENSIONAL DESIGN. THE CORNER ARE PATENTED IN THE USA, CANADA AND INTERNATIONALLY. DISTRIBUTED UNDER LICENSE BY KINESIK ENGINEERED PRODUCTS.

© KINNETHE E. SENELEY

ITEM	DESCRIPTION	PART NO.	QTY
1	ACCESS TILE	ACC-S-2424	1
2	1/2" ANCHOR	ADA-FAST 8	
3	TACTILE BOND AND SEAL	TSS-010	1 kg

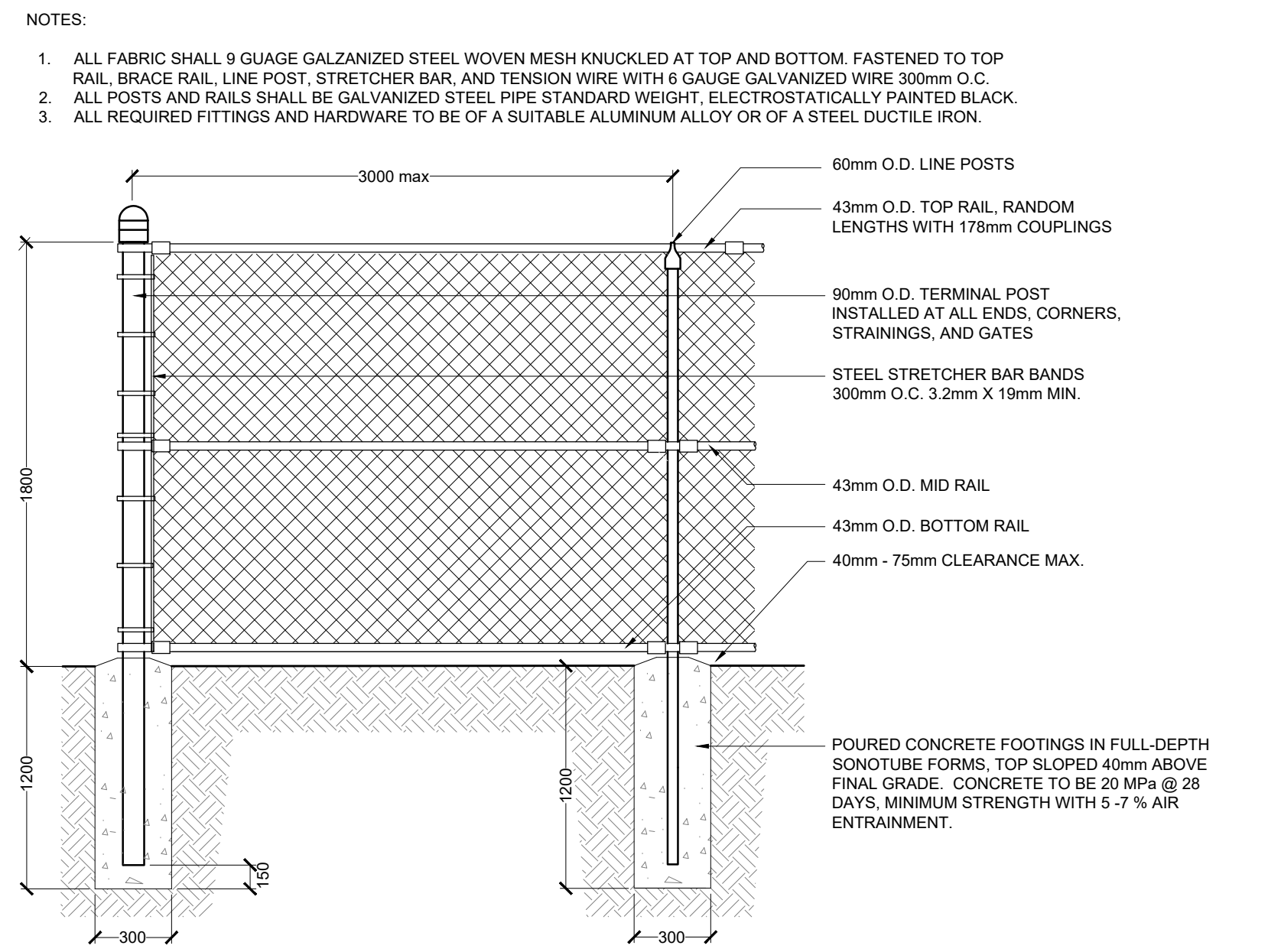
NOTE: ANCHORS ARE WELDED AND ASSEMBLED ON FILE.

DWG. NO.	REFERENCE DIMENSIONS	DESCRIPTION

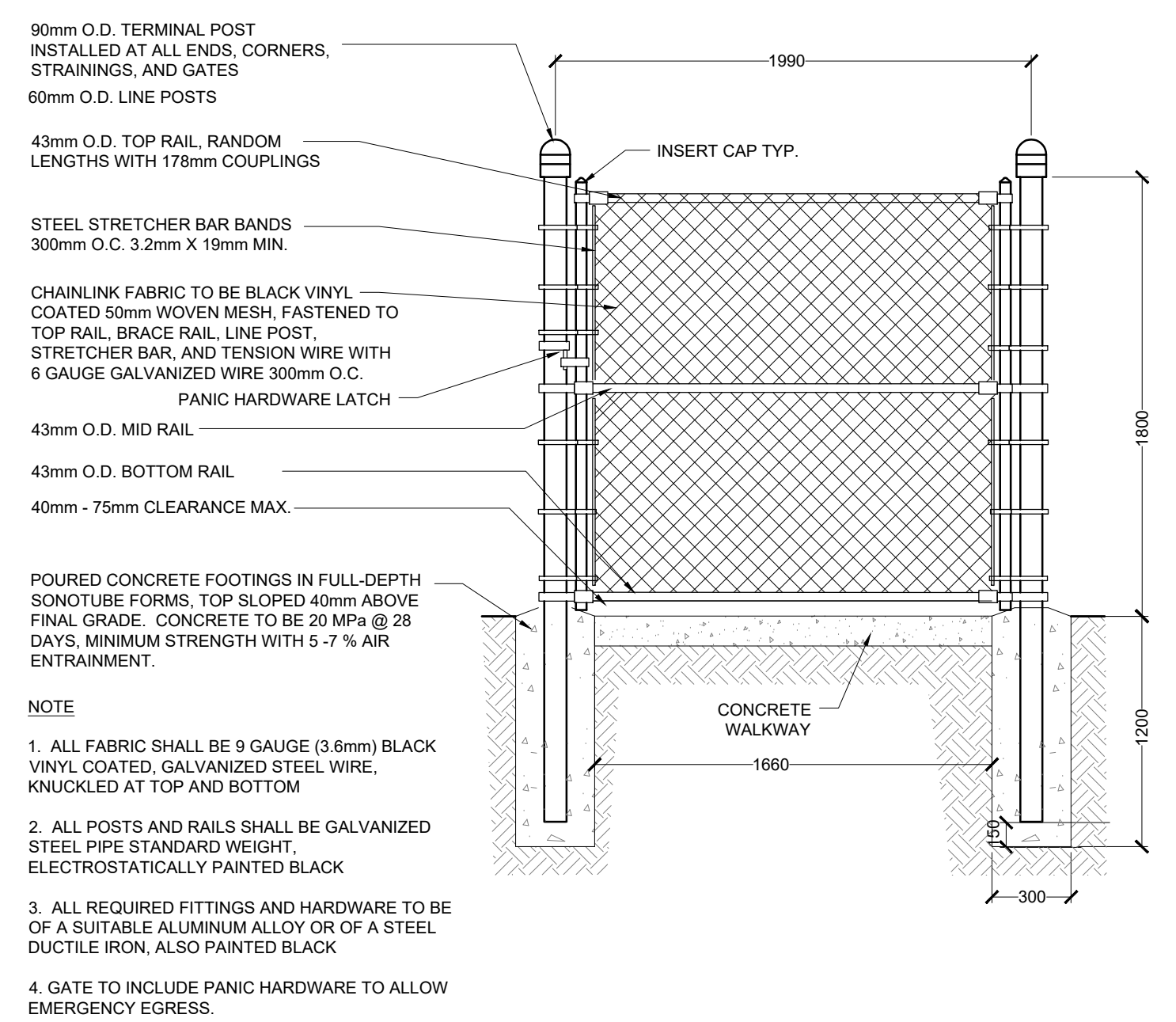
DATE: N.T.S. DESIGNED: HES DATE: 08/19/2024 DRAWN: M.S. CHECKED: J.M.P. DWG. E.O.L. PROJECT MANAGER: TRICE INC. PART NO.: ACC-S-2424 GENERAL: POLYMER COMPOSITE MATERIAL: TRUNCATED DOME, TACTILE WALKING SURFACE INDICATOR TILE.

Access Tile  
TRUNCATED DOME, TACTILE WALKING SURFACE INDICATOR 810 x 810 SURFACE APPLIED. INLINE DOME TILE DRAWING.

DWG. NO.: ACC-S-2424 REV. NO.: 0



6 1.8m HIGH CHAIN LINK FENCE  
1:25



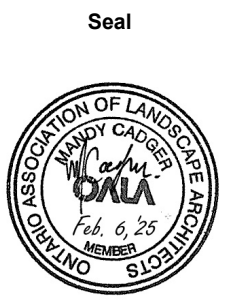
7 1.8m HIGH CHAIN LINK GATE  
1:25

NOT FOR CONSTRUCTION

**General Notes**  
1. Contractor shall report any discrepancies between the drawings and site conditions prior to commencement of the work.  
2. All utility locates are the responsibility of the Contractor. Hand dig within the limits recommended by the Service Utility Provider. Utility conflicts with proposed tree locations must be reported immediately to the Landscape Architect.  
3. Landscape drawings show engineering information for design purposes only. Do not construct engineering works from these drawings.

**Oak Valley Long Term Care**  
4 Campbell Drive, Uxbridge, ON  
File No.:

Project Information



Scale: As Shown Do not scale drawings

Project No. 25007 Checked By: MC  
Date: 2025.02.05 Drawn By: RH

**Landscape Details**

Drawing Name

**LP210**

Drawing No.

Issued	Date	Description	By
	2025.02.06	Issued for Site Plan Approval	MC

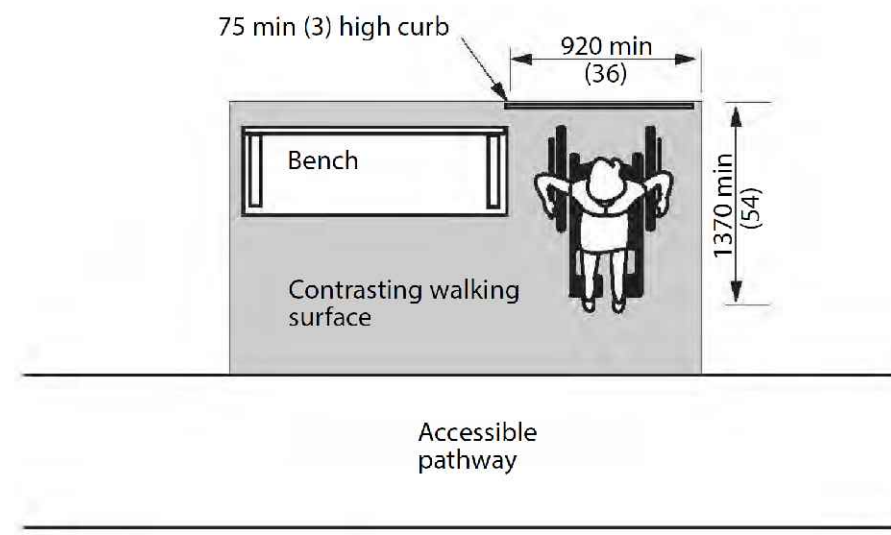
**Dundas Bench With Envirowood Slats**  
PS-605-AL-WD2-WD2-A

Our 'Dundas' bench features a cast-aluminum, powdercoated frame with 'Envirowood' slats. Shown here with our 'Bronze' powdercoat finish, and 'Walnut' envirowood slats. Available in a variety of sizes and finishes, freestanding or bolt-down.

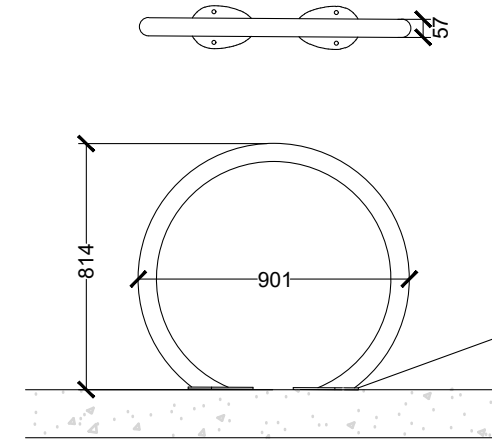


Width: 72" (182.9 cm)  
Depth: 30.5" (77.5 cm)  
Height: 31.5" (80.0 cm)  
Seat Height: 16" (40.6 cm)  
Weight: 165.0 lb (74.9 kg)

- NOTES:**
1. ALL DIMENSIONS ARE IN MILLIMETERS UNLESS OTHERWISE NOTED.
  2. ALL PRODUCT ORDERS ARE TO BE REVIEWED AND APPROVED BY THE LANDSCAPE ARCHITECT PRIOR TO ORDERING.
  3. MATERIALS/ COLOURS: POWDERCOAT STEEL, FRAMES TO BE GUNMETAL; SLAT MATERIAL TBD.
  4. INSTALLATION: INSTALL ONTO CONCRETE PAD (AT GRADE) OR CONCRETE FOOTING (ON ROOF) PER MANUFACTURER'S INSTRUCTIONS WITH CORROSION AND VANDAL RESISTANT ANCHOR BOLTS.
  5. MANUFACTURER: MAGLIN; address: 3-468 Innovation Way, Woodstock, Ontario, N4V 0B8; sales contact: Jeff Roddick; tel: 1-800-716-5506 ext. 1232; email: jeff.roddick@maglin.com
  6. MODEL TYPE: MBE-0970-00024
  7. REFER TO LANDSCAPE DRAWINGS FOR LAYOUT & QUANTITIES.



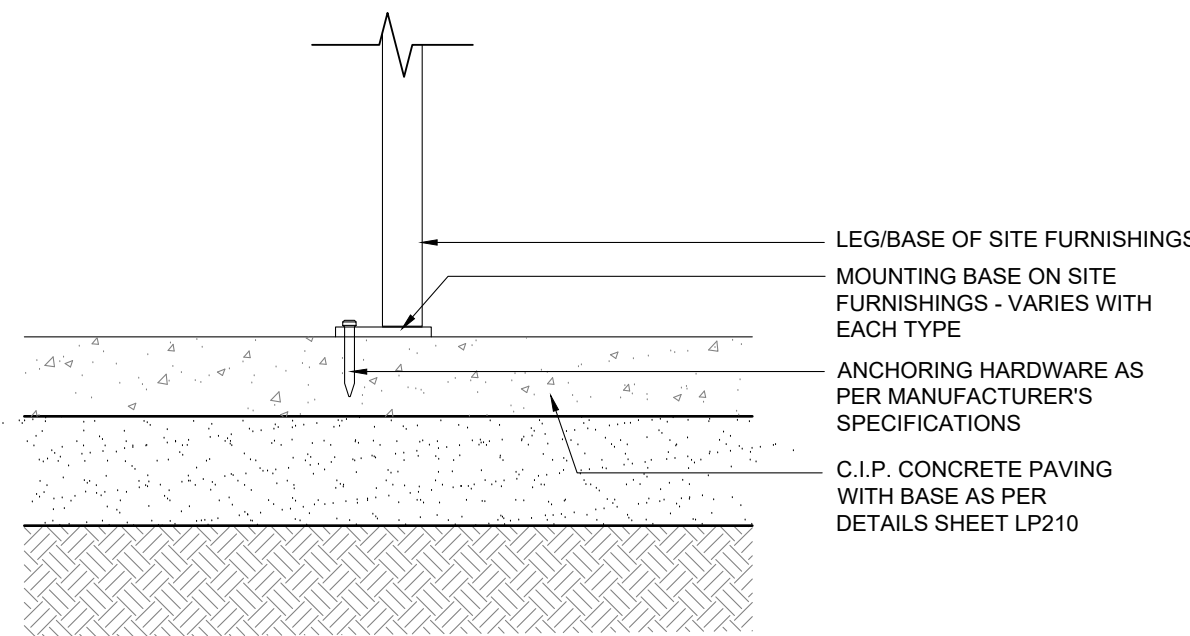
**1 SURFACE MOUNT BENCH**  
N.T.S.



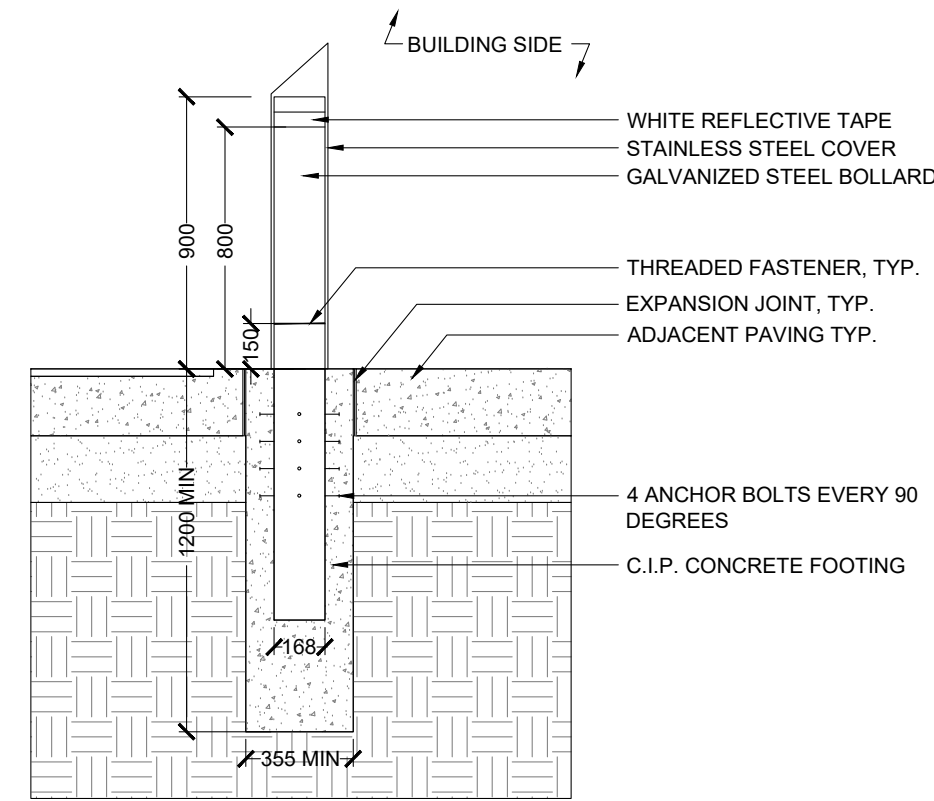
- NOTES:**
1. ALL DIMENSIONS ARE IN MILLIMETERS UNLESS OTHERWISE NOTED.
  2. ALL FURNITURE LOCATIONS TO BE STAKED OUT AND/OR APPROVED BY THE LANDSCAPE ARCHITECT PRIOR TO INSTALLATION.
  3. BIKE RACK TO BE BLACK POWDER COATED FINISH, SURFACE MOUNTED AS PER MANUFACTURER'S SPECIFICATIONS.

**2 BIKE RACK**  
N.T.S.

- NOTES:**
1. ALL FASTENERS TO BE CORROSION RESISTANT WITH APPROPRIATE SPACERS BETWEEN DISSIMILAR METALS.
  2. PRODUCT AVAILABLE FROM ONTARIO BOLLARDS.



**3 SURFACE MOUNT FOR SITE FURNISHING**  
N.T.S.



**4 BOLLARD**  
N.T.S.

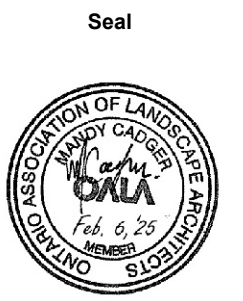
**NOT FOR CONSTRUCTION**

- General Notes**
1. Contractor shall report any discrepancies between the drawings and site conditions prior to commencement of the work.
  2. All utility locates are the responsibility of the Contractor. Hand dig within the limits recommended by the Service Utility Provider. Utility conflicts with proposed tree locations must be reported immediately to the Landscape Architect.
  3. Landscape drawings show engineering information for design purposes only. Do not construct engineering works from these drawings.

**Oak Valley Long Term Care**

4 Campbell Drive, Uxbridge, ON  
File No.:

Project Information



Scale: As Shown Do not scale drawings

Project No. 25007 Checked By: MC  
Date: 2025.02.05 Drawn By: RH

**Landscape Details**

Drawing Name

**LP220**

Drawing No.